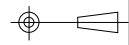


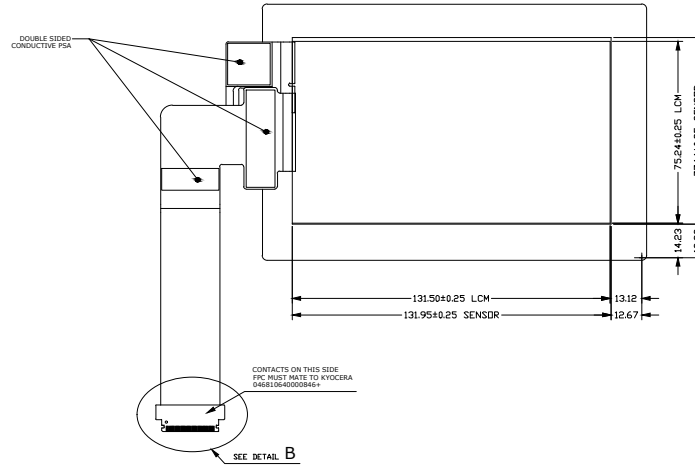
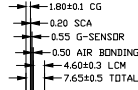
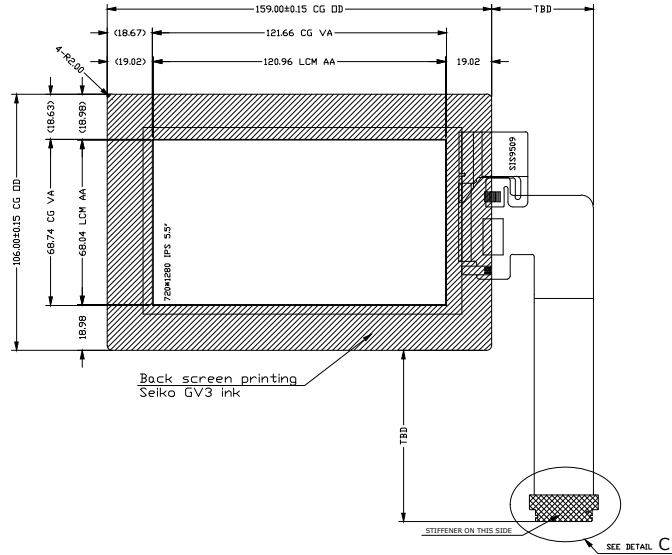
第三视角



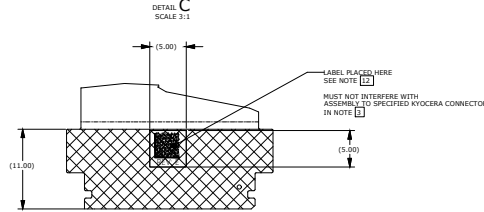
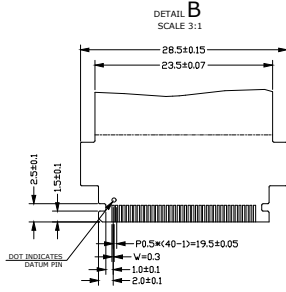
REF	DATE	DESCRIPTION
	2021/11/08	

LCM PIN DEFINE

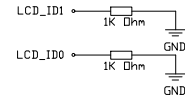
Pin	Symbol
1	LCDDI1
2	LCDDI0
3	GND
4	GND
5	INT_N
6	TP_RST_N
7	TPVDD
8	SDA
9	GND
10	SCL
11	GND
12	GND
13	DP0
14	DN0
15	GND
16	DP1
17	DN1
18	GND
19	CKP
20	CKN
21	GND
22	DP2
23	DN2
24	GND
25	DP3
26	DN3
27	GND
28	GND
29	TE
30	Reset_N
31	VCI
32	VCI
33	VCI
34	VCI
35	GND
36	LEDA
37	LEDA
38	GND
39	LEDK1
40	LEDK2



0.30  
0.30 FIBER STIFFENER THICKNESS TO INTERFACE WITH KYOCERA CONNECTOR. REFERENCE KYOCERA DATASHEET. SEE NOTES



BACKLIGHT CIRCUIT DIAGRAM 30mA/String (14LED)  
LED Part No.: JT.CB314BB-B (only BIN codes 6-1, 6-2, 7-1, or 7-2 may be used)



DISPLAY TYPE:	5.5 HD IPS TFT NORMALLY BLACK TRANSMISSIVE
RESOLUTION:	720 (RGB) *1280
DRIVER IC:	IL19881C-0D
VIEWING ANGLE (U/D/L/R)	80/80/80/80
LCM BRIGHTNESS:	600cd/m <sup>2</sup> Typ. (x=0.30±0.03, y=0.32±0.03)
HOMOGENEITY:	80% MIN
BLICKLIGHT:	14pcs, 7S2P 60mA (30mA/String)
INTERFACE:	MIP1 VIDEO MODE
OPERATING TEMP:	-20°C ~ 70 °C
STORAGE TEMP:	-30°C ~ 80 °C

CTP Spec.		CTP IIC	
1	产品结构类型 Structure	Class/Glass	Chemically
2	COVER LENS钢化类型 Strengthening	化学钢化	
3	COVER LENS表面硬度 Surface Hardness	>2H	
4	无油雾处理光源 Transmission	>98%	
5	工作温度 Operation temperature	-20°C ~ 70°C	
6	储存温度 Storage temperature	-30°C ~ 80°C	

CTP IIC	
PIN	
1	GND
2	INT
3	RST
4	VDD
5	SDA
6	SCL
7	GND

UNLESS SPECIFIED TOLERANCES ARE:	
0 - 2:	±0.05
> 2 - 10:	±0.08
> 10 - 50:	±0.10
> 50 - 100:	±0.15
> 100 - 200:	±0.20
> 200 - 400:	±0.30
ANGLES: ±0.5°	
DIMENSIONS ARE IN MM	

**XINLI** 浙江新力光电科技有限公司  
Zhejiang XinLi Optoelectronics Technology Co., Ltd

MODULE NO.: TCXD055MBLMT-76

SCALE NTS UNIT mm

TITLE	LCM OUTLINE DIMENSION		PREPARED
D/N	TCXD055MBLMT-76	PAGE 1/1	CHECK
VER:	A	REV: 0	APPROVED

DATE	
DATE	
DATE	