



晶采光電科技股份有限公司  
AMPIRE CO., LTD.

## SPECIFICATIONS FOR LCD MODULE

<b>CUSTOMER</b>	
<b>CUSTOMER PART NO.</b>	
<b>AMPIRE PART NO.</b>	<b>AM-640480VWTZQW-T01H</b>
<b>APPROVED BY</b>	
<b>DATE</b>	

☐ Preliminary Specification

☒ Formal Specification

**AMPIRE CO., LTD.**

**4F., No.116, Sec. 1, Xintai 5th Rd., Xizhi Dist., New Taipei  
City221, Taiwan (R.O.C.)**

**新北市汐止區新台五路一段 116 號 4 樓(東方科學園區 A 棟)**

**TEL:886-2-26967269 , FAX:886-2-26967196 or 26967270**

Approved by	Checked by	Organized by
Kokai	Jessica	Simon

This Specification is subject to change without notice.

Revision Date	Page	Contents	Editor
2021/10/08	--	New Release	Simon



### 3 Absolute Maximum Ratings

#### 3.1 Electrical Absolute max. ratings

Item	Symbol	Condition	Min.	Max.	Unit	Remark
Power voltage	VCC	GND=0	-0.3	3.96	V	
Logic Input Voltage Range	VIN	GND=0	-0.3	VCC +0.3	V	Note(1)

Note(1) HD, VD, DENA, DCLK, R0~R5, G0~G5, B0~B5.

Note(2) The following are maximum values which, if exceeded, may cause operation or damage to the unit.

#### 3.2 Environmental Absolute Maximum Ratings

Item	Operating		Storage		Remark
	Min.	Max.	Min.	Max.	
Temperature	-20	70	-30	80	Note(2),(3), (4),(5),(6),(7)
Humidity	Note(1)		Note(1)		
Corrosive Gas	Not Acceptable		Not Acceptable		

Note(1) Ambient temperature Temp.  $\leq 60^{\circ}\text{C}$  : 90% RH max

Note(2) For storage condition Ta at  $-30^{\circ}\text{C}$  < 240h , at  $80^{\circ}\text{C}$  < 240h

Note(3) For operating condition Ta at  $-20^{\circ}\text{C}$  < 100h , at  $70^{\circ}\text{C}$  < 240h

Note(4) Background color changes slightly depending on ambient temperature. This phenomenon is reversible.

Note(5) The response time will be slower at low temperature.

Note(6) Only operation is guaranteed at operating temperature. Contrast, response time, another display quality are evaluated at  $+25^{\circ}\text{C}$

Note(7) When LCM panel is operated over  $60^{\circ}\text{C}$  ( center of the panel surface temperature), the IAK of the LED back-light should be adjusted to 105 mA

Note(8) This is center of the panel surface temperature, not ambient temperature.

Note(9) At  $25^{\circ}\text{C}$

## 4 Optical Characteristics

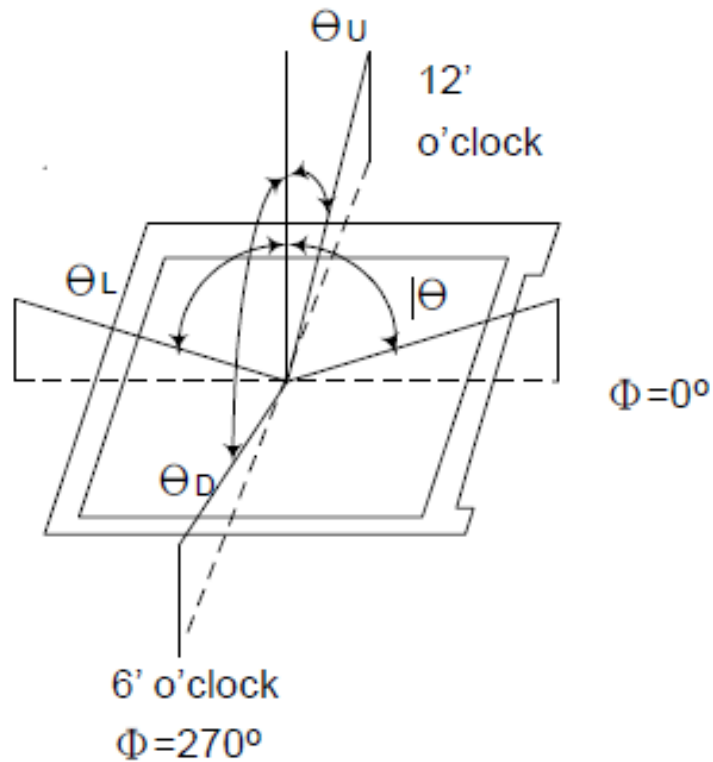
Item		Symbol	Condition	Min.	Typ.	Max.	Unit	Note
Viewing Angle	Hor.	$\theta$ U	$CR \geq 10$	75	85	--	deg.	(1),(4)
		$\theta$ D		75	85	--		
	Ver.	$\theta$ L		75	85	--		
		$\theta$ R		75	85	--		
Contrast ratio		CR	$\Theta = \Phi = 0^\circ$	800	1200	--	--	(1),(2)
Response Time		$T_R + T_F$	$\Theta = \Phi = 0^\circ$	--	30	45	msec	(1),(3)
NTSC		(%)		55	60	--	%	
Color chromaticity	Red	R <sub>x</sub>	$\Theta = \Phi = 0^\circ$	Typ. -0.05	0.630	Typ. +0.05	--	(1),(4),(5)
		R <sub>y</sub>			0.312			
	Green	G <sub>x</sub>			0.278			
		G <sub>y</sub>			0.583			
	Blue	B <sub>x</sub>			0.147			
		B <sub>y</sub>			0.115			
	White	W <sub>x</sub>			0.312			
		W <sub>y</sub>			0.356			
Luminance (IAK=140mA)		L	$\Theta = \Phi = 0^\circ$	340	425	--	cd/m <sup>2</sup>	(1),(6)
Luminance Uniformity		$\Delta L$	$\Theta = \Phi = 0^\circ$	70	-	-	%	(7)

### Measuring Condition

Ta=25°C. To be measured on the center area of panel after 10 minutes operation. LED Back-light IAK=140 mA.

- Measuring surrounding : Dark room
- Ambient temperature : 25±2°C
- 15min. Warm-up time.

### Note(1) Definition of Viewing Angle

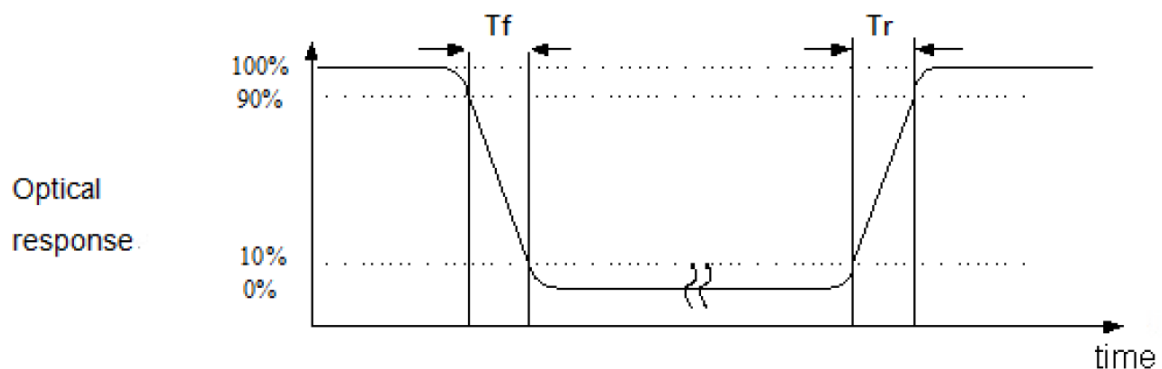


Note(2) Definition of Contrast Ratio (CR) :

Contrast ratio is calculated with the following formula.

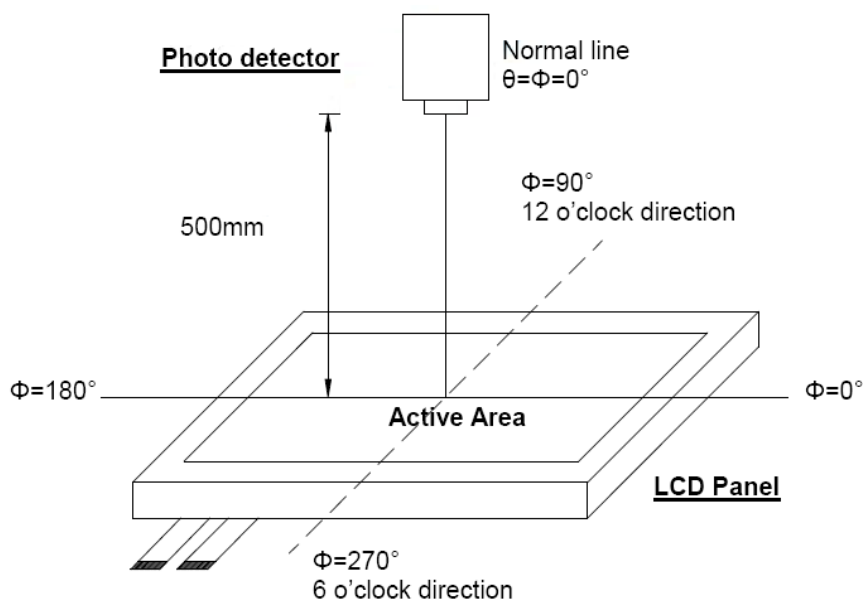
$$\text{Contrast ratio (CR)} = \frac{\text{Photo detector output when LCD is at "White" state}}{\text{Photo detector Output when LCD is at "Black" state}}$$

Note(3) Definition of Response Time : Sum of TR and TF



Note(4) Definition of optical measurement setup

The optical characteristics should be measured in dark room. After 30 minutes operation, the optical properties are measured at the center point of the LCD screen. (Response time is measured by Photo detector TOPCON BM-7, other items are measured by BM-5A/Field of view:  $1^\circ$  / Height: 500mm.)

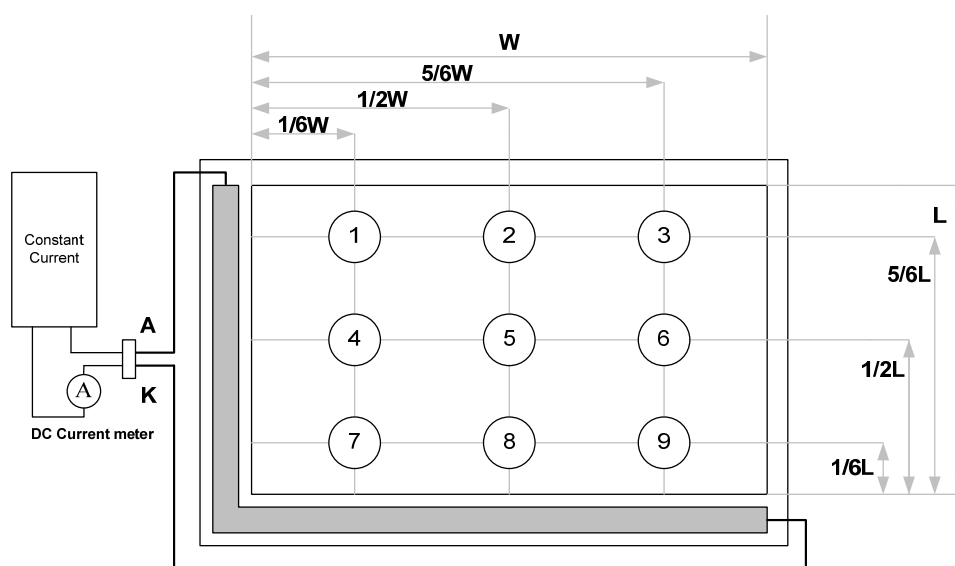


Note(5) Definition of color chromaticity (CIE1931)

Color coordinated measured at center point of LCD.

All input terminals LCD panel must be ground when measuring the center area of the panel.

Note(6) Luminance is measured at point 5 of the display.



Note(7) Definition of Luminance Uniformity

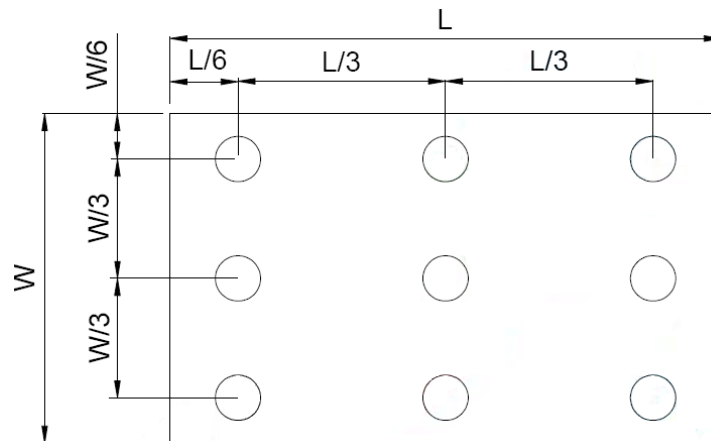
Active area is divided into 9 measuring areas (Refer to bellow figure).

Every measuring point is placed at the center of each measuring area.

$$\text{Luminance Uniformity (Yu)} = \frac{B_{\min}}{B_{\max}}$$

L ----- Active area length

W ----- Active area width



$B_{\max}$ : The measured maximum luminance of all measurement position.

$B_{\min}$ : The measured minimum luminance of all measurement position.



## 5 Electrical Characteristics

### 5.1 DC Characteristics

Item		Symbol	Min.	Typ.	Max.	Unit	Note
Power supply voltage		VCC	3.0	--	3.6	V	
Input voltage for logic	H Level	$V_{IH}$	0.7* VCC	--	VCC	V	(1)
	L Level	$V_{IL}$	GND	--	0.3* VCC	V	

Note(1) HD, VD, DENA, DCLK, and R0~R7, G0~G7, B0~B7, DISP.

Note(2)  $f_V = 60\text{Hz}$  ,  $T_a = 25^\circ\text{C}$  , Display pattern : All White.

Note(3) \*:Will be reference only

## 5.2 Electrical Characteristic Of LED Backlight

Item	Symbol	Min.	Typ.	Max.	Unit	Note
LED Forward Voltage	VAK	7.8	8.2	10.5	V	IAK=140mA, Ta=25°C
LED Forward Current	IAK	--	140	--	mA	Ta=25°C
LED life time			50k	-	Hrs.	IAK=140mA, Ta=25°C

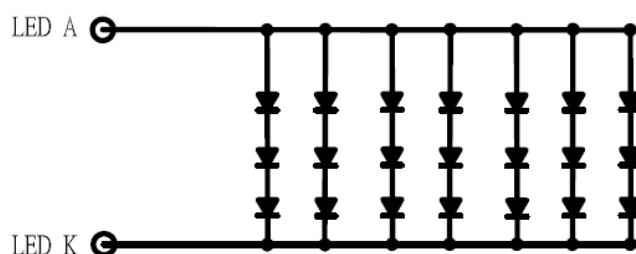
Note(1) Ta means ambient temperature of TFT-LCD module.

Note(2) If the module is driven by high current or at high ambient temperature & humidity condition. The operating life will be reduced.

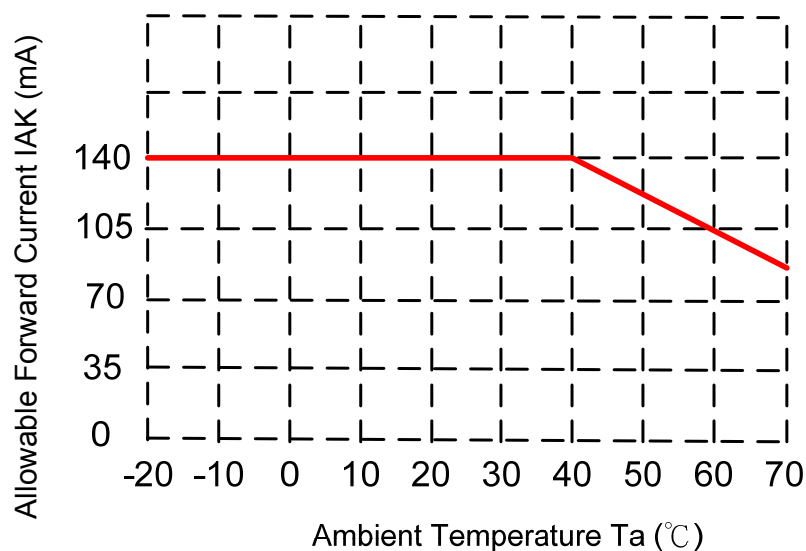
Note(3) The constant current source is needed for LED back-light driving.

Note(4) Operating life means brightness goes down to 50% minimum brightness. LED life time is estimated data. Ta=25°C

Note(5) The structure of LED B/L shows as below.



Note(6) When LCM is operated over 60°C ambient temperature, the IAK of the LED backlight should be adjusted to 105 mA max

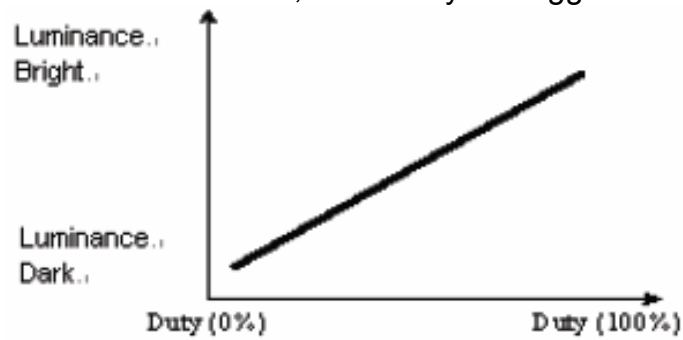


## 6 Interface Pin Assignment

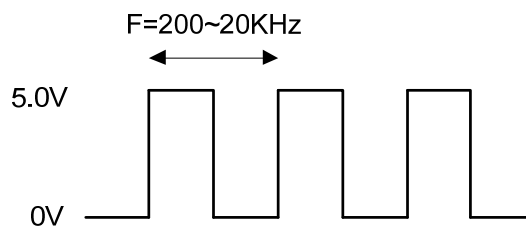
Pin No	Symbol	Function
1	U/D	Up or Down Display Control
2	(NC)	No connection
3	Hsync(NC)	Horizontal SYNC. (Sync mode used)
4	VLED	Power Supply for LED
5	VLED	Power Supply for LED
6	VLED	Power Supply for LED
7	Vcc	Power Supply for LCD
8	Vsync(NC)	Vertical SYNC. (Sync mode used)
9	DE	Data Enable
10	Vss	Power Ground
11	Vss	Power Ground
12	ADJ	Adjust for LED Brightness
13	B5	Blue Data 5 (MSB)
14	B4	Blue Data 4
15	B3	Blue Data 3
16	Vss	Power Ground
17	B2	Blue Data 2
18	B1	Blue Data 1
19	B0	Blue Data 0 (LSB)
20	Vss	Power Ground
21	G5	Green Data 5 (MSB)
22	G4	Green Data 4
23	G3	Green Data 3
24	Vss	Power Ground
25	G2	Green Data 2
26	G1	Green Data 1
27	G0	Green Data 0 (LSB)
28	Vss	Power Ground
29	R5	Red Data 5 (MSB)
30	R4	Red Data 4
31	R3	Red Data 3
32	Vss	Power Ground
33	R2	Red Data 2
34	R1	Red Data 1
35	R0	Red Data 0 (LSB)
36	Vss	Power Ground
37	Vss	Power Ground
38	DCLK	Clock Signals
39	Vss	Power Ground
40	L/R	Left or Right Display Control

NOTE :

1. ADJ adjust brightness to control Pin , Pulse duty the bigger the brighter.



2. ADJ signal = 0 ~ 5.0V , operation frequency : 200Hz~20KHz



3. VSS Pin must ground contact , can not be floating.

4. U/D and L/R are controlled function

L/R	U/D	Function
1	0	Normally display
0	0	Left and Right opposite
1	1	Up and Down opposite
0	1	Left and Right opposite , Up and Down opposite

## 7 Interface Timing

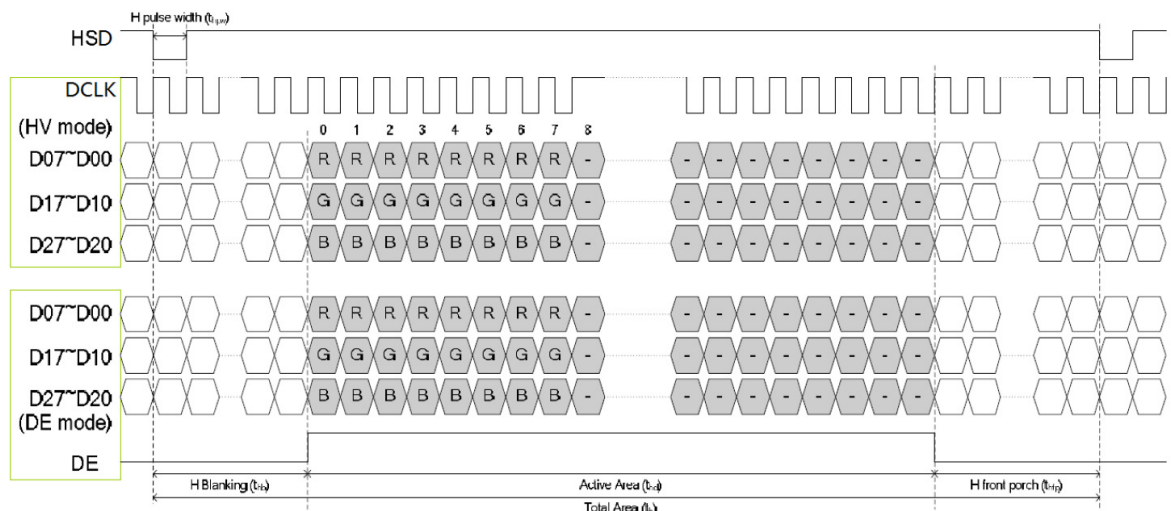
### AC electrical characteristics

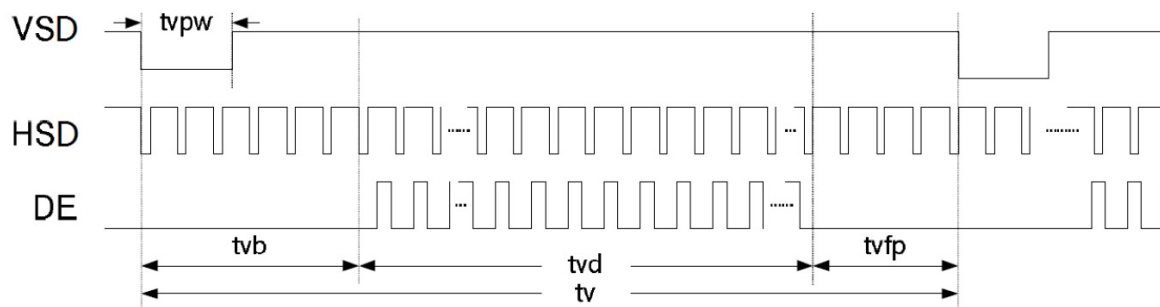
Parameter Symbol		SPEC			Unit
		Min	Typ	Max	
HSD setup time	T <sub>hst</sub>	8	-	-	ns
HSD hold time	T <sub>hhd</sub>	8	-	-	ns
VSD setup time	T <sub>vst</sub>	8	-	-	ns
VSD hold time	T <sub>vhd</sub>	8	-	-	ns
Data setup time	T <sub>dsu</sub>	8	-	-	ns
Data hold time	T <sub>dhd</sub>	8	-	-	ns
DE setup time	T <sub>esu</sub>	8	-	-	ns
DE hold time	T <sub>ehd</sub>	8	-	-	ns
VDD Power On Slew rate	T <sub>POR</sub>	-	-	20	ms
RSTB pulse width	T <sub>Rst</sub>	10	-	-	us
CLKIN cycle time	T <sub>cph</sub>	20	-	-	ns
CLKIN pulse duty	T <sub>cwh</sub>	40	50	60	%
Output stable time	T <sub>sst</sub>	-	-	6	us

### Timing for RGB Interface

VDD=3.3V, VSS=0V, Ta=25°C

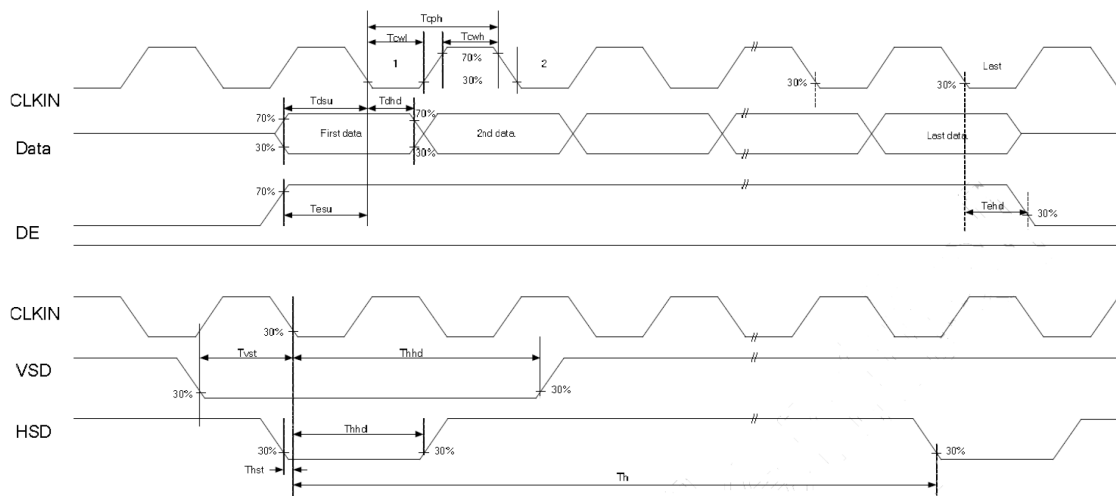
Parameter	Symbol	Min	Typ	Max	Unit	Remark
DCLK frequency	fclk	--	24	50	MHz	
Horizontal display area	thd	640			DCLK	
One Horizontal Line	th	--	760	--	DCLK	
HSD pulse width	thpw	1	48	255	DCLK	
HSD Back Porch(blanking)	thb	88			DCLK	
HSD Front Porch	thfp	1	32	255	DCLK	
DE Mode Blanking	th-thd	85	120	512	DCLK	
Vertical display area	tvd	480			TH	
VSD period time	tv	513	525	767	TH	
VSD pulse width	tvpw	3	3	255		
VSD Back Porch(blanking)	tvb	32			TH	
VSD Front Porch	tvfp	1	13	255	TH	
DE Mode Blanking	tv-tvd	4	45	255	TH	





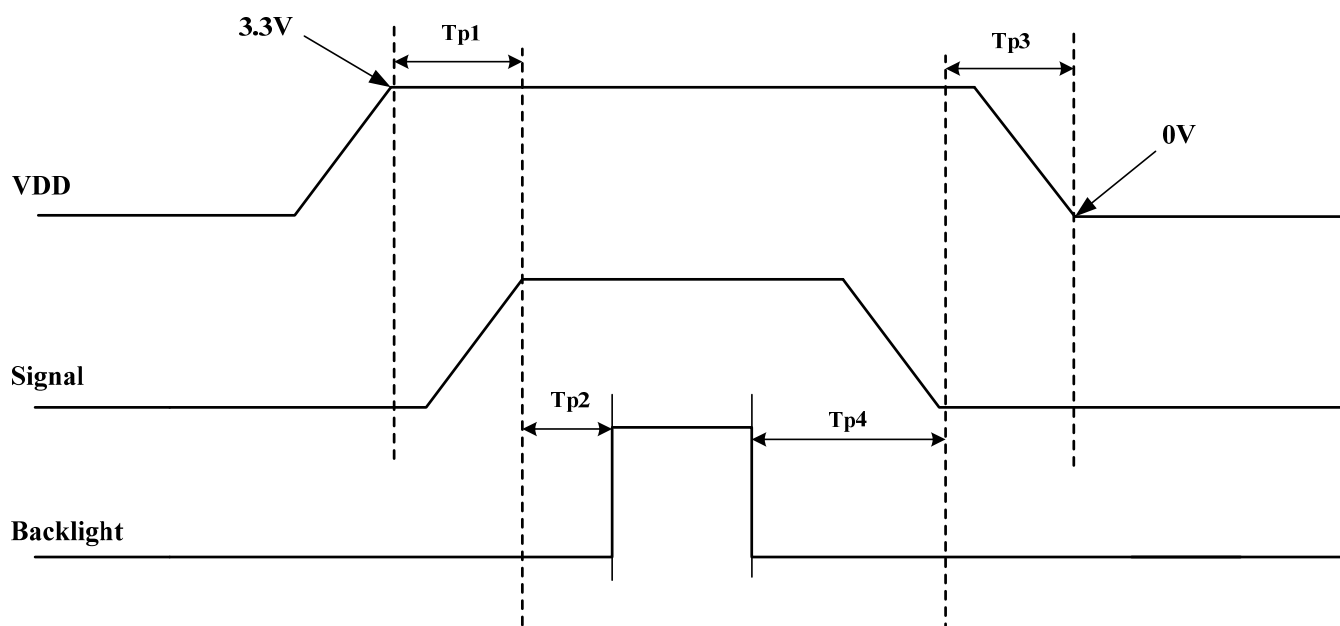
**Input Clock and Data timing Diagram**

Parameter	Symbol	Min.	Typ.	Max.	Unit	Conditions
CLKIN Frequency	Fclk	-	40	50	MHz	VDD=3.0V~3.6V
CLKIN Cycle Time	Tclk	20	25	-	ns	-
CLKIN Pulse Duty	Tcwh	40	50	60	%	Tclk
Time from HSD to Source Output	Thso		64		CLKIN	-
Time from HSD to LD	Thld		64		CLKIN	-
Time from HSD to STV	Thstv		2		CLKIN	-
Time from HSD to CKV	Thckv		20		CLKIN	-
Time from HSD to OEV	Thoev		4		CLKIN	-
LD Pulse Width	Twld		10		CLKIN	-
CKV Pulse Width	Twckv		66		CLKIN	-
OEV Pulse Width	Twoev		74		CLKIN	-



**Input Clock and Data Timing Diagram**

## Power On/Off Sequence



Item	Symbol	Value			Units	Remark
		Min.	Typ.	Max.		
VDD on to signal starting	Tp1	5	-	50	ms	
Signal starting to backlight on	Tp2	150	-	-	ms	
Signal off to VDD off	Tp3	5	-	50	ms	
Backlight off to signal off	Tp4	150	-	-	ms	

## 8. Displayed Color and Input Data

### Data Signal

COLOR		INPUT DATA																											
		R DATA								G DATA								B DATA											
		R7	R6	R5	R4	R3	R2	R1	R0	G7	G6	G5	G4	G3	G2	G1	G0	B7	B6	B5	B4	B3	B2	B1	B0				
MSB								LSB		MSB								LSB		MSB								LSB	
BASIC COLOR	BLACK	0	0	0	0	0	0	0	0	0	0	0	0	0	0	0	0	0	0	0	0	0	0	0	0				
	RED(255)	1	1	1	1	1	1	1	1	0	0	0	0	0	0	0	0	0	0	0	0	0	0	0	0				
	GREEN(255)	0	0	0	0	0	0	0	0	1	1	1	1	1	1	1	1	0	0	0	0	0	0	0	0				
	BLUE(255)	0	0	0	0	0	0	0	0	0	0	0	0	0	0	0	0	1	1	1	1	1	1	1	1				
	CYAN	0	0	0	0	0	0	0	0	1	1	1	1	1	1	1	1	1	1	1	1	1	1	1	1				
	MAGENTA	1	1	1	1	1	1	1	1	0	0	0	0	0	0	0	0	1	1	1	1	1	1	1	1				
	YELLOW	1	1	1	1	1	1	1	1	1	1	1	1	1	1	1	1	0	0	0	0	0	0	0	0				
	WHITE	1	1	1	1	1	1	1	1	1	1	1	1	1	1	1	1	1	1	1	1	1	1	1	1				
RED	RED(1)	0	0	0	0	0	0	0	1	0	0	0	0	0	0	0	0	0	0	0	0	0	0	0	0				
	RED(2)	0	0	0	0	0	0	1	0	0	0	0	0	0	0	0	0	0	0	0	0	0	0	0					
	RED(255)	1	1	1	1	1	1	1	1	0	0	0	0	0	0	0	0	0	0	0	0	0	0	0	0				
GREEN	GREEN(1)	0	0	0	0	0	0	0	0	0	0	0	0	0	0	0	1	0	0	0	0	0	0	0	0				
	GREEN(2)	0	0	0	0	0	0	0	0	0	0	0	0	0	0	1	0	0	0	0	0	0	0	0					
	GREEN(255)	0	0	0	0	0	0	0	0	1	1	1	1	1	1	1	1	0	0	0	0	0	0	0	0				
BLUE	BLUE(1)	0	0	0	0	0	0	0	0	0	0	0	0	0	0	0	0	0	0	0	0	0	0	1	0				
	BLUE(2)	0	0	0	0	0	0	0	0	0	0	0	0	0	0	0	0	0	0	0	0	0	1	0					
	BLUE(255)	0	0	0	0	0	0	0	0	0	0	0	0	0	0	0	0	1	1	1	1	1	1	1	1				



## 9. Projected capacitive-type touch panel

### 9.1 Basic Characteristic

ITEM	SPECIFICATION
Type	Projective Capacitive Touch Panel
Activation	5-fingers or Signal-finger
X/Y Position Reporting	Absolute Position
Touch Force	No contact pressure required
Calibration	No need for calibration
Report Rate	Approx. 100 points/sec
Interface	USB
Control IC	<a href="#">EXC80W32</a>
Note	<b>For normal operation, there must be a cover lens of 0.7~4mm thickness to be put on the top of touch panel.</b>

Specify the normal operating condition

(GND=0V)

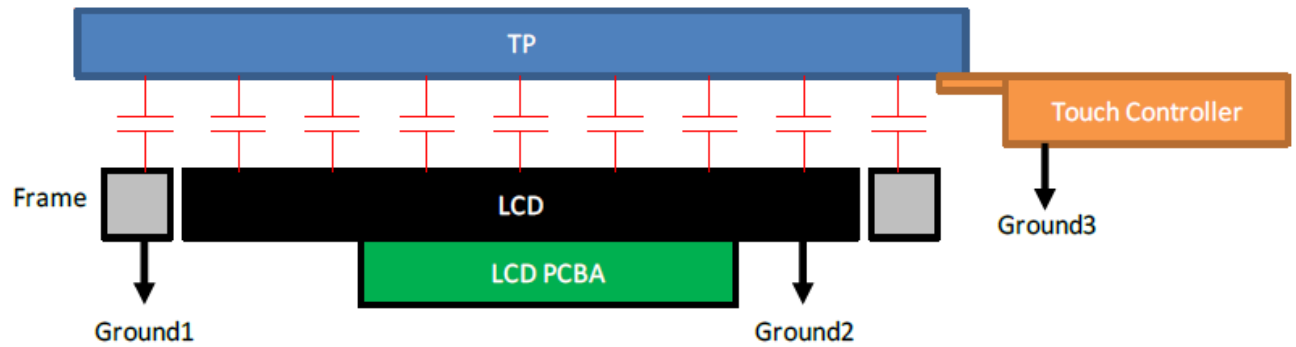
Item	Symbol	Min.	Typ.	Max.	Unit	Note
Power Supply Voltage	VCC	4.75	5.0	5.25	V	
Power Consumption	Ivcc	-	T.B.D	-	mA	

### 9.2 Interface

Pin No.	Symbol	Function
1	VCC	USB Power 5V
2	D+	USB Data+
3	D+	USB Data+
4	GND	USB Power Ground
5	D-	USB Data-
6	D-	USB Data-
7	NC	No connection
8	NC	No connection

## Grounding

TP needs to work in environment with stable stray capacitance. In order to minimize the variation in stray capacitance, all conductive mechanical parts must not be floating. Intermittent floating any conductive part around the touch sensor may cause significant stray capacitance change and abnormal touch function. It is recommended to keep all conductive parts having same electrical potential as the GND of the touch controller module.



GND1, GND2 and GND3 should be connected together to have the same ground

## 10. Reliability Test Conditions

Test Item	Test Conditions	Note
High Temperature Operation	70±3°C , t=240 hrs	
Low Temperature Operation	-20±3°C , t=240 hrs	
High Temperature Storage	80±3°C , t=240 hrs	(1),(2)
Low Temperature Storage	-30±3°C , t=240 hrs	(1),(2)
Storage Humidity Test	60 °C, Humidity 90%, 240 hrs	(1),(2)
Vibration Test (Packing)	Sweep frequency : 10 ~ 50 ~ 10 Hz/1min Amplitude : 0.75mm Test direction : X.Y.Z/3 axis Duration : 30min/each axis	(2)

Note(1) Condensation of water is not permitted on the module.

Note(2) The module should be inspired after 1 hour storage in normal conditions (15~35 °C , 45~65%RH).

Note(3) The module shouldn't be tested over one condition, and all the tests are independent.

Note(4) All reliability tests should be done without the protective film.

Definitions of life end point:

- Current drain should be smaller than the specific value.
- Function of the module should be maintained.
- Appearance and display quality should not have degraded noticeably.
- Contrast ratio should be greater than 50% of initial value.

## **11. GENERAL PRECAUTION**

### **11.1 Use Restriction**

This product is not authorized for use in life supporting systems, aircraft navigation control systems, military systems and any other application where performance failure could be life-threatening or otherwise catastrophic.

### **11.2 Disassembling or Modification**

Do not disassemble or modify the module. It may damage sensitive parts inside LCD module, and may cause scratches or dust on the display. AMPIRE does not warrant the module, if customers disassemble or modify the module.

### **11.3 Breakage of LCD Panel**

- (1) If LCD panel is broken and liquid crystal spills out, do not ingest or inhale liquid crystal, and do not contact liquid crystal with skin.
- (2) If liquid crystal contacts mouth or eyes, rinse out with water immediately.
- (3) If liquid crystal contacts skin or cloths, wash it off immediately with alcohol and rinse thoroughly with water.
- (4) Handle carefully with chips of glass that may cause injury, when the glass is broken.

### **11.4 Electric Shock**

- (1) Disconnect power supply before handling LCD module.
- (2) Do not pull or fold the LED cable.
- (3) Do not touch the parts inside LCD modules and the fluorescent LED's connector or cables in order to prevent electric shock.

### **11.5 Absolute Maximum Ratings and Power Protection Circuit**

- (1) Do not exceed the absolute maximum rating values, such as the supply voltage variation, input voltage variation, variation in parts' parameters, environmental temperature, etc., otherwise LCD module may be damaged.
- (2) Please do not leave LCD module in the environment of high humidity and high temperature for a long time.
- (3) It's recommended to employ protection circuit for power supply.

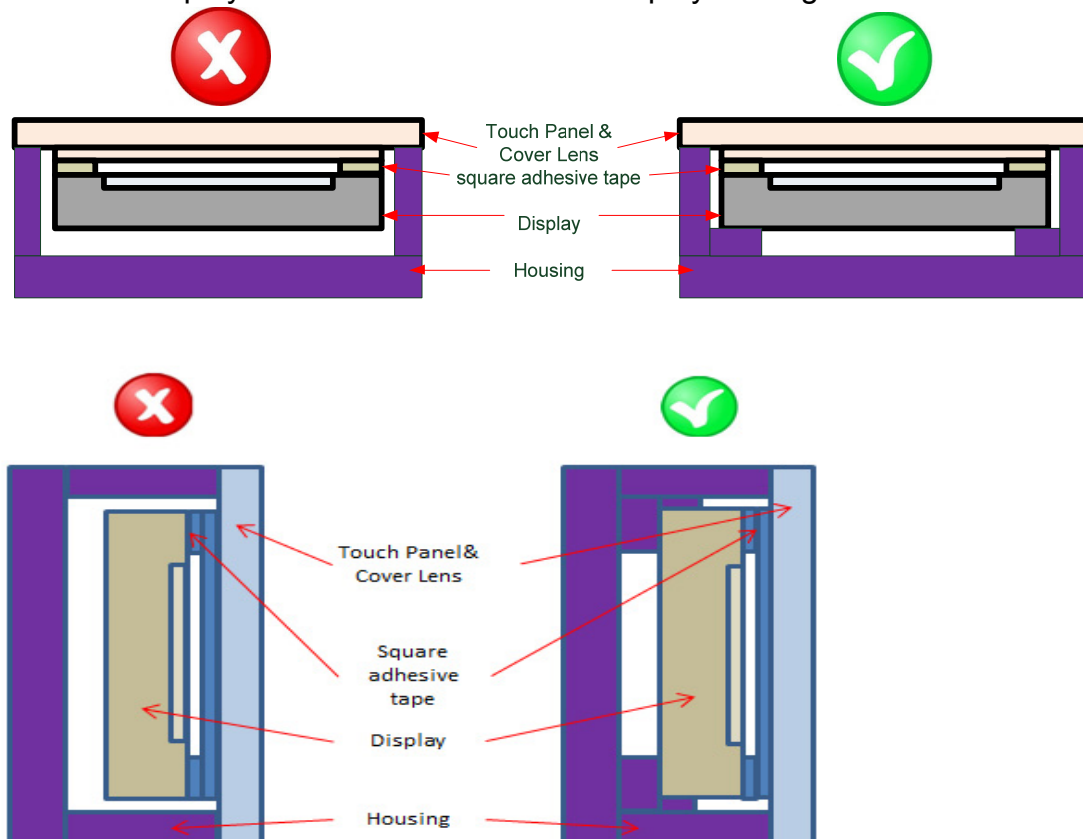
## 11.6 Operation

- (1) Do not touch, push or rub the polarizer with anything harder than HB pencil lead.
- (2) Use fingerstalls of soft gloves in order to keep clean display quality, when persons handle the LCD module for incoming inspection or assembly.
- (3) When the surface is dusty, please wipe gently with absorbent cotton or other soft material.
- (4) Wipe off saliva or water drops as soon as possible. If saliva or water drops contact with polarizer for a long time, they may cause deformation or color fading.
- (5) When cleaning the adhesives, please use absorbent cotton wetted with a little petroleum benzene or other adequate solvent.

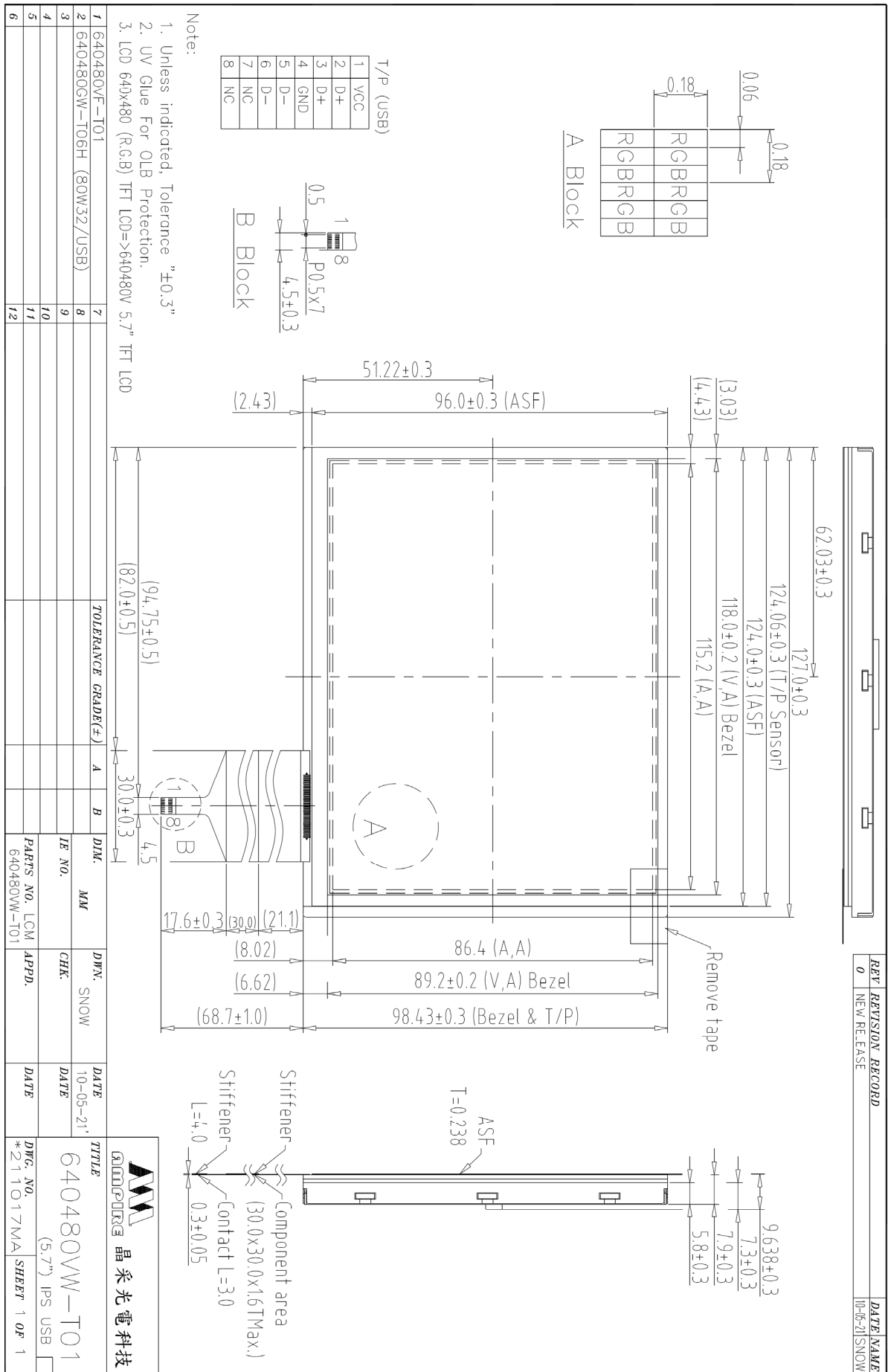
## 11.7 Mechanism

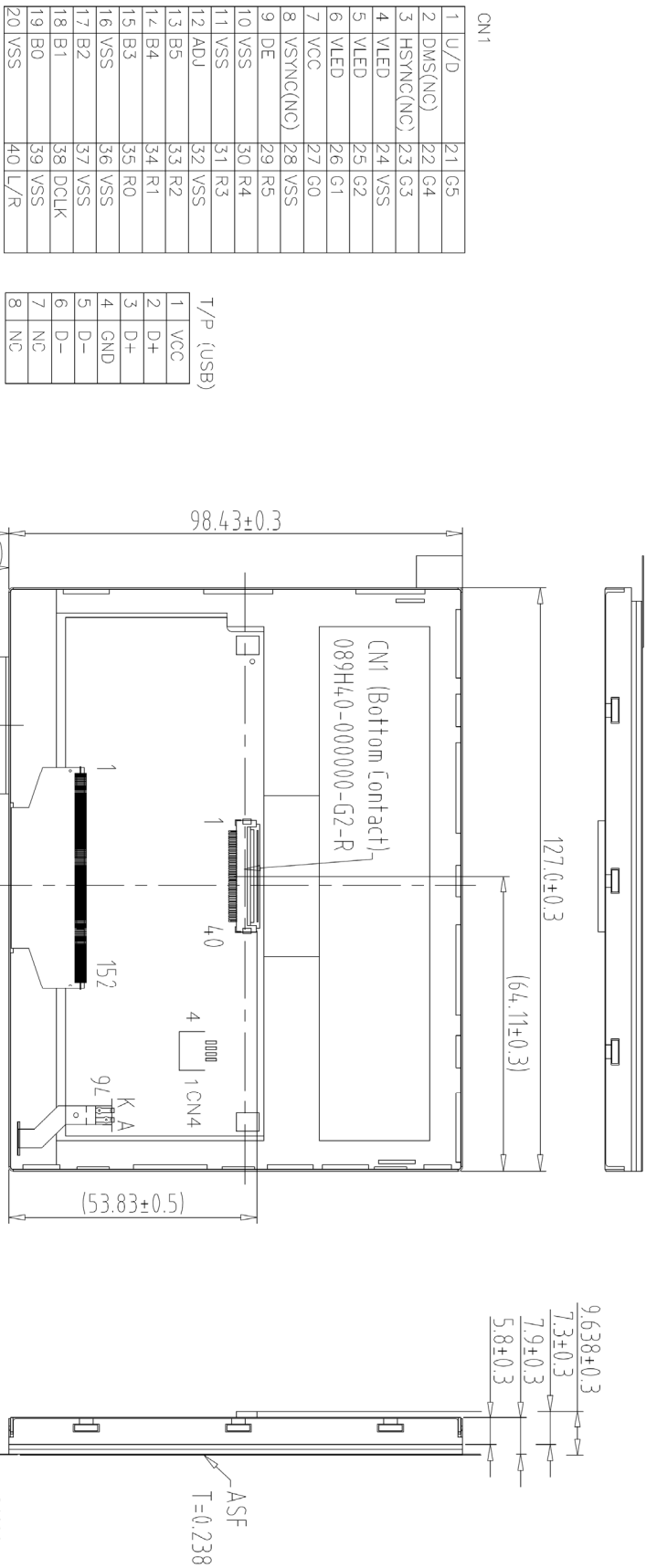
Please mount LCD module by using mounting holes arranged in four corners tightly.

The square adhesive tape which is between the touch panel and display can't provide well supporting in the long term and high ambient temperature condition. Whether upright or horizontal position the support holder which is in the back side of the display is needed. Do not let the display floating.



## 12. OUTLINE DIMENSION





Note:

1. Unless indicated, Tolerance " $\pm 0.3$ "
2. UV Glue For OLB Protection.
3. LCD 640x480 (R.G.B) TFT LCD=>640480V 5.7" TFT LCD

1	640480V-T01	2	TOLERANCE	GRADE(±)	A	B	DIM.	MM	DWN.	SNOW	DATE	DATE	TITLE	DWG. NO.	SHEET	OF
2	640480GW-T06H (80W32/USB)	8					IE NO.		CHK.		DATE	DATE	640480V-T01	(5.7") IPS USB	1	1
3		9					PARTS NO.	LCM-1	APPD.		DATE	DATE	品采光電科技			
4		10														
5		11														
6		12														