



晶采光電科技股份有限公司  
AMPIRE CO., LTD.

# Specifications for LCD module

Customer	
Customer part no.	
Ampire part no.	AM-800480N7TZQW-T30H
Approved by	
Date	

☐ Preliminary Specification

☒ Formal Specification

**AMPIRE CO., LTD.**

**4F., No.116, Sec. 1, Xintai 5th Rd., Xizhi Dist., New Taipei City 221, Taiwan (R.O.C.)**

**新北市汐止區新台五路一段 116 號 4 樓(東方科學園區 A 棟)**

**TEL:886-2-26967269 , FAX:886-2-26967196 or 26967270**

Approved by	Checked by	Organized by
<i>Patrick</i>	<i>Kokai</i>	<i>Mark</i>

This Specification is subject to change without notice.

## RECORD OF REVISION

Revision Date	Page	Contents	Editor
2020/11/25	---	New Release	Mark

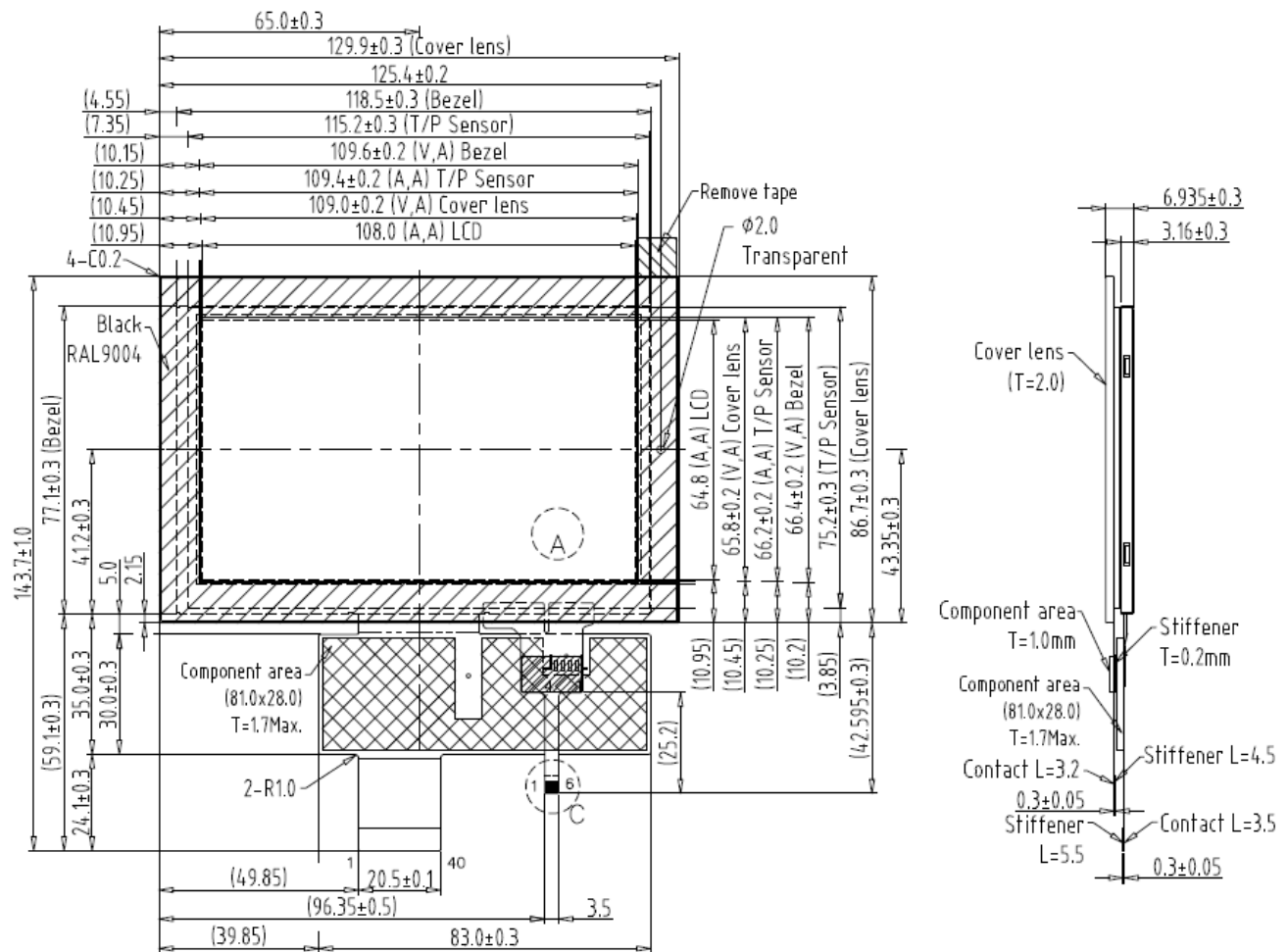
## 1. Features

5 inch Amorphous-TFT-LCD (Thin Film Transistor Liquid Crystal Display) module. This TFT LCD has a 5.0 (5:3) inch diagonally measured active display area with 800x480 (800 horizontal by 480 vertical pixels) resolution. This module is composed of a 5" TFT-LCD panel, backlight unit, and [LED driver circuit](#).

- (1) Construction: a-Si TFT-LCD with driving system, White LED Backlight.
- (2) LCD type : IPS
- (3) Number of the Colors : 16.7M colors (R,G,B 8bit digital each)
- (4) Interface : LVDS
- (5) LCD Power Supply Voltage: 3.3V single power input, built-in power supply circuit.
- (6) [Touch panel](#)
  - ✧ [IC: ILI2117A](#)
  - ✧ [Interface: I2C](#)
- (7) [Cove glass](#)
  - ✧ [Thickness: 2.0mm](#)

## 2. Physical Specifications

Item	Specifications	unit
Display size (diagonal)	5.0	inch
Resolution	800 (W) x RGB x 480 (H)	dot
Pixel pitch	0.135 (W) x 0.135 (H)	mm
Color configuration	R.G.B Vertical stripe	
Display Mode	Normally Black	



### 3. Absolute Maximum Ratings

#### 3.1 Electrical Absolute max. ratings

Item	Symbol	Condition	Min.	Max.	Unit	Remark
Power voltage	VDD	GND=0	-0.3	4.0	V	
LED Driver Power Voltage	VLED	GND=0	--	6	V	

Note(1) The following are maximum values which, if exceeded, may cause operation or damage to the unit.

#### 3.2 Environmental Absolute Maximum Ratings

Item	Operating		Storage		Remark
	Min.	Max.	Min.	Max.	
Temperature	-30	80	-30	80	Note(2),(3), (4),(5),(6),(7)
Humidity	Note(1)		Note(1)		
Corrosive Gas	Not Acceptable		Not Acceptable		

Note(1) Ambient temperature Temp.  $\leq 60^{\circ}\text{C}$  : 90% RH max

Note(2) For storage condition Ta at  $-30^{\circ}\text{C} < 240\text{h}$  , at  $80^{\circ}\text{C} < 240\text{h}$

Note(3) For operating condition Ta at  $-30^{\circ}\text{C} < 100\text{h}$  , at  $80^{\circ}\text{C} < 240\text{h}$

Note(4) Background color changes slightly depending on ambient temperature. This phenomenon is reversible.

Note(5) The response time will be slower at low temperature.

Note(6) Only operation is guaranteed at operating temperature. Contrast, response time, another display quality are evaluated at  $+25^{\circ}\text{C}$

Note(7) When LCM panel is operated over  $60^{\circ}\text{C}$  ( center of the panel surface temperature), the IAK of the LED back-light should be adjusted to 105mA

Note(8) This is center of the panel surface temperature, not ambient temperature.

Note(9) At  $25^{\circ}\text{C}$

#### 4. Optical Characteristics

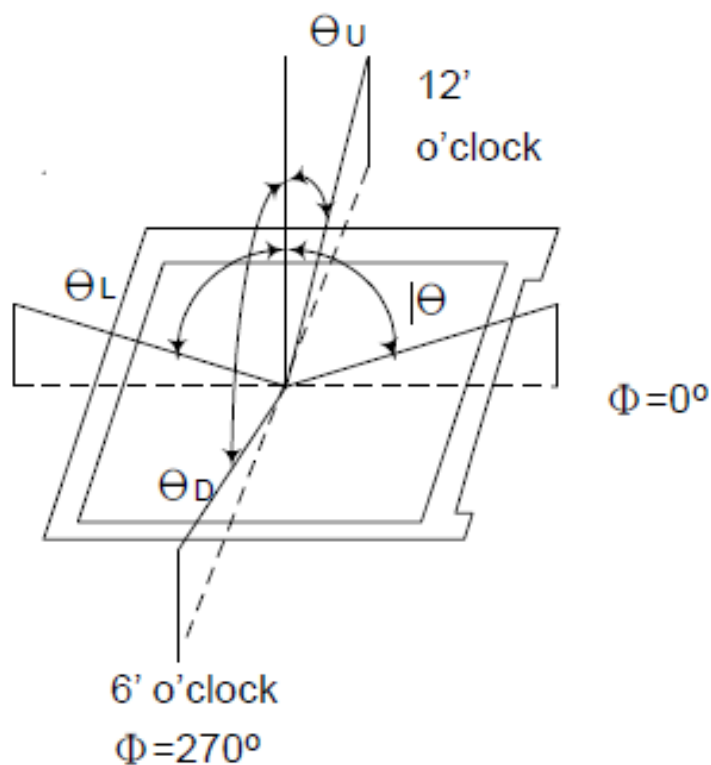
Item		Symbol	Condition	Min.	Typ.	Max.	Unit	Note
Viewing Angle	Hor.	$\theta$ U	$CR \geq 10$	75	85	--	deg.	(1),(4)
		$\theta$ D		75	85	--		
	Ver.	$\theta$ L		75	85	--		
		$\theta$ R		75	85	--		
Contrast ratio		CR	$\Theta = \Phi = 0^\circ$	800	1000	--	--	(1),(2)
Response Time		$T_R + T_F$	$\Theta = \Phi = 0^\circ$	--	30	40	msec	(1),(3)
Color Gamut		(%)		45	50	--	%	
Color chromaticity	Red	$R_x$	$\Theta = \Phi = 0^\circ$	Typ. -0.05	TBD	Typ. +0.05	--	(1),(4),(5)
		$R_y$			TBD			
	Green	$G_x$			TBD			
		$G_y$			TBD			
	Blue	$B_x$			TBD			
		$B_y$			TBD			
	White	$W_x$			0.32			
		$W_y$			0.37			
Luminance (IAK=140mA)		L	$\Theta = \Phi = 0^\circ$	340	425	--	cd/m <sup>2</sup>	(1),(6)
Luminance Uniformity		$\Delta L$	$\Theta = \Phi = 0^\circ$	70	-	-	%	(7)

#### Measuring Condition

Ta=25°C. To be measured on the center area of panel after 10 minutes operation. LED Back-light IAK=140mA.

- Measuring surrounding : Dark room
- Ambient temperature : 25±2°C
- 15min. Warm-up time.

Note(1) Definition of Viewing Angle

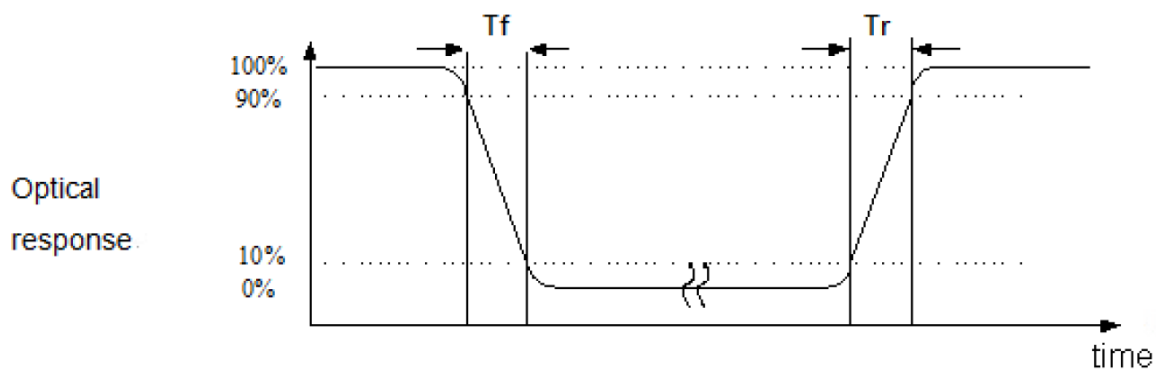


Note(2) Definition of Contrast Ratio (CR) :

Contrast ratio is calculated with the following formula.

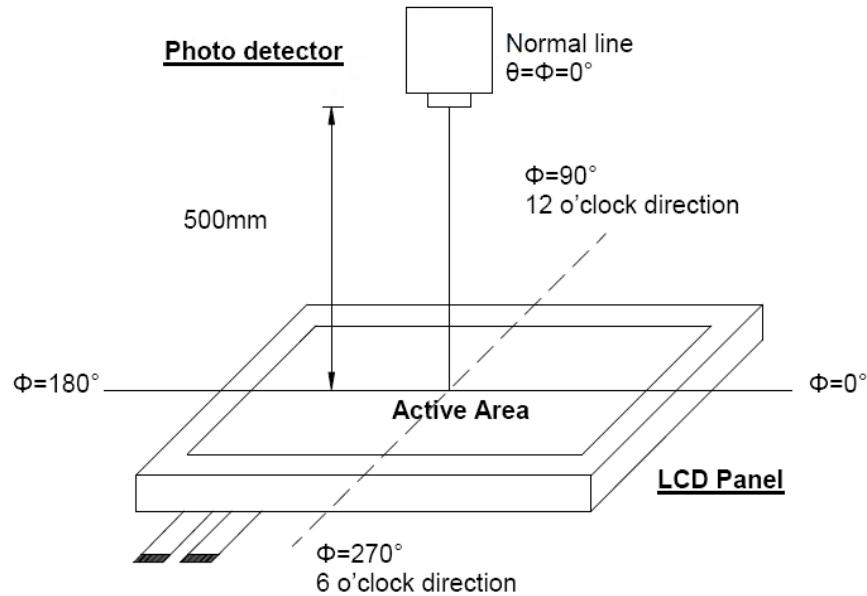
$$\text{Contrast ratio (CR)} = \frac{\text{Photo detector output when LCD is at "White" state}}{\text{Photo detector Output when LCD is at "Black" state}}$$

Note(3) Definition of Response Time : Sum of TR and TF



Note(4) Definition of optical measurement setup

The optical characteristics should be measured in dark room. After 30 minutes operation, the optical properties are measured at the center point of the LCD screen. (Response time is measured by Photo detector TOPCON BM-7, other items are measured by BM-5A/Field of view:  $1^\circ$  / Height: 500mm.)

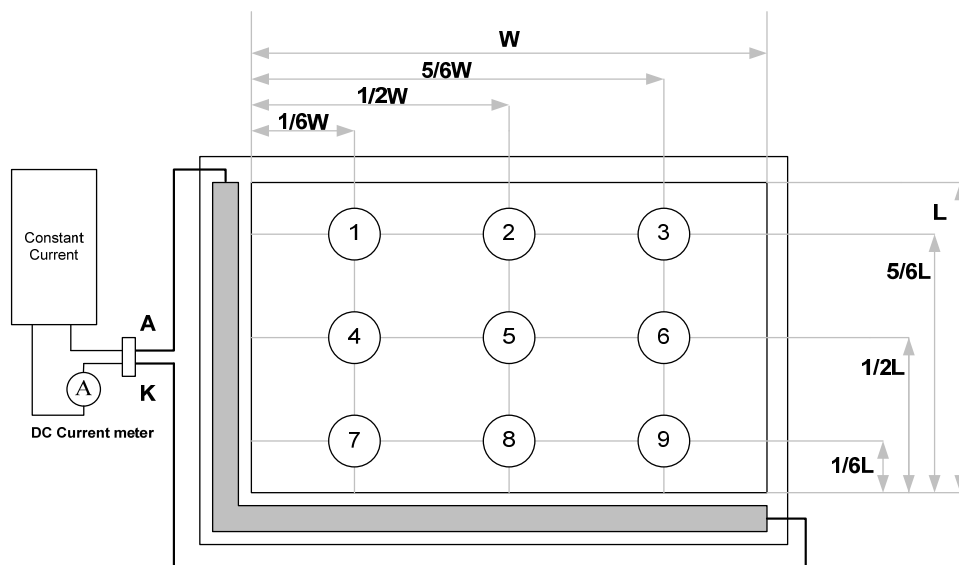


Note(5) Definition of color chromaticity (CIE1931)

Color coordinated measured at center point of LCD.

All input terminals LCD panel must be ground when measuring the center area of the panel.

Note(6) Luminance is measured at point 5 of the display.





Note(7) Definition of Luminance Uniformity

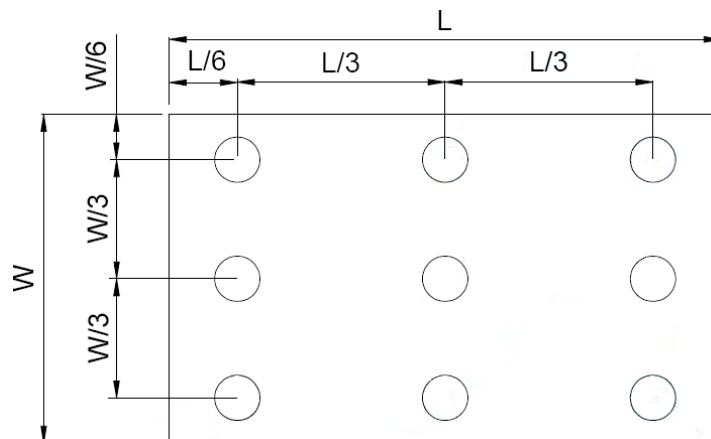
Active area is divided into 9 measuring areas (Refer to bellow figure).

Every measuring point is placed at the center of each measuring area.

$$\text{Luminance Uniformity (Yu)} = \frac{B_{\min}}{B_{\max}}$$

L ----- Active area length

W ----- Active area width



$B_{\max}$ : The measured maximum luminance of all measurement position.

$B_{\min}$ : The measured minimum luminance of all measurement position.

## 5. Electrical Characteristics

### 5.1 Electrical Characteristic Of LED Backlight

Item	Symbol	Min.	Typ.	Max.	Unit	Note
Power Voltage For VLED	VLED	--	5.0	--	V	
PWM Dimming DC active level	VDIMH	0.4	--	--	V	
	VDIML	--	--	1.4	V	
PWM Dimming Freq.	FDIM	0.1	--	50	kHz	
LED Forward Voltage	VAK	8.4	9.0	10.2	V	IAK=140mA, Ta=25°C
LED Forward Current	IAK	--	140	--	mA	Ta=25°C
LED life time			30k	-	Hrs.	IAK=140mA, Ta=25°C

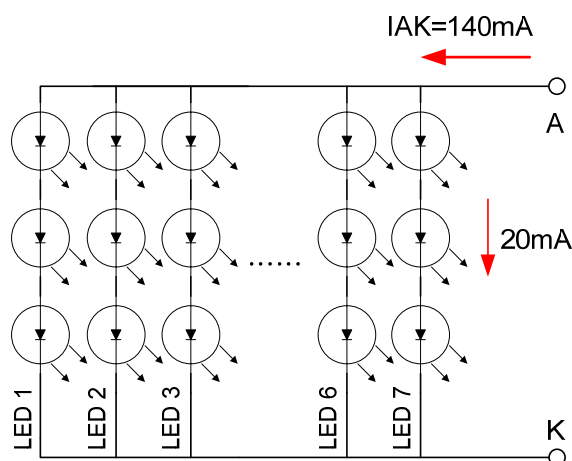
Note(1) Ta means ambient temperature of TFT-LCD module.

Note(2) If the module is driven by high current or at high ambient temperature & humidity condition. The operating life will be reduced.

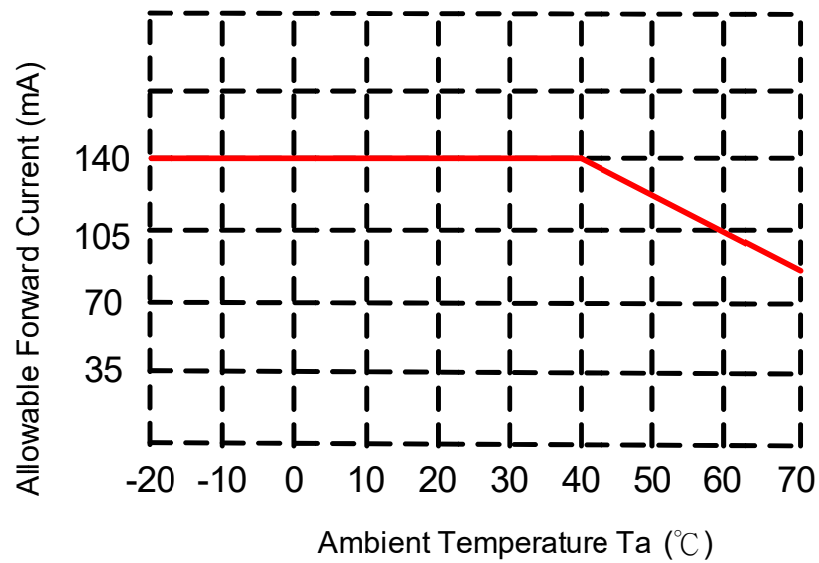
Note(3) The constant current source is needed for LED back-light driving.

Note(4) Operating life means brightness goes down to 50% minimum brightness. LED life time is estimated data. Ta=25°C

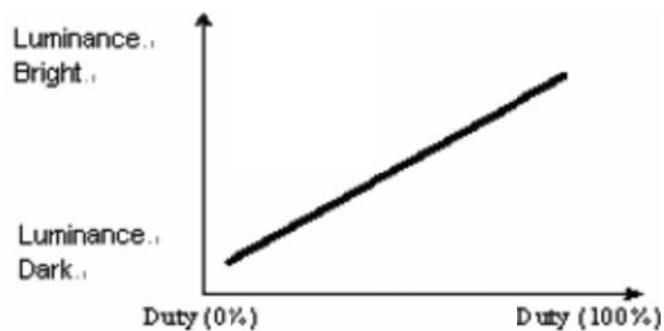
Note(5) The structure of LED B/L shows as below.



Note(6) When LCM is operated over 60°C ambient temperature, the IAK of the LED backlight should be adjusted to 105mA max



Note(7) PWM adjust brightness to control Pin, Pulse duty the bigger the brighter.



Note(8) PWM operation frequency: 100Hz~50 KHz with amplitude greater than 1.5V.

## 5.2 DC Characteristics

Item		Symbol	Min.	Typ.	Max.	Unit	Note
Power supply voltage		VDD	3.3	--	3.6	V	
Input voltage for logic	H Level	VIH	0.7* VDD	--	VDD	V	
	L Level	VIL	GND	--	0.3* VDD	V	
Power Supply current		IDD	--	80	--	mA	(1)

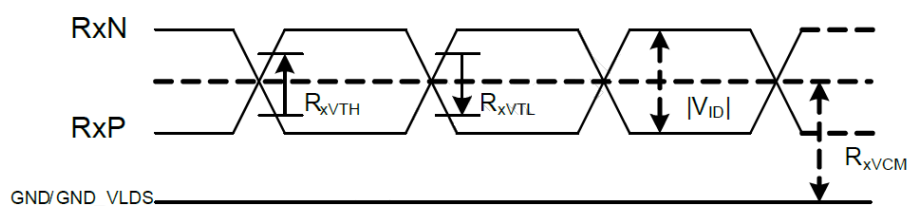
Note(1) Ta=25°C, Display pattern: All White.

Note(2) \*:Will be reference only

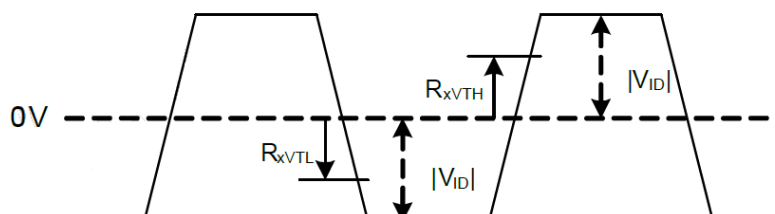
## 5.3 DC Characteristics for LVDS Receiver Circuit

Item	Symbol	Min.	Typ.	Max.	Unit	Conditions
Differential Input High Threshold Voltage	$R_{xVTH}$	-	-	0.1	V	$R_{xVCM} = 1.2V$
Differential Input Low Threshold Voltage	$R_{xVTL}$	-0.1	-	-	V	
Input Voltage Range (Singed-End)	$R_{xVIN}$	0	-	VDD-1.0	V	
Differential Input Common Mode Voltage	$R_{xVCM}$	$ V_{ID} /2$	-	$2.4 -  V_{ID} /2$	V	
Differential Input Voltage	$ V_{ID} $	0.2	-	0.6	V	

### Single End Signals



### Differential Signals

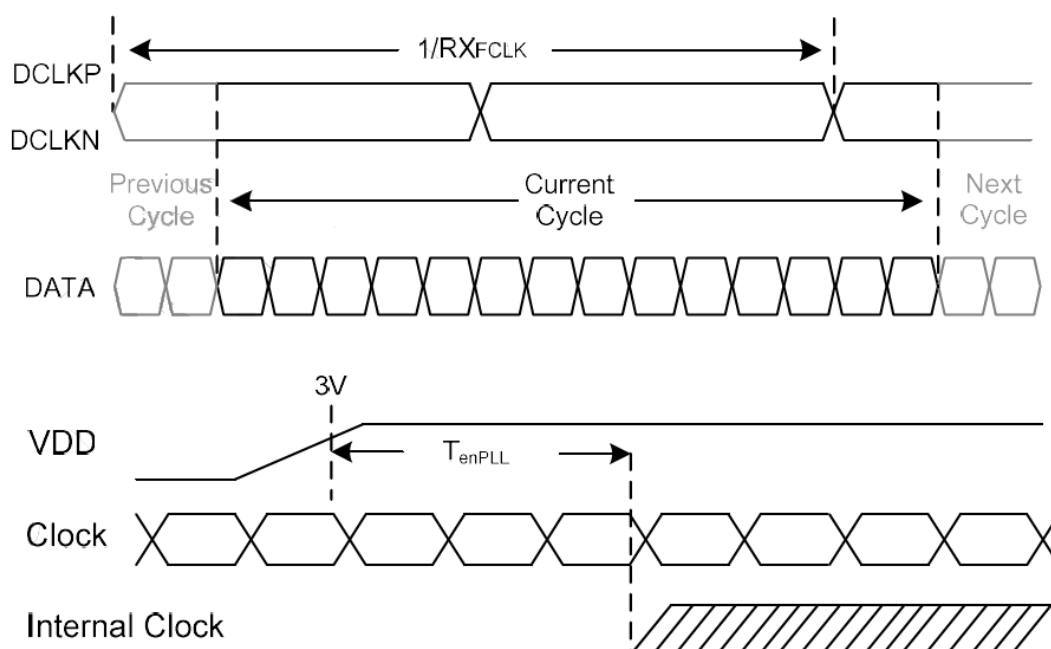


## 5.4 AC Characteristics

### LVDS Input Timing Table

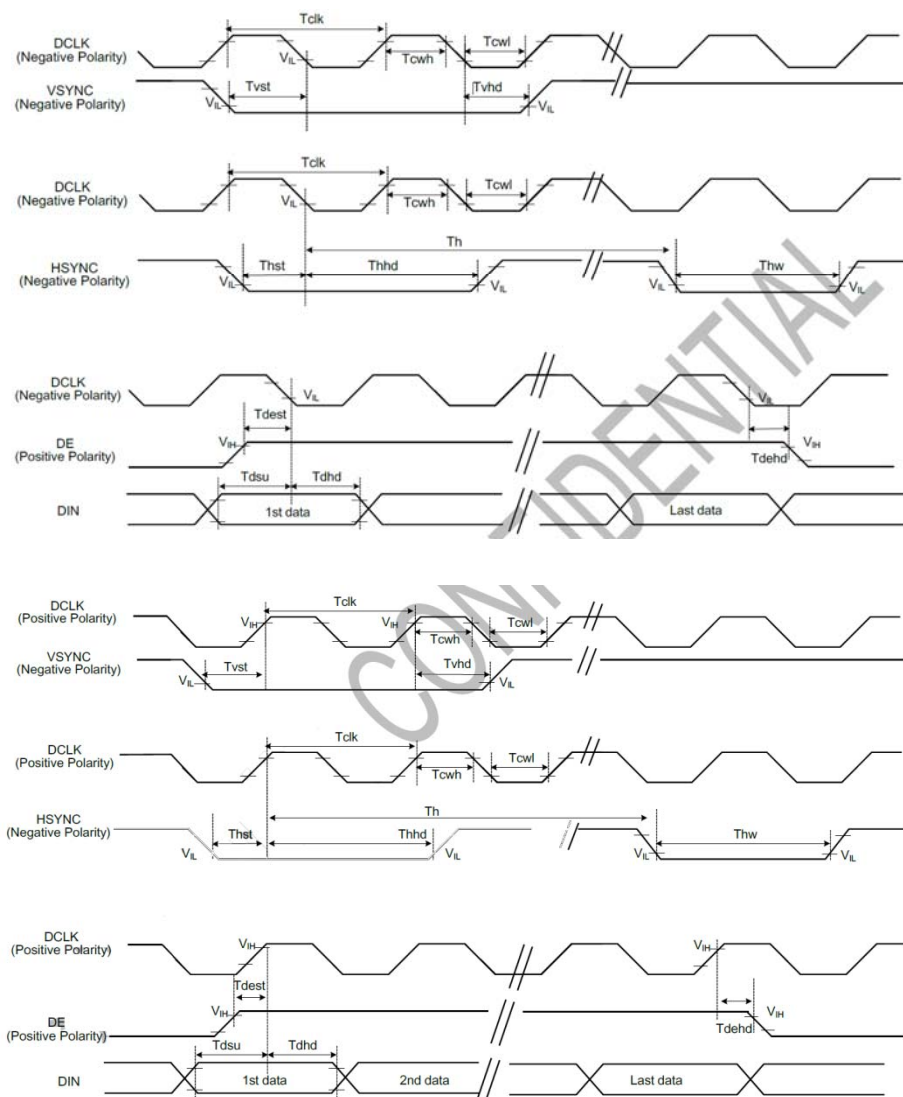
(PVDD=PVDD1=VDD=VDDI= 3.3V, AGND= 0V, TA=25°C)

Item	Symbol	Min.	Typ.	Max.	Unit	Conditions
Clock Frequency	$RX_{FCLK}$	23	25	27	MHz	
Input Data Skew Margin	$T_{RSKM}$	400			ps	
Clock High Time	$T_{LVCH}$	$4/(7 \times RX_{FCLK})$			ns	
Clock Low Time	$T_{LVCL}$	$3/(7 \times RX_{FCLK})$			ns	
PLL Wake-up Time	$T_{enPLL}$			150	us	
LVDS Spread Spectrum Clocking (SSC) Tolerance of LVDS Receiver						
Modulation Frequency	$SSC_{MF}$			100	KHz	
Modulation Rate	$SSC_{MR}$			+/-3	%	



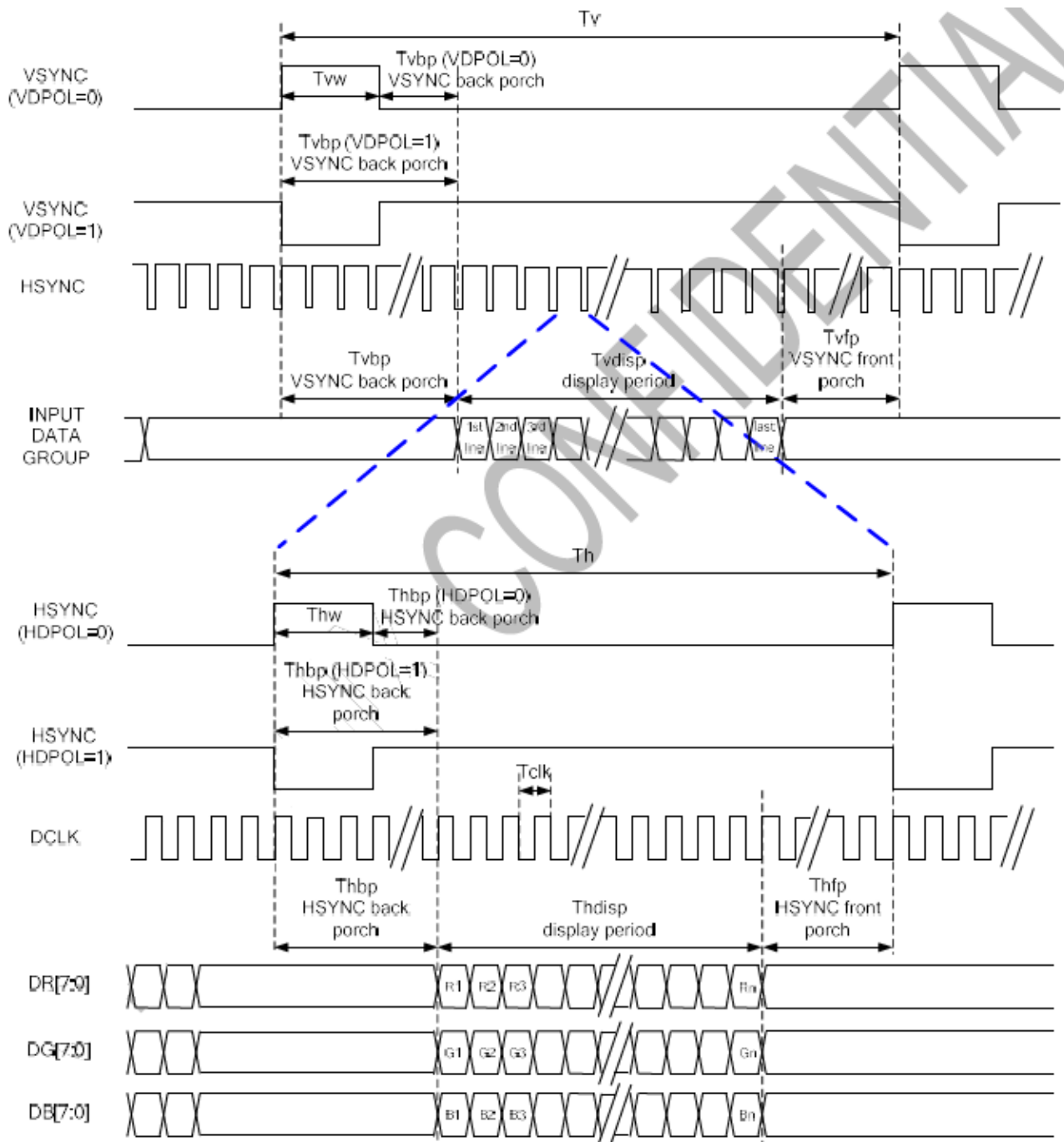
## TTL

### Timing for RGB Interface

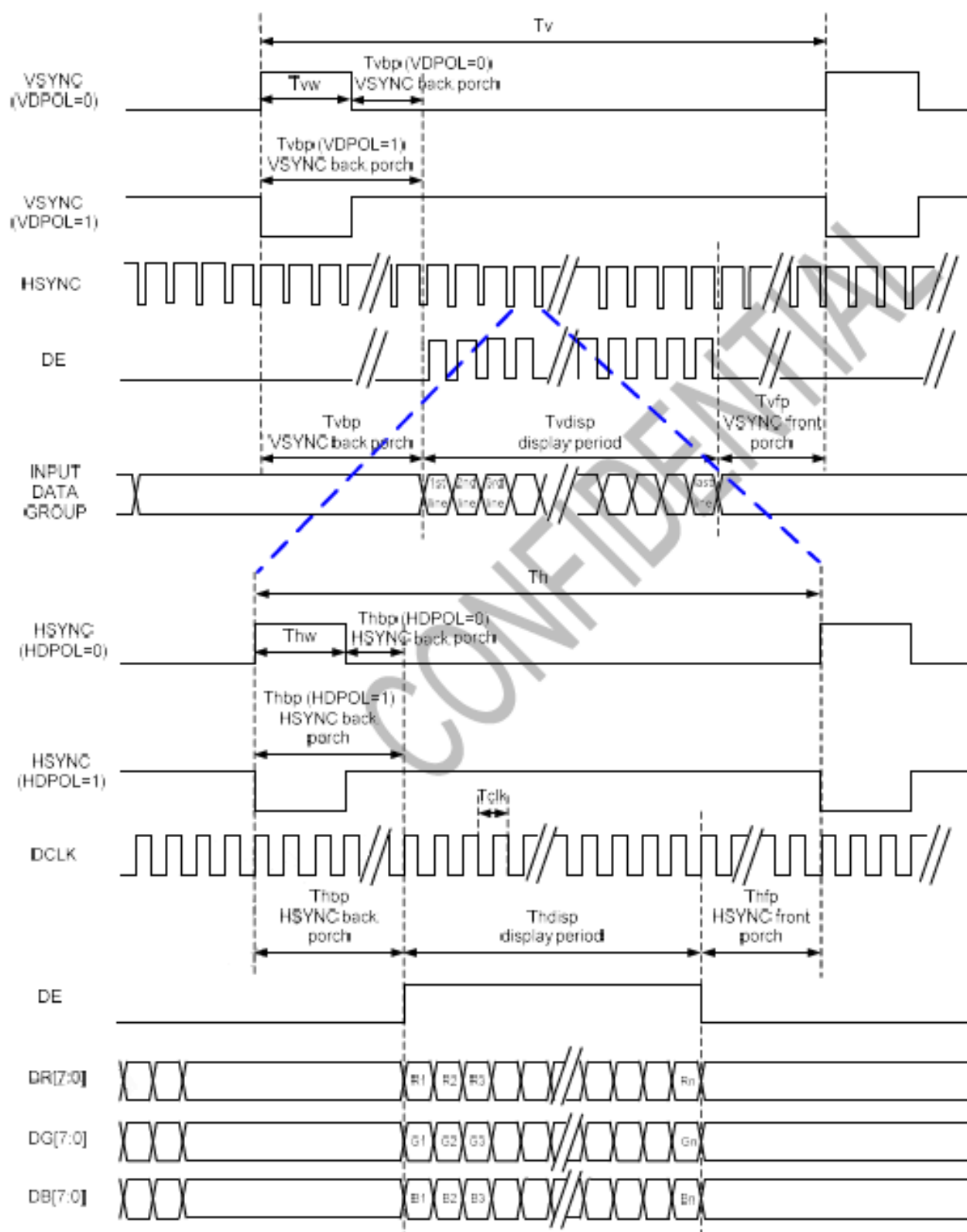


Item	Symbol	Min.	Typ.	Max.	Unit	Conditions
CLK Pulse Duty	Tcw	40	50	60	%	
VSYNC Setup Time	Tvst	-	-	10	ns	
VSYNC Hold Time	Tvhd	-	-	10	ns	
HSYNC Setup Time	Thst	-	-	10	ns	
HSYNC Hold Time	Thhd	-	-	10	ns	
Data Setup Time	Tdsu	-	-	10	ns	
Data Hold Time	Tdhd	-	-	10	ns	
DE Setup Time	Tdest	-	-	10	ns	
DE Hold Time	Tdehd	-	-	10	ns	

## SYNC Mode

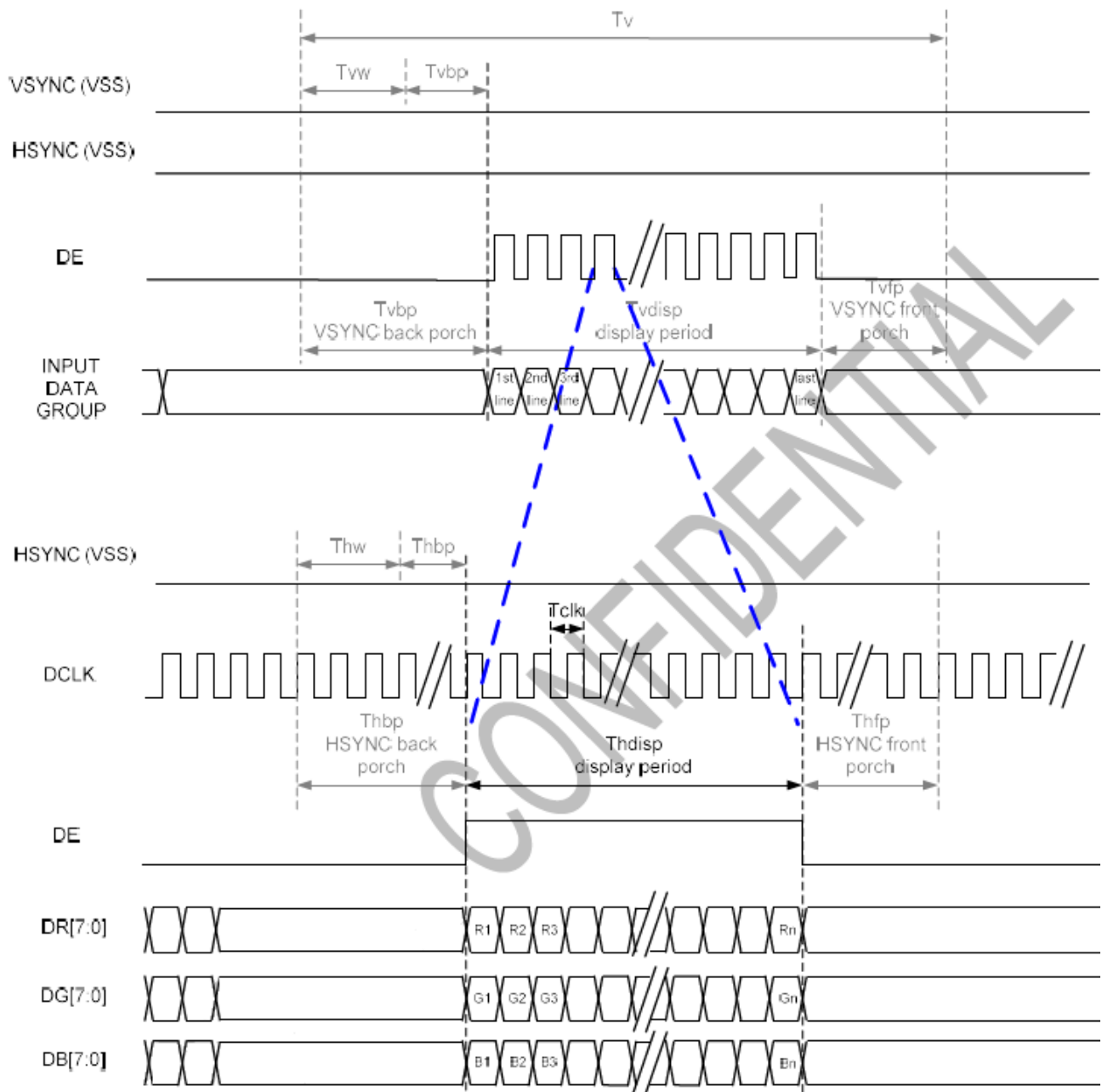


## SYNC-DE Mode





## DE mode



Parallel 24-bit RGB Input Timing (PVDD=PVDD1=VDD=VDDI= 3.3V, AGND= 0V, TA=25°C)

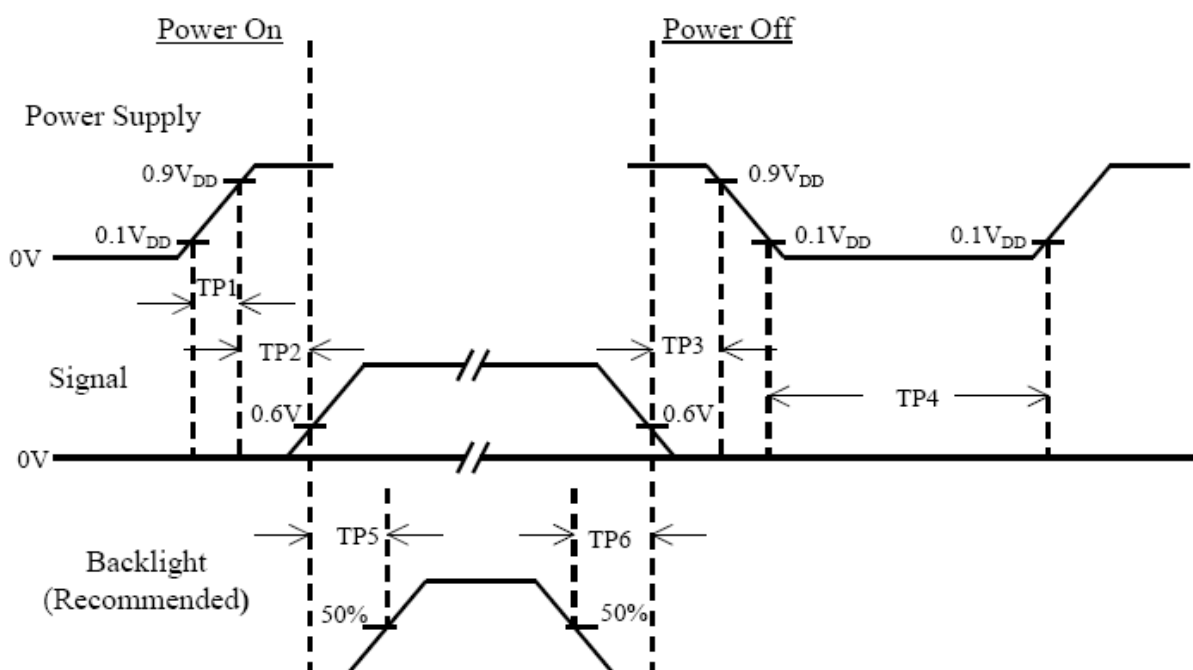
Parallel 24-bit RGB Interface Timing Table							
Item		Symbol	Min.	Typ.	Max.	Unit	Remark
DCLK Frequency		Fclk	23	25	27	MHz	
HSYNC	Period Time	Th	-	816	896	DCLK	
	Display Period	Thdisp	800			DCLK	
	Back Porch	Thbp	-	8	48	DCLK	
	Front Porch	Thfp	-	8	48	DCLK	
	Pulse Width	Thw	-	4	8	DCLK	
VSYNC	Period Time	Tv	-	496	504	HSYNC	
	Display Period	Tvdisp	480			HSYNC	
	Back Porch	Tvbp	-	8	12	HSYNC	
	Front Porch	Tvfp	-	8	12	HSYNC	
	Pulse Width	Tvw	-	4	8	HSYNC	

## 6. Interface Pin Assignment

Pin No	Symbol	Function
1	ENPROG	Not use. Keep no connection.
2	DISP	DISP sets the display mode L : Standby mode (Default) H : Normal display mode
3	VDD	3.3V Power Supply for LCD
4	VDD	3.3V Power Supply for LCD
5	GND	Power Ground
6	GND	Power Ground
7	SCL	Not use. Keep no connection.
8	SDA	Not use. Keep no connection.
9	CS	Not use. Keep no connection.
10	GRB	Global reset pin. When GRB is "L", internal initialization procedure is executed.
11	GND	Power Ground
12	DCLKN	Sampling Clock
13	DCLKP	Sampling Clock
14	GND	Power Ground
15	D3N	Transmission Data of Pixels 3
16	D3P	Transmission Data of Pixels 3
17	GND	Power Ground
18	D2N	Transmission Data of Pixels 2
19	D2P	Transmission Data of Pixels 2
20	GND	Power Ground
21	D1N	Transmission Data of Pixels 1
22	D1P	Transmission Data of Pixels 1
23	GND	Power Ground
24	D0N	Transmission Data of Pixels
25	D0P	Transmission Data of Pixels

26	GND	Power Ground
27	GND	Power Ground
28	XR/NC	Not use. Keep no connection.
29	YD/NC	Not use. Keep no connection.
30	XL/NC	Not use. Keep no connection.
31	YU/NC	Not use. Keep no connection.
32	SC	Not use. Keep no connection. Scan direction selectable by jumper.
33	VLED	Power supply of LED driving circuit
34	VLED	Power supply of LED driving circuit
35	PWM	Adjust for LED Brightness
36	GND	Power Ground
37	LEDK/NC	Not use. Keep no connection.
38	LEDA/NC	Not use. Keep no connection.
39	LEDK/NC	Not use. Keep no connection.
40	LEDA/NC	Not use. Keep no connection.

## 7. Power On/Off Sequence



Item	Min.	Typ.	Max.	Unit	Remark
TP1	0.5	--	10	msec	
TP2	0	--	50	msec	
TP3	0	--	50	msec	
TP4	500	--	--	msec	
TP5	200	--	--	msec	
TP6	200	--	--	msec	

Note(1) The supply voltage of the external system for the module input should be the same as the definition of VDD.

Note(2) Apply the lamp voltage within the LCD operation range. When the back-light turns on before the LCD operation or the LCD turns off before the back-light turns off, the display may momentarily become white.

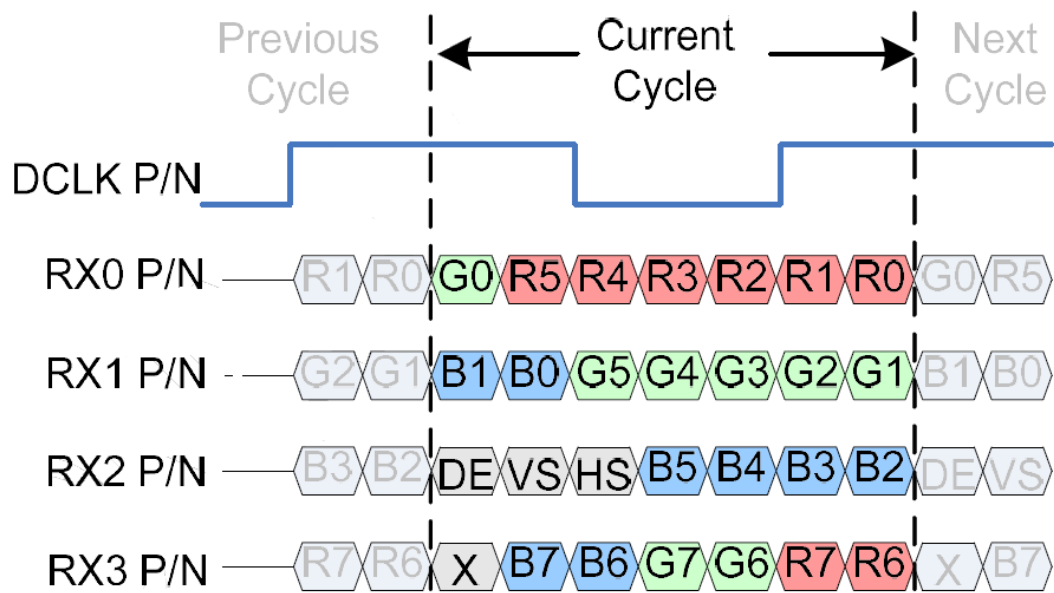
Note(3) In case of VDD = off level, please keep the level of input signal on the low or keep a high impedance.

Note(4) TP4 should be measured after the module has been fully discharged between power off and on period.

Note(5) Interface signal shall not be kept at high impedance when the power is on.

## 8. Displayed Color and Input Data

### 4 Lane VESA Data Format Color Bit Map



## 9. Touch Panel Electrical Specification

### 9.1 Basic Characteristics

Item	Specification
Interface Type	Projective Capacitive Multi-Touch Panel
Activation	Multi-fingers or Single-finger
X/Y Position Reporting	Absolute Position
Touch Force	No contact pressure required
Calibration	No need for calibration
Report Rate	Approx. 100 points/sec
Interface	I2C
Control IC	ILI2117A

### 9.2 Optical Characteristic

Item	Specification
Transmittance	85% (min)

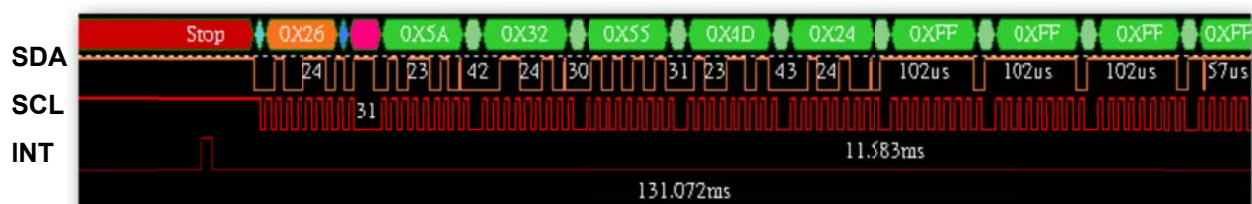
### 9.3 Electrical Characteristic

Item	Specification
I2C Interface	Power & signal Input 3.3V

### 9.4 Interface Pin Assign

Pin	Name	Description
1	SCL	I2C Clock
2	SDA	I2C Data
3	VDD	Power 3.3V
4	RESET	Active "Low"
5	INT	Interrupt Request pin
6	GND	Power GND

## 9.5 I2C AC Waveform

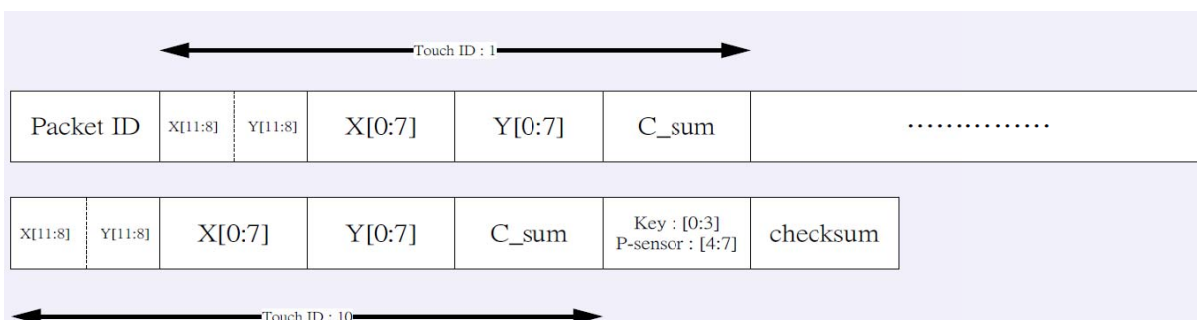


## 9.6 I2C Characteristics

1. Slave address: 0x26
2. Clock: up to 400 kHz
3. Packet length : 43 byte
4. Finger\_i touch end: The data which belongs to finger\_i is 0xFF
5. Position\_X[11:0] and Position\_Y[11:0] are ranging from 0~2047
6. Touch end: all data is 0xFF except for packet ID (0x5A) and checksum.
7. C\_sum : total delta\_C of each finger touch

## 9.7 Data Format

Slave Address	Byte 0	Byte 1	Byte 2	Byte 3	Byte 4	Byte 5	Byte 6	Byte 7
0x26(r)	Packet ID (0x5A)	X00[11:8] Y00[11:8]	X00[7:0]	Y00[7:0]	C_sum	X01[11:8] Y01[11:8]	X01[7:0]	Y01[7:0]
	C_sum	X02[11:8] Y02[11:8]	X02[7:0]	Y02[7:0]	C_sum	X03[11:8] Y03[11:8]	X03[7:0]	Y03[7:0]
	C_sum	X04[11:8] Y04[11:8]	X04[7:0]	Y04[7:0]	C_sum	X05[11:8] Y05[11:8]	X05[7:0]	Y05[7:0]
	C_sum	X06[11:8] Y06[11:8]	X06[7:0]	Y06[7:0]	C_sum	X07[11:8] Y07[11:8]	X07[7:0]	Y07[7:0]
	C_sum	X08[11:8] Y08[11:8]	X08[7:0]	Y08[7:0]	C_sum	X09[11:8] Y09[11:8]	X09[7:0]	Y09[7:0]
	C_sum	Key[3:0]	Checksum					





## 10. Reliability Test Conditions

Test Item	Test Conditions	Note
High Temperature Operation	80±3°C , t=240 hrs	
Low Temperature Operation	-30±3°C , t=240 hrs	
High Temperature Storage	80±3°C , t=240 hrs	(1),(2)
Low Temperature Storage	-30±3°C , t=240 hrs	(1),(2)
Storage Humidity Test	60 °C, Humidity 90%, 240 hrs	(1),(2)
Vibration Test (Packing)	Sweep frequency : 10 ~ 50 ~ 10 Hz/1min Amplitude : 0.75mm Test direction : X.Y.Z/3 axis Duration : 30min/each axis	(2)

Note(1) Condensation of water is not permitted on the module.

Note(2) The module should be inspired after 1 hour storage in normal conditions (15~35°C , 45~65%RH).

Note(3) The module shouldn't be tested over one condition, and all the tests are independent.

Note(4) All reliability tests should be done without the protective film.

Definitions of life end point:

- Current drain should be smaller than the specific value.
- Function of the module should be maintained.
- Appearance and display quality should not have degraded noticeably.
- Contrast ratio should be greater than 50% of initial value.

## **11. Use Precautions**

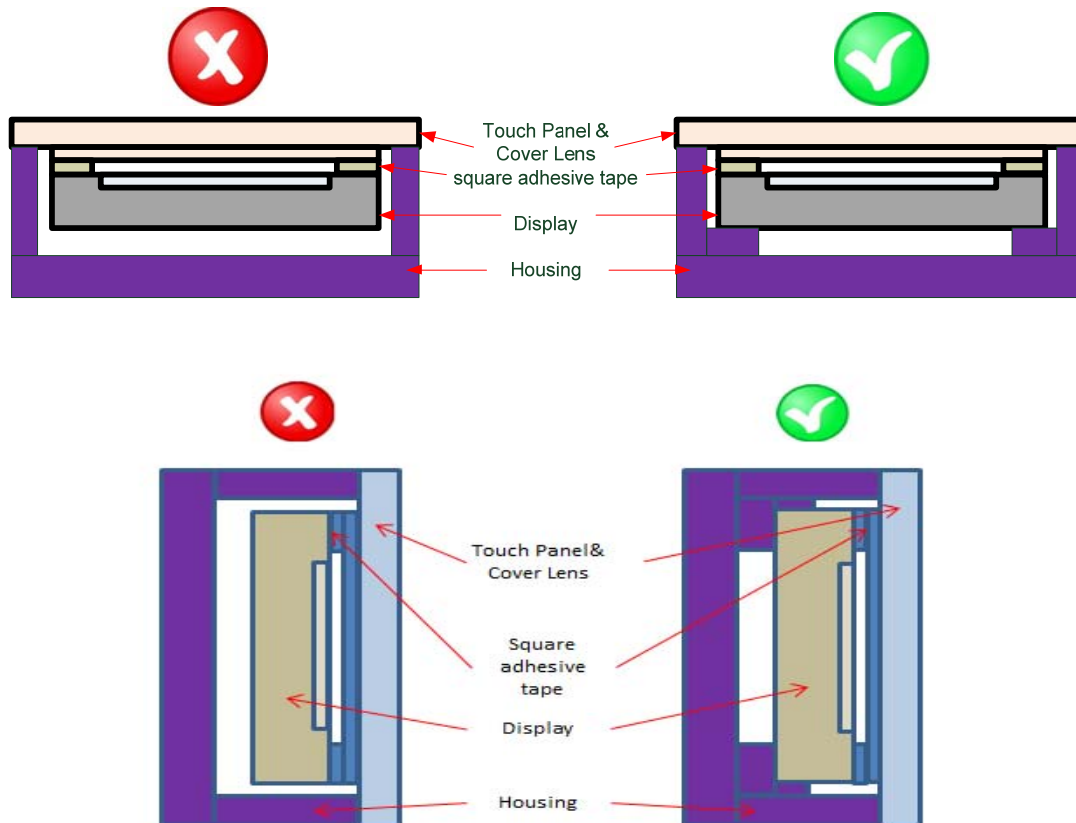
### **11.1 Handling precautions**

- (1) The polarizing plate may break easily so be careful when handling it. Do not touch, press or rub it with a hard-material tool like tweezers.
- (2) Do not touch the polarizing plate surface with bare hands so as not to make it dirty. If the surface or other related part of the polarizing plate is dirty, soak a soft cotton cloth or chamois leather in benzine and wipe off with it. Do not use chemical liquids such as acetone, toluene and isopropyl alcohol. Failure to do so may bring chemical reaction phenomena and deteriorations.
- (3) Remove any spit or water immediately. If it is left for hours, the suffered part may deform or decolorize.
- (4) If the LCD element breaks and any LC stuff leaks, do not suck or lick it. Also if LC stuff is stuck on your skin or clothing, wash thoroughly with soap and water immediately.

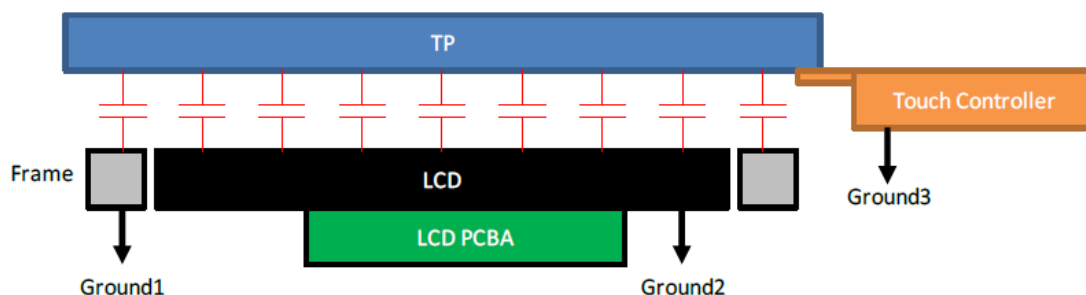
### **11.2 Installing precautions**

- (1) The PCB has many ICs that may be damaged easily by static electricity. To prevent breaking by static electricity from the human body and clothing, earth the human body properly using the high resistance and discharge static electricity during the operation. In this case, however, the resistance value should be approx.  $1M\Omega$  and the resistance should be placed near the human body rather than the ground surface. When the indoor space is dry, static electricity may occur easily so be careful. We recommend the indoor space should be kept with humidity of 60% or more. When a soldering iron or other similar tool is used for assembly, be sure to earth it.
- (2) When installing the module and ICs, do not bend or twist them. Failure to do so may crack LC element and cause circuit failure.
- (3) To protect LC element, especially polarizing plate, use a transparent protective plate (e.g., acrylic plate, glass etc) for the product case.
- (4) Do not use an adhesive like a both-side adhesive tape to make LCD surface (polarizing plate) and product case stick together. Failure to do so may cause the polarizing plate to peel off.

- (5) Please hold the LCD module properly when you use or store it.
- (6) The square adhesive tape which is between the touch panel and display can't provide well supporting in the long term and high ambient temperature condition. Whether upright or horizontal position the support holder which is in the back side of the display is needed. Do not let the display floating.



- (7) TP needs to work in environment with stable stray capacitance. In order to minimize the variation in stray capacitance, all conductive mechanical parts must not be floating. Intermittent floating any conductive part around the touch sensor may cause significant stray capacitance change and abnormal touch function. It is recommended to keep all conductive parts having same electrical potential as the GND of the touch controller module.



GND1, GND2 and GND3 should be connected together to have the same ground

### 11.3 Storage precautions

- (1) Avoid a high temperature and humidity area. Keep the temperature between 0°C and 35°C and also the humidity under 60%.
- (2) Choose the dark spaces where the product is not exposed to direct sunlight or fluorescent light.
- (3) Store the products as they are put in the boxes provided from us or in the same conditions as we recommend.

### 11.4 Operating precautions

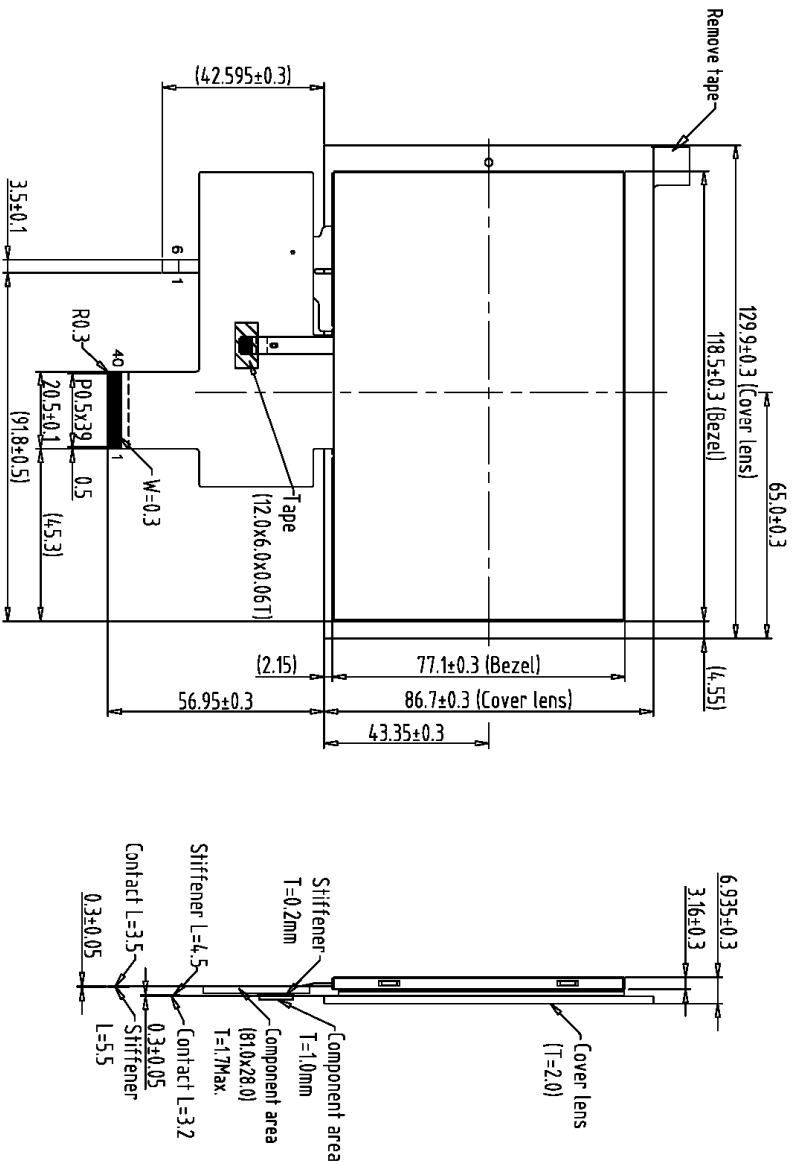
- (1) Do not boost the applied drive voltage abnormally. Failure to do so may break ICs. When applying power voltage, check the electrical features beforehand and be careful. Always turn off the power to the LC module controller before removing or inserting the LC module input connector. If the input connector is removed or inserted while the power is turned on, the LC module internal circuit may break.
- (2) The display response may be late if the operating temperature is under the normal standard, and the display may be out of order if it is above the normal standard. But this is not a failure; this will be restored if it is within the normal standard.
- (3) The LCD contrast varies depending on the visual angle, ambient temperature, power voltage etc. Obtain the optimum contrast by adjusting the LC drive voltage.
- (4) When carrying out the test, do not take the module out of the low-temperature space suddenly. Failure to do so will cause the module condensing, leading to malfunctions.
- (5) Make certain that each signal noise level is within the standard (L level: 0.2V<sub>dd</sub> or less and H level: 0.8V<sub>dd</sub> or more) even if the module has functioned properly. If it is beyond the standard, the module may often malfunction. In addition, always connect the module when making noise level measurements.
- (6) The CMOS ICs are incorporated in the module and the pull-up and pull-down function is not adopted for the input so avoid putting the input signal open while the power is ON.
- (7) The characteristic of the semiconductor element changes when it is exposed to light emissions, therefore ICs on the LCD may malfunction if they receive light emissions. To prevent these malfunctions, design and assemble ICs so that they are shielded from light emissions.
- (8) Crosstalk occurs because of characteristics of the LCD. In general, crosstalk occurs when the regularized display is maintained. Also, crosstalk is affected by the LC drive voltage. Design the contents of the display, considering crosstalk.

### 11.5 Other

- (1) Do not disassemble or take the LC module into pieces. The LC modules once disassembled or taken into pieces are not the guarantee articles.
- (2) The residual image may exist if the same display pattern is shown for hours. This residual image, however, disappears when another display pattern is shown or the drive is interrupted and left for a while. But this is not a problem on reliability.
- (3) Do not keep the LCD at the same display pattern continually. The residual image will happen and it will damage the LCD. Please use screen saver.
- (4) AMIPRE will provide one year warrantee for all products and three months warrantee for all repairing products.



REV	REVISION RECORD	DATE	NAME
0	NEW RELEASE	11-01-20	SNOW



1	ENPROG	21	D1N
2	DISP	22	D1P
3	VDD	23	GND
4	VDD	24	DON
5	GND	25	DOP
6	GND	26	GND
7	SCL	27	GND
8	SDA	28	XR/NC
9	CS	29	YD/NC
10	GRB	30	XL/NC
11	GND	31	YU/NC
12	DCLKN	32	SC
13	DCLKP	33	VELED
14	GND	34	VELED
15	D3N	35	PWM
16	D3P	36	GND
17	GND	37	LEDK/NC
18	D2N	38	LEDK/NC
19	D2P	39	LEDK/NC
20	GND	40	LEDK/NC

1	T/P (12C)
2	SDA
3	VDD
4	RESET
5	INT
6	GND

- Note:
1. Unless indicated, Tolerance "±0.3"
  2. UV Glue For OLB Protection.
  3. LCD 800x480 (R.G.B) TFT LCD => 5.0" TFT LCD

Back view

1	800480N3-30	7		TOLERANCE GRADIENT	A	B	DIK.	MM	DIV.	SNOW	DATE	TITLE
2	800480A2-T10 G/G (1798048011)	8					IE NO.		CHEK.		DATE	800480N7-T31
3		9										(5.0") IPS 12C
4		10										
5		11										
6		12										

AMPIRE 晶采光電科技	DATE	SHEET
800480N7-T31	10-08-20	1 OF 1
(5.0") IPS 12C		
DWG. NO. +201034MA		

### **13. Package**

TBD