



晶采光電科技股份有限公司
AMPIRE CO., LTD.

SPECIFICATIONS FOR LCD MODULE

CUSTOMER	
CUSTOMER PART NO.	
AMPIRE PART NO.	AM-800600K2TMQW-00H
APPROVED BY	
DATE	

☐ Approved For Specifications

☐ Approved For Specifications & Sample

AMPIRE CO., LTD.

**Building A., 4F., No.116, Sec. 1, Sintai 5th Rd., Xizhi Dist,
New Taipei City 221, Taiwan (R.O.C.)**

新北市汐止區新台五路一段 116 號 4 樓(東方科學園區 A 棟)

TEL:886-2-26967269 , FAX:886-2-26967196 or 26967270

APPROVED BY	CHECKED BY	ORGANIZED BY

RECORD OF REVISION

Revision Date	Page	Contents	Editor
2010/10/21	-	New Release	Kevin
2011/01/14	8	Add LED driver current	Kevin
	8	Modify LED current & voltage	Kevin
	12-14	Add new inspection standard	Kevin
2011/01/18	18	Replace with the New Drawing	Kevin
2011/02/10	3	Add Power Consumption	Kevin
2011/03/25	3	Add 6-bit Feature	Kevin
	9	Modify the Interface	Kevin
	10	Cancel the SEL 6/8 function	Kevin
2011/05/20	17,18	Replace the new drawing	Kevin
2011/05/27	11	Add Timing characteristics	Kevin
2011/08/22	16	Correct the reliability test condition	Kevin
	12	Add LVDS timing characteristics	Kevin
2012/03/08	9	Modify Backlight Power Source connect name	Kain
	19,20	Modify Interface defined	
2012/09/12	3	Mention the LCM Including the LED driver IC.	Emil
2012/9/28		Remove the INCOMING INSPECTION STANDARD	Kokai
2012/11/2	8	Modify back-light driving condition	Patrick
2013/7/29	5	Modify Optical Characteristics	Simon

1 INSTRUCTION

Ampire 10.4" Display Module is a color active matrix TFT-LCD that uses amorphous silicon TFT as a switching device . This model is composed of a TFT-LCD panel , a driving circuit , power supply circuit and a LED backlight system . This TFT-LCD has a high resolution SVGA(800(R.G.B) X 600) and can display up to 16.2M colors.

1-1. Features

- 10.4" (diagonal) configuration
- Input interface voltage : 3.3V
- LCD type : Transmissive , Normally White
- LVDS Interface
- 6-Bit Mode Only
- Build-in LED driver IC (12V)

1-2. Applications

- Portable TV

2 PHYSICAL SPECIFICATIONS

Item	Specifications	unit
Display resolution(dot)	800RGB (W) x 600(H)	dots
Active area	211.2 (W) x 158.4(H)	mm
View area	214.8(W) x 162.7(H)	mm
Pixel pitch	0.264 (W) x 0.264 (H)	mm
Color configuration	R.G.B -stripe	-
Overall dimension	243.0(W) x 185.6(H) x 7.2(D)	mm
Viewing direction	6 o'clock	-
Brightness	500	cd/m ²
Contrast ratio	500	-
Power Consumption	5(Max)	W
Display color	262K	color
Backlight unit	LED	-

3 ELECTRICAL CHARACTERISTICS

3.1 Electrical Absolute Rating

Item	Symbol	Values		UNIT	Note
		Min.	Max.		
Power voltage	V _{DD}	-0.3	4.0	V	GND=0V
Voltage range at any terminal	-	-0.3	V _{DD} +0.3	V	

3.2 Environment Absolute Rating

Item	Symbol	Min.	Max.	Unit	Note
Operating Temperature	T _{opa}	-30	80	°C	
Storage Temperature	T _{stg}	-35	85	°C	

3.3 ELECTRICAL CHARACTERISTICS

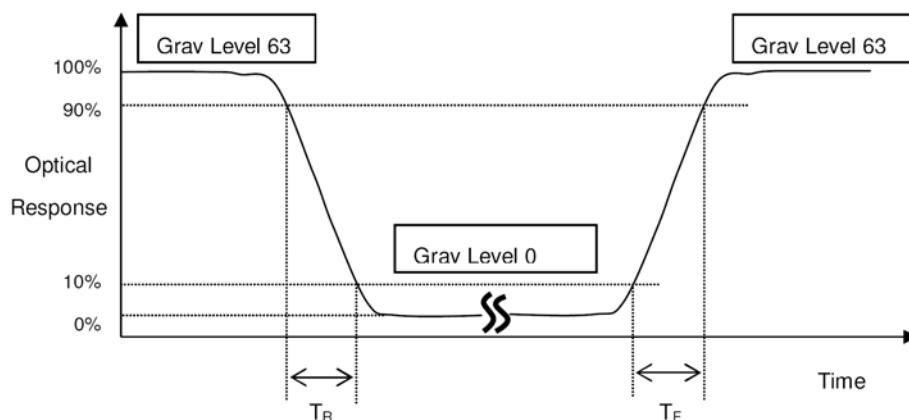
Item	Symbol	Min	Typ	Max	Unit	Note
Power Voltage	V _{DD}	-	3.3	-	V	
LED Power Voltage	V _{CC}	-	12	-	V	
High-level Input Voltage	V _{IH}	0.8V _{CC}	-	V _{CC}	V	
Low-level Input Voltage	V _{IL}	GND	-	0.2V _{CC}	V	
Differential Input High Threshold	V _{TH}	-	-	0.1	V	
Differential Input Low Threshold	V _{TL}	-0.1	-	-	V	

4 OPTICAL CHARACTERISTICS

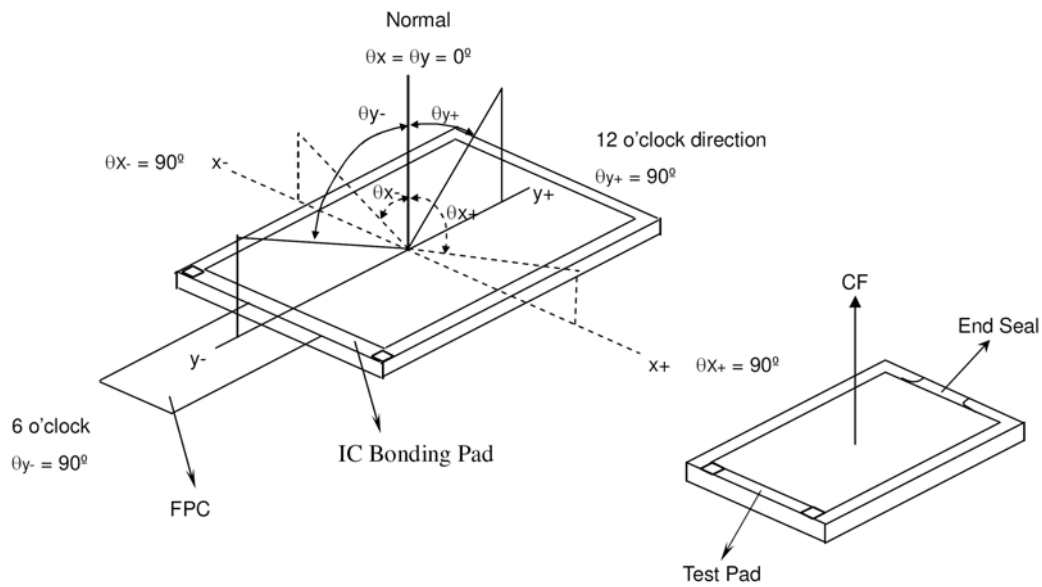
Item		Symbol	Conditions	Min	Typ	Max	Unit	Note
Contrast Ration		CR	Viewing normal angle $\Theta_x = \Theta_y = 0$	-	500	-	-	(2)
Response Time		T _R		-	5	10	ms	
		T _F		-	15	20	ms	
Viewing Angle	Hor.	Θ _{x+}	Center CR>10	-	70	-	deg	(3)
		Θ _{x-}		-	70	-	deg	
	Ver.	Θ _{y+}		-	50	-	deg	
		Θ _{y-}		-	60	-	deg	
Module Chromaticity	Red	X _R	Viewing normal angle $\Theta_x = \Theta_y = 0$	0.550	0.600	0.650		
		Y _R		0.294	0.344	0.394		
	Green	X _G		0.304	0.354	0.404		
		Y _G		0.529	0.579	0.629		
	Blue	X _B		0.105	0.155	0.205		
		Y _B		0.076	0.126	0.176		
	White	X _W		0.240	0.290	0.340		
		Y _W		0.268	0.318	0.368		
Brightness		-	-	-	500	-	Cd/m ²	(4)

*Note(1) These items are measured by BM-7 in the dark room (no ambient light)

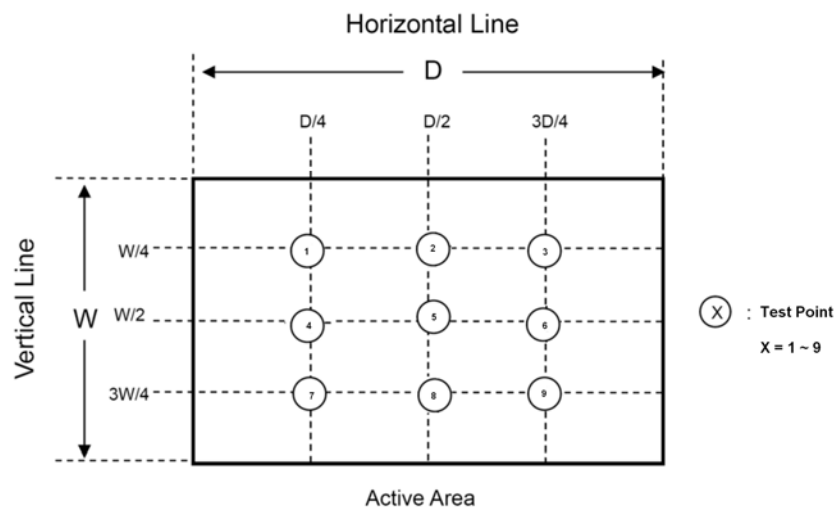
*Note(2) Definition of Response Time (T_R, T_F):



*Note(3) Definition of Viewing Angle



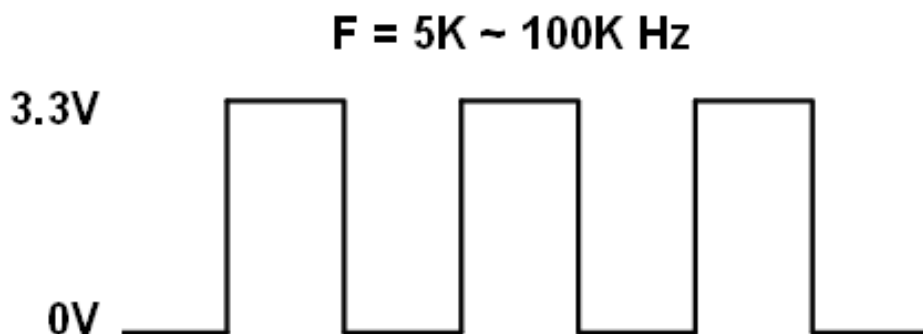
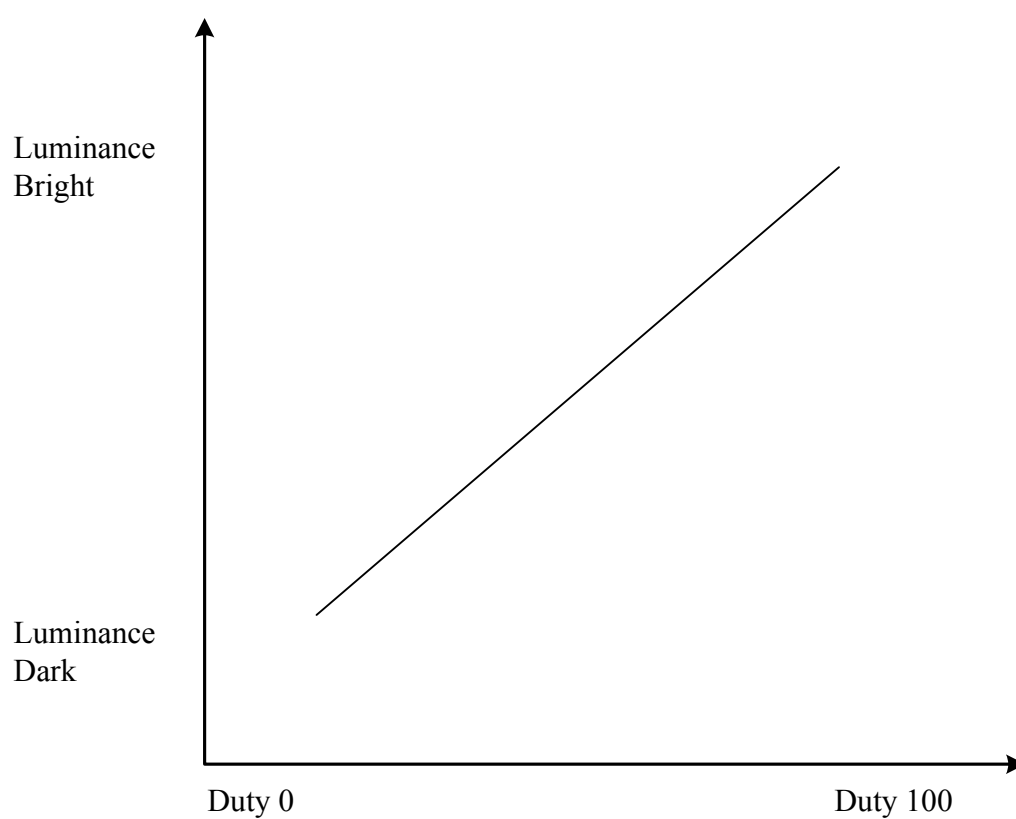
*Note(4) The Brightness is the Test Point (5) which at the center of V.A.



5 Backlight Driving Condition

ITEM	SYMBOL	MIN	TYP	MAX	UNIT	NOTE
LED Voltage	VLED	16.8	19	21	V	
LED Current	ILED	-	133	-	mA	LED driver provide fixed current
LED power consumption	-	-	2527	-	mW	
LED life time	-	-	30,000	-	Hr	
LED driver Voltage	V_LED_driver	-	12	-	V	
LED driver Current	I_LED_driver	200	240	280	mA	LED 100% On

PWM Dimming Control



6 INTERFACE

CN1 : LCM PIN Definition

Pin no	Symbol	Function
1	VDD	Power Supply:3.3V
2	VDD	Power Supply:3.3V
3	GND	Power Ground
4	DPS	Reverse Scan Function [H:Enable ; L:Disable]
5	RxIN0-	Transmission Data of Pixels 0
6	RxIN0+	Transmission Data of Pixels 0
7	GND	Power Ground
8	RxIN1-	Transmission Data of Pixels 1
9	RxIN1+	Transmission Data of Pixels 1
10	GND	Power Ground
11	RxIN2-	Transmission Data of Pixels 2
12	RxIN2+	Transmission Data of Pixels 2
13	GND	Power Ground
14	RxCLKIN-	LVDS receiver signal clock
15	RxCLKIN+	LVDS receiver signal clock
16	GND	Power Ground
17	RSV	Reserved for internal test. Please treat it as NC
18	RSV	Reserved for internal test. Please treat it as NC
19	RSV	Reserved for internal test. Please treat it as NC
20	RSV	Reserved for internal test. Please treat it as NC

CN2 : Backlight adjustment PIN Definition

Pin no	Symbol	Function
1	VCC	Power Supply:12V
2	GND	Power Ground
3	ON/OFF	Function selection
4	Dimming	Adjust brightness
5	NA	No Connection

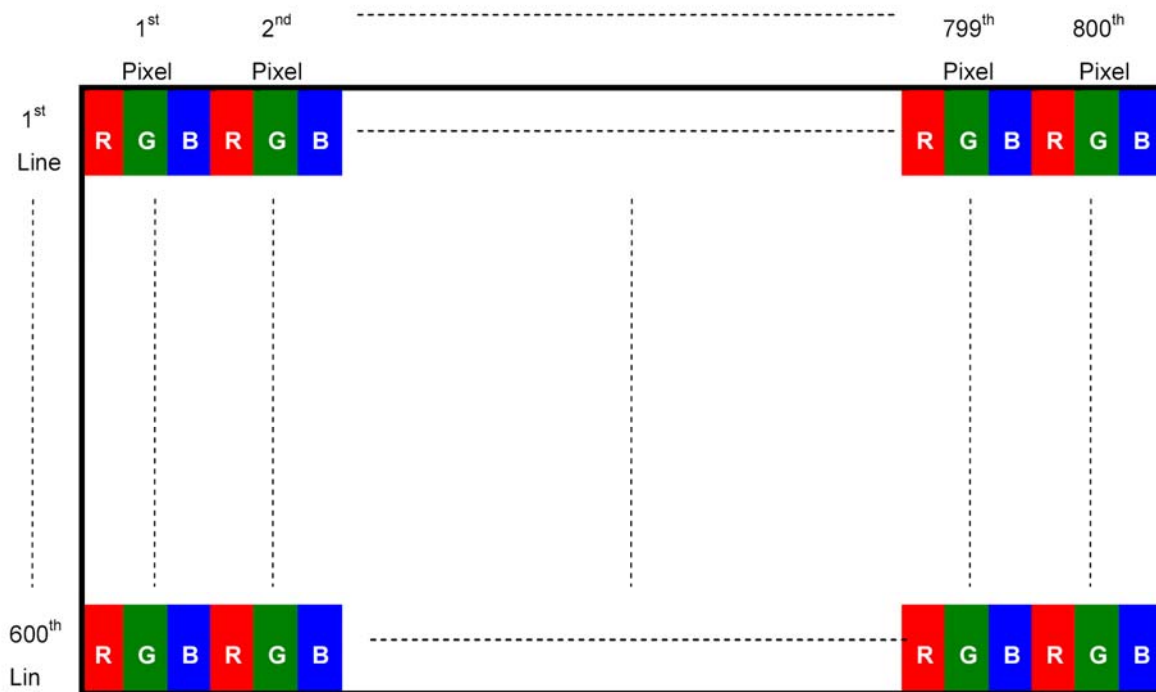
CN4 : Backlight Power Source PIN Definition

Pin no	Symbol	Function
1	A	Power 19V
2	K	Power Ground

7 Signal Characteristics

7.1 Pixel Format Image

Following figure shows the relationship between input signal and LCD pixel format.



7.2 Scanning Direction

The following figures show the image seen from the front view. The arrow indicates the direction of scan.

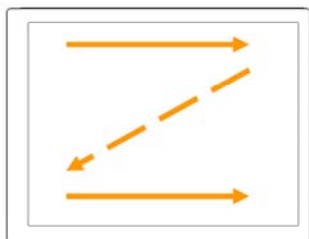


Fig. 1 Normal scan (Pin4, DPS = Low or NC)

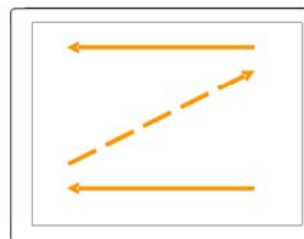


Fig. 2 Reverse scan (Pin4, DPS = High)

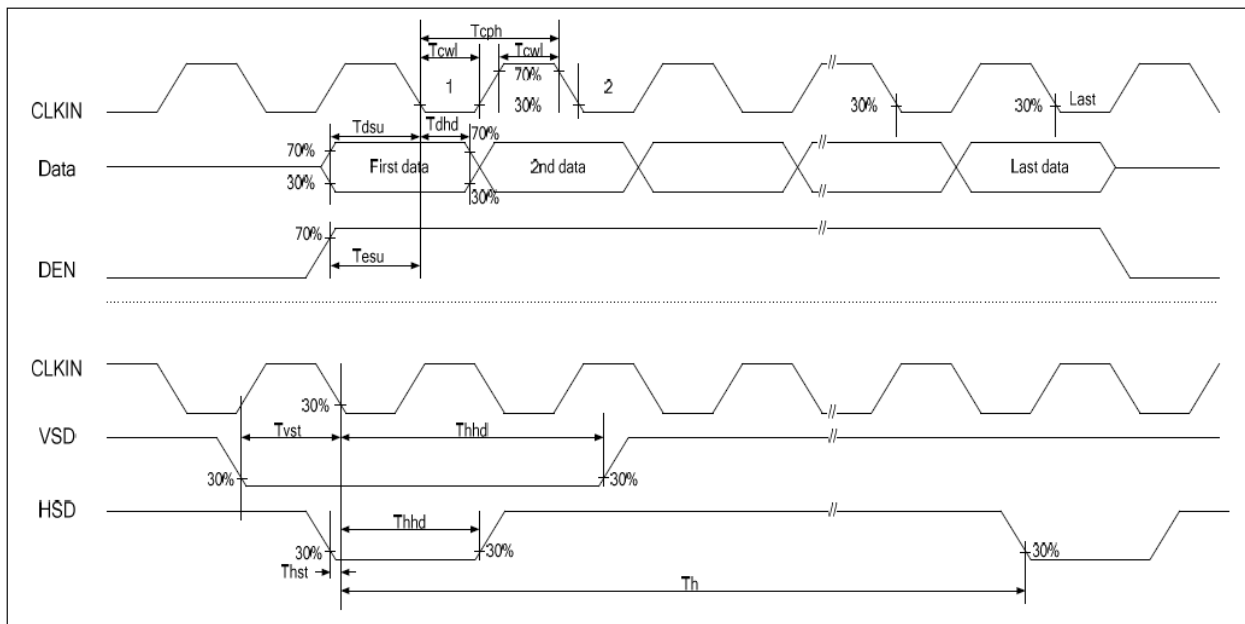
7.3 Timing characteristics

Horizontal Timing

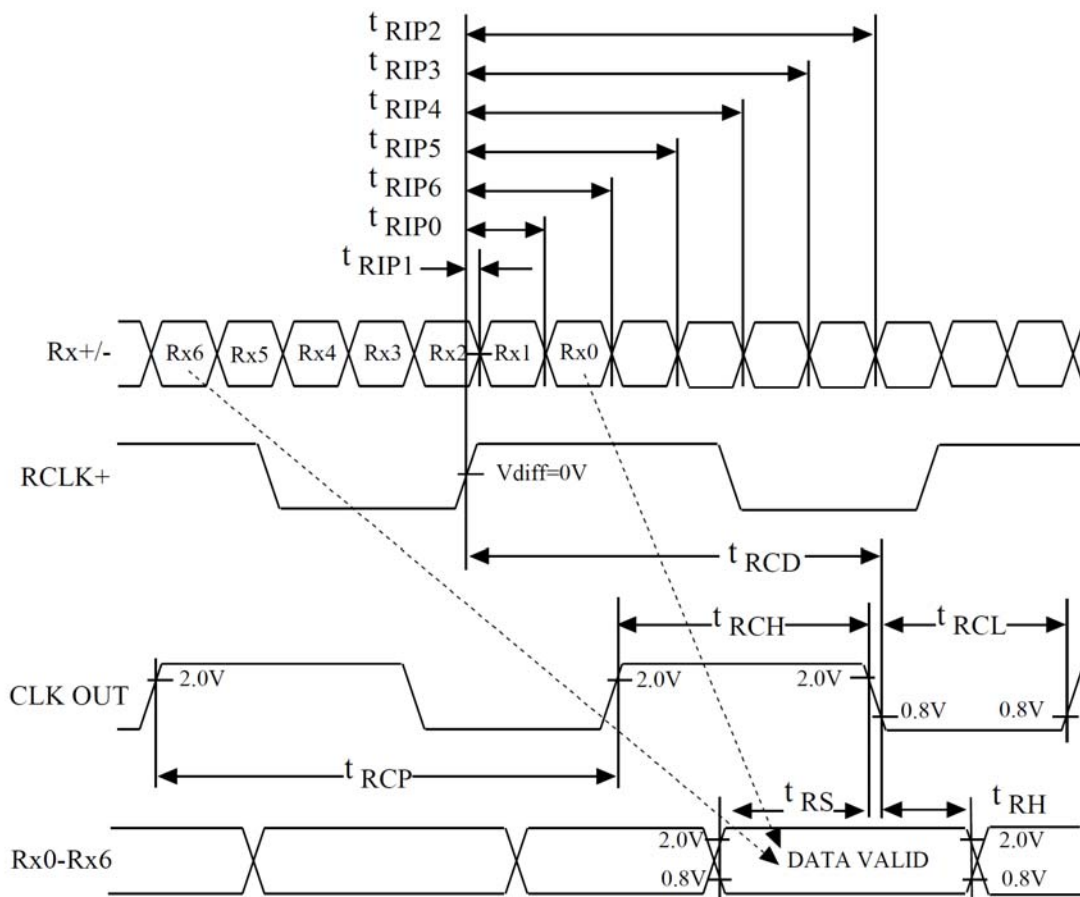
Parameter	Symbol	Spec.			Unit
		Min.	Typ.	Max.	
Horizontal Display Area	thd	800			DCLK
DCLK frequency	Fclk	-	40	50	MHz
One Horizontal Line	th	862	1056	1200-	DCLK
HS pulse width(Min.)	thpw	1			DCLK
HS pulse width (Typical.)	thpw	-			DCLK
HS pulse width (Max.)	thpw	40			DCLK
HS Back Porch (Blanking)	thb	46	46	46	DCLK
HS Front Porch	thfp	16	210	354	DCLK

Vertical Timing

Parameter	Symbol	Spec.			Unit
		Min.	Typ.	Max.	
Vertical Display Area	tv	600			T _H
VS period	tv	624	635	700	T _H
VS pulse width	thpw	1	-	20	T _H
VS Back Porch (Blanking)	tvb	23	23	23	T _H
VS Front Porch	thfp	1	12	77	T _H



t_{RCP}	CLK OUT Period	11.76	T	50.0	ns
t_{RCH}	CLK OUT High Time		$4T/7$		ns
t_{RCL}	CLK OUT Low Time		$3T/7$		ns
t_{RCD}	RCLK+/- to CLK OUT Delay		$5T/7$		ns
t_{RS}	TTL Data Setup to CLK OUT	$3T/7-2.5$			ns
t_{RH}	TTL Data Hold from CLK OUT	$4T/7-3.5$			ns
t_{TLH}	TTL Low to High Transition Time		3.0	5.0	ns
t_{THL}	TTL High to Low Transition Time		3.0	5.0	ns
t_{RIP1}	Input Data Position 0 (T=11.76ns)	-0.4	0.0	0.4	ns
t_{RIP0}	Input Data Position 1 (T=11.76ns)	$T/7-0.4$	$T/7$	$T/7+0.4$	ns
t_{RIP6}	Input Data Position 2 (T=11.76ns)	$2T/7-0.4$	$2T/7$	$2T/7+0.4$	ns
t_{RIP5}	Input Data Position 3 (T=11.76ns)	$3T/7-0.4$	$3T/7$	$3T/7+0.4$	ns
t_{RIP4}	Input Data Position 4 (T=11.76ns)	$4T/7-0.4$	$4T/7$	$4T/7+0.4$	ns
t_{RIP3}	Input Data Position 5 (T=11.76ns)	$5T/7-0.4$	$5T/7$	$5T/7+0.4$	ns
t_{RIP2}	Input Data Position 6 (T=11.76ns)	$6T/7-0.4$	$6T/7$	$6T/7+0.4$	ns
t_{RPLL}	Phase Lock Loop Set			10	ms



Note:

1) $V_{diff} = (R_{A+}) - (R_{A-}), \dots (RCLK+) - (RCLK-)$

8 QUALITY AND RELIABILITY

Test Item	Test Conditions	Note
High Temperature Operation	80±3°C , t=240 hrs	
Low Temperature Operation	-30±3°C , t=240 hrs	
High Temperature Storage	85±3°C , t=240 hrs	1,2
Low Temperature Storage	-35±3°C , t=240 hrs	1,2
Thermal Shock Test	-20°C ~ 25°C ~ 70°C 30 m in. 5 min. 30 min. (1 cycle) Total 5 cycle	1,2
Humidity Test	60 °C, Humidity 90%, 240 hrs	1,2
Vibration Test (Packing)	Sweep frequency : 10 ~ 55 ~ 10 Hz/1min Amplitude : 0.75mm Test direction : X.Y.Z/3 axis Duration : 30min/each axis	2

Note 1 : Condensation of water is not permitted on the module.

Note 2 : The module should be inspected after 1 hour storage in normal conditions
(15-35°C , 45-65%RH).

Definitions of life end point :

- Current drain should be smaller than the specific value.
- Function of the module should be maintained.
- Appearance and display quality should not have degraded noticeably.
- Contrast ratio should be greater than 50% of the initial value.

9 USE PRECAUTIONS

9.1 Handling precautions

- 1) The polarizing plate may break easily so be careful when handling it. Do not touch, press or rub it with a hard-material tool like tweezers.
- 2) Do not touch the polarizing plate surface with bare hands so as not to make it dirty. If the surface or other related part of the polarizing plate is dirty, soak a soft cotton cloth or chamois leather in benzine and wipe off with it. Do not use chemical liquids such as acetone, toluene and isopropyl alcohol. Failure to do so may bring chemical reaction phenomena and deteriorations.
- 3) Remove any spit or water immediately. If it is left for hours, the suffered part may deform or decolorize.
- 4) If the LCD element breaks and any LC stuff leaks, do not suck or lick it. Also if LC stuff is stuck on your skin or clothing, wash thoroughly with soap and water immediately.

9.2 Installing precautions

- 1) The PCB has many ICs that may be damaged easily by static electricity. To prevent breaking by static electricity from the human body and clothing, earth the human body properly using the high resistance and discharge static electricity during the operation. In this case, however, the resistance value should be approx. $1M\Omega$ and the resistance should be placed near the human body rather than the ground surface. When the indoor space is dry, static electricity may occur easily so be careful. We recommend the indoor space should be kept with humidity of 60% or more. When a soldering iron or other similar tool is used for assembly, be sure to earth it.
- 2) When installing the module and ICs, do not bend or twist them. Failure to do so may crack LC element and cause circuit failure.
- 3) To protect LC element, especially polarizing plate, use a transparent protective plate (e.g., acrylic plate, glass etc) for the product case.
- 4) Do not use an adhesive like a both-side adhesive tape to make LCD surface (polarizing plate) and product case stick together. Failure to do so may cause the polarizing plate to peel off.

9.3 Storage precautions

- 1) Avoid a high temperature and humidity area. Keep the temperature between 0°C and 35°C and also the humidity under 60%.
- 2) Choose the dark spaces where the product is not exposed to direct sunlight or fluorescent light.
- 3) Store the products as they are put in the boxes provided from us or in the same conditions as we recommend.

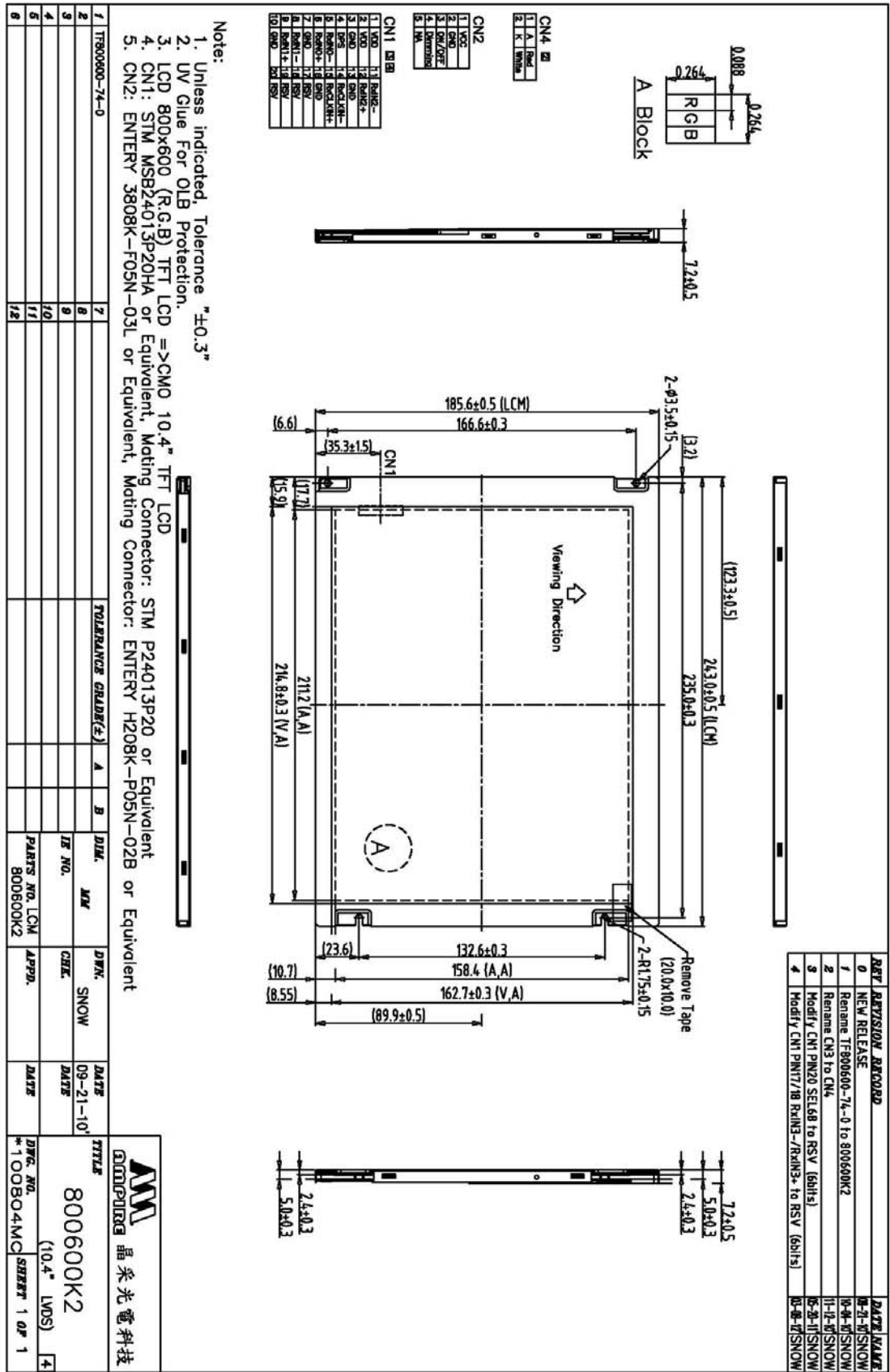
9.4 Operating precautions

- 1) Do not boost the applied drive voltage abnormally. Failure to do so may break ICs. When applying power voltage, check the electrical features beforehand and be careful. Always turn off the power to the LC module controller before removing or inserting the LC module input connector. If the input connector is removed or inserted while the power is turned on, the LC module internal circuit may break.
- 2) The display response may be late if the operating temperature is under the normal standard, and the display may be out of order if it is above the normal standard. But this is not a failure; this will be restored if it is within the normal standard.
- 3) The LCD contrast varies depending on the visual angle, ambient temperature, power voltage etc. Obtain the optimum contrast by adjusting the LC drive voltage.
- 4) When carrying out the test, do not take the module out of the low-temperature space suddenly. Failure to do so will cause the module condensing, leading to malfunctions.
- 5) Make certain that each signal noise level is within the standard (L level: $0.2V_{dd}$ or less and H level: $0.8V_{dd}$ or more) even if the module has functioned properly. If it is beyond the standard, the module may often malfunction. In addition, always connect the module when making noise level measurements.
- 6) The CMOS ICs are incorporated in the module and the pull-up and pull-down function is not adopted for the input so avoid putting the input signal open while the power is ON.
- 7) The characteristic of the semiconductor element changes when it is exposed to light emissions, therefore ICs on the LCD may malfunction if they receive light emissions. To prevent these malfunctions, design and assemble ICs so that they are shielded from light emissions.
- 8) Crosstalk occurs because of characteristics of the LCD. In general, crosstalk occurs when the regularized display is maintained. Also, crosstalk is affected by the LC drive voltage. Design the contents of the display, considering crosstalk.

9.5 Other

- 1) Do not disassemble or take the LC module into pieces. The LC modules once disassembled or taken into pieces are not the guarantee articles.
- 2) The residual image may exist if the same display pattern is shown for hours. This residual image, however, disappears when another display pattern is shown or the drive is interrupted and left for a while. But this is not a problem on reliability.
- 3) AMIPRE will provide one year warranty for all products and three months warrantee for all repairing products.

10. OUTLINE DIMENSION



Front View Dimensions:

- Top edge: 124±0.5, 50±0.3, 24±0.3
- Right edge: 123.3±0.5, 26.3±0.5, 235.0±0.3, 3.2
- Bottom edge: 72±0.5
- Internal dimensions: 185.6±0.5, 132.6±0.3, (89.9±0.5), (23.6)
- Bottom connector area: 107.0±1.5 (Reference), 107.5±1.5 (Reference), 35.3±1.5, 56.4±1.5

Pin Configurations:

- CN1 (16 pins):** 1. VDD, 2. VSS, 3. VDD, 4. VSS, 5. VDD, 6. VSS, 7. VDD, 8. VSS, 9. VDD, 10. VSS, 11. VDD, 12. VSS, 13. VDD, 14. VSS, 15. VDD, 16. VSS
- CN2 (4 pins):** 1. VCC, 2. GND, 3. VCC, 4. GND
- CN4 (4 pins):** 1. A, 2. K, 3. VDD, 4. VSS

Back View: Shows the module from the reverse side with dimensions 107.0±1.5 (Reference) and 107.5±1.5 (Reference).

Table 1: Part Number and Title

Part No.	Title
800600K2	800600K2

Table 2: Revision History

Rev.	Date	Description
1	08-02-10	Initial Release

Back view

1

AMP 晶采光電科技

800600K2

10.4 LVDS

DWG. NO. *100805MC SHEET 1 OF 1

SHEET 1 OF 1

1

Date : 2013/7/29

AMPIRE CO., LTD.

17