



晶采光電科技股份有限公司  
AMPIRE CO., LTD.

## SPECIFICATIONS FOR LCD MODULE

<b>CUSTOMER</b>	
<b>CUSTOMER PART NO.</b>	
<b>AMPIRE PART NO.</b>	<b>AM-320240LQTZQW-60H</b>
<b>APPROVED BY</b>	
<b>DATE</b>	

☐ Approved For Specifications

☐ Approved For Specifications & Sample

**AMPIRE CO., LTD.**

**Building A., 4F., No.116, Sec. 1, Sintai 5th Rd., Xizhi Dist,  
New Taipei City 221, Taiwan (R.O.C.)**

**新北市汐止區新台五路一段 116 號 4 樓(東方科學園區 A 棟)**

**TEL:886-2-26967269 , FAX:886-2-26967196 or 26967270**

<b>APPROVED BY</b>	<b>CHECKED BY</b>	<b>ORGANIZED BY</b>

## RECORD OF REVISION

Revision Date	Page	Contents	Editor
2019/01/15	--	New Release.	Raymond
2019/03/26	11	Update BL life time	Raymond

## 1 General Description and Features

3.5 inch Amorphous-TFT-LCD (Thin Film Transistor Liquid Crystal Display) module. This module is composed of a 3.5" TFT-LCD panel, a driver circuit and backlight unit.

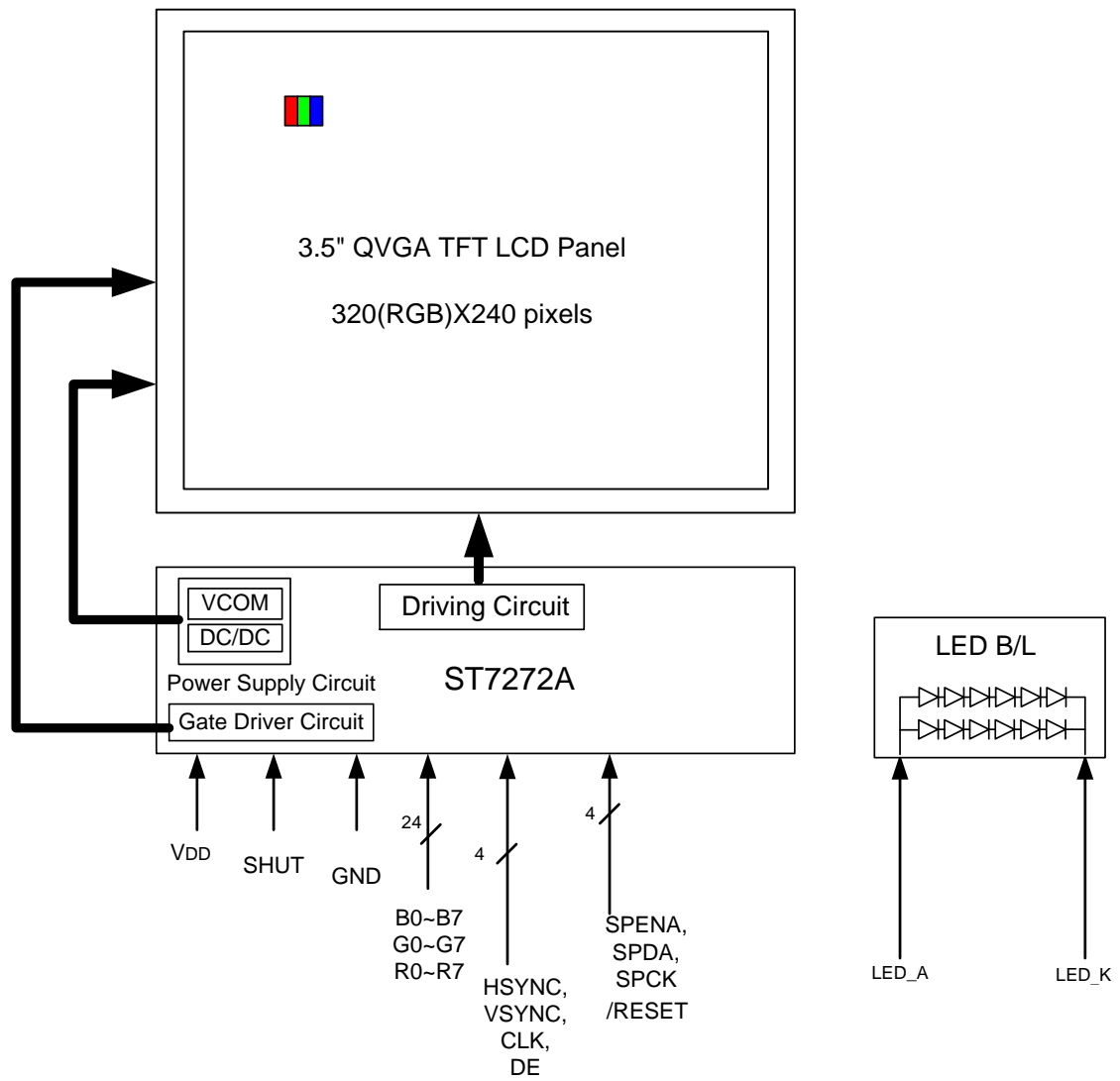
- 1.1 Construction: 3.5" IPS TFT-LCD, White LED Backlight.
- 1.2 Resolution (pixel): 320(R.G.B) X240.
- 1.3 Number of the Colors: 16.7M (R, G, B 8 bit digital each).
- 1.4 LCD type: Transmissive Color TFT LCD
- 1.5 24Bit RGB Interface/3-wire SPI interface
- 1.6 Interface: 50 pin.
- 1.7 Power Supply Voltage: 3.3V single power input. Built-in power supply circuit.

## 2 Physical specifications

Item	Specifications	unit
Display Resolution	320(RGB)(W) x 240(H)	dot
Active area	70.08 x 52.56	mm
Screen size	3.5(Diagonal)	inch
Pixel pitch	0.219 (W) x 0.219 (H)	mm
Color configuration	R.G.B – Vertical stripe	
Overall Dimension	76.9(W) x 63.9(H) x 3.15(T)	mm
Input interface	digital 24-bits RGB	
Backlight unit	White LED	
Display Mode	Normally Black	

Note 1: Requirements on Environmental Protection: RoHS

### 3 Functional Block Diagram



## 4 Electrical Specifications

### TFT LCD Panel FPC Descriptions

Pin no	Symbol	I/O	Description	Remark
1	LED_K	P	LED backlight Cathode	
2	LED_K	P	LED backlight Cathode	
3	LED_A	P	LED backlight Anode	
4	LED_A	P	LED backlight Anode	
5	NC	--	No Connect	
6	RESET	I	low active; internal initialization procedure is executed	
7	SPENA	I	Serial communication chip selection	
8	SPCK	I	SPI Serial Clock input	
9	SPDA	I/O	SPI Serial Data input and output	
10	NC	--	No Connect	
11	B7	I	Blue Data Bit 7	
12.	B6	I	Blue Data Bit 6	
13.	B5	I	Blue Data Bit 5	
14.	B4	I	Blue Data Bit 4	
15.	B3	I	Blue Data Bit 3	
16.	B2	I	Blue Data Bit 2	
17.	B1	I	Blue Data Bit 1	
18.	B0	I	Blue Data Bit 0	
19.	G7	I	Green Data Bit 7	
20.	G6	I	Green Data Bit 6	
21.	G5	I	Green Data Bit 5	
22.	G4	I	Green Data Bit 4	
23.	G3	I	Green Data Bit 3	
24.	G2	I	Green Data Bit 2	
25.	G1	I	Green Data Bit 1	
26.	G0	I	Green Data Bit 0	
27.	R7	I	Red Data Bit 7	
28.	R6	I	Red Data Bit 6	
29.	R5	I	Red Data Bit 5	
30.	R4	I	Red Data Bit 4	
31.	R3	I	Red Data Bit 3	
32.	R2	I	Red Data Bit 2	
33.	R1	I	Red Data Bit 1	
34.	R0	I	Red Data Bit 0	
35.	CLK	I	Data Clock	

36.	HSYNC	I	Horizontal Synchronous Signal	
37.	VSYNC	I	Vertical Synchronous Signal	
38.	DEN	I	Data enabling signal	
39.	VDD	P	Power supply (3.3V)	
40	VDD	P	Power supply (3.3V)	
41	VDD	P	Power supply (3.3V)	
42	VDD	P	Power supply (3.3V)	
43	NC	--	Must keep floating.	
44	NC	--		
45	NC	--		
46	NC	--		
47	Shutdown	I	High level: Normal display mode Low level: Standby mode	
48	NC	--	No Connect	
49	GND	P	Ground	
50	GND	P	Ground	

Note 2-1:

I/O definition: I – Input O – Output P – Power/Ground

## 5 Basic Display Color and Gray Scale

	Display	MSB				LSB				MSB				LSB				MSB				LSB				Gray scale Level
		R7	R6	R5	R4	R3	R2	R1	R0	G7	G6	G5	G4	G3	G2	G1	G0	B7	B6	B5	B4	B3	B2	B1	B0	
Basic color	Black	L	L	L	L	L	L	L	L	L	L	L	L	L	L	L	L	L	L	L	L	L	L	L	L	-
	Blue	L	L	L	L	L	L	L	L	L	L	L	L	L	L	L	L	H	H	H	H	H	H	H	H	-
	Green	L	L	L	L	L	L	L	L	H	H	H	H	H	H	H	H	L	L	L	L	L	L	L	L	-
	Light Blue	L	L	L	L	L	L	L	L	H	H	H	H	H	H	H	H	H	H	H	H	H	H	H	H	-
	Red	H	H	H	H	H	H	H	H	L	L	L	L	L	L	L	L	L	L	L	L	L	L	L	L	-
	Purple	H	H	H	H	H	H	H	H	L	L	L	L	L	L	L	L	H	H	H	H	H	H	H	H	-
	Yellow	H	H	H	H	H	H	H	H	H	H	H	H	H	H	H	H	L	L	L	L	L	L	L	L	-
	White	H	H	H	H	H	H	H	H	H	H	H	H	H	H	H	H	H	H	H	H	H	H	H	H	-
Gray scale of Red	Black	L	L	L	L	L	L	L	L	L	L	L	L	L	L	L	L	L	L	L	L	L	L	L	L	L0
	Dark ↑ ↓ Light	L	L	L	L	L	L	L	H	L	L	L	L	L	L	L	L	L	L	L	L	L	L	L	L	L1
		L	L	L	L	L	L	H	L	L	L	L	L	L	L	L	L	L	L	L	L	L	L	L	L	L2
		:				:				:				:				:				:				L3...L251
		H	H	H	H	H	H	L	L	L	L	L	L	L	L	L	L	L	L	L	L	L	L	L	L	L252
		H	H	H	H	H	H	L	H	L	L	L	L	L	L	L	L	L	L	L	L	L	L	L	L	L253
		H	H	H	H	H	H	L	L	L	L	L	L	L	L	L	L	L	L	L	L	L	L	L	L	L254
	Red	H	H	H	H	H	H	H	H	L	L	L	L	L	L	L	L	L	L	L	L	L	L	L	L	Red L255
Gray scale of Green	Black	L	L	L	L	L	L	L	L	L	L	L	L	L	L	L	L	L	L	L	L	L	L	L	L	L0
	Dark ↑ ↓ Light	L	L	L	L	L	L	L	L	L	L	L	L	L	L	L	H	L	L	L	L	L	L	L	L	L1
		L	L	L	L	L	L	L	L	L	L	L	L	L	L	H	L	L	L	L	L	L	L	L	L	L2
		:				:				:				:				:				:				L3...L251
		L	L	L	L	L	L	L	L	H	H	H	H	H	H	L	L	L	L	L	L	L	L	L	L	L252
		L	L	L	L	L	L	L	L	H	H	H	H	H	H	L	H	L	L	L	L	L	L	L	L	L253
		L	L	L	L	L	L	L	L	H	H	H	H	H	H	L	L	L	L	L	L	L	L	L	L	L254
		L	L	L	L	L	L	L	L	H	H	H	H	H	H	H	L	L	L	L	L	L	L	L	L	Green L255
	Green	L	L	L	L	L	L	L	L	L	L	L	L	L	L	L	L	L	L	L	L	L	L	L	L	L0
Gray scale of Blue	Black	L	L	L	L	L	L	L	L	L	L	L	L	L	L	L	L	L	L	L	L	L	L	L	H	L1
	Dark ↑ ↓ Light	L	L	L	L	L	L	L	L	L	L	L	L	L	L	L	L	L	L	L	L	L	L	H	L	L2
		:				:				:				:				:				:				L3...L251
		L	L	L	L	L	L	L	L	L	L	L	L	L	L	L	H	H	H	H	H	H	L	L	L	L252
		L	L	L	L	L	L	L	L	L	L	L	L	L	L	L	H	H	H	H	H	H	L	H	L	L253
		L	L	L	L	L	L	L	L	L	L	L	L	L	L	L	H	H	H	H	H	H	H	L	L	L254
	Blue	L	L	L	L	L	L	L	L	L	L	L	L	L	L	L	L	H	H	H	H	H	H	H	H	Blue L255

## 6 Absolute Maximum Ratings

(The following are maximum values which, if exceeded, may cause operation or damage to the unit.)

Item	Symbol	Min	Max	Unit	Note
Power Supply Voltage	VDD	-0.3	4.0	V	
Operating Temperature	T <sub>OP</sub>	-30	85	°C	
Storage Temperature	T <sub>ST</sub>	-30	85	°C	

Note:

\*1. Non-condensation.

\*2. Temp. ≤ 60°C, 90%RH Max.

Temp. > 60°C, Absolute humidity shall be less than 90%RH.



## 7 Electrical Characteristics

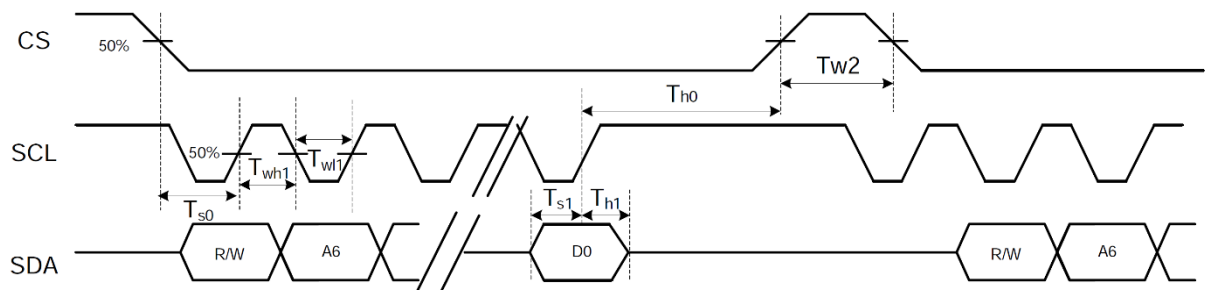
### 7.1 DC Electrical characteristic of the LCD

Typical operating conditions (GND=0V, Ta=25°C)

Item		Symbol	Min.	Typ.	Max.	Unit	Remark
Power supply		VDD	3.0	3.3	3.6	V	
Input Voltage for logic	H Level	$V_{IH}$	$0.7 \cdot VDD$	-	VDD	V	
	L Level	$V_{IL}$	0	-	$0.3 \cdot VDD$	V	
Supply Current		RUN Mode	--	20	--	mA	FR=60Hz
		Standby mode	--	.	50	uA	

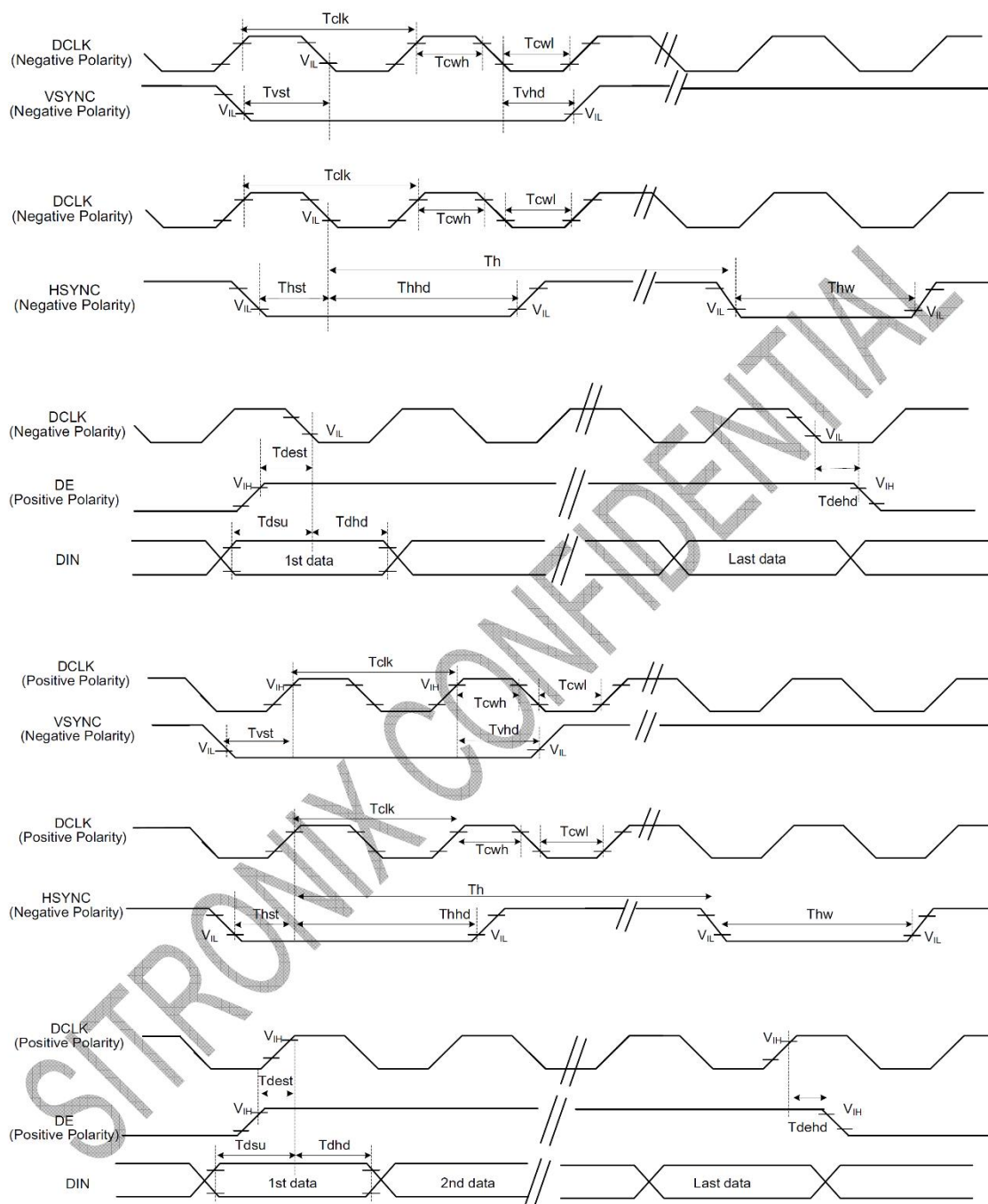
### 7.2 AC Electrical characteristic of the LCD

#### 7.2.1 System Bus Timing of 3-Wire SPI interface



Item	Symbol	Min	Typ	Max	Unit	Conditions
CS Input Setup Time	$T_{s0}$	50	-	-	ns	
Serial Data Input Setup Time	$T_{s1}$	50	-	-	ns	
CS Input Hold Time	$T_{h0}$	50	-	-	ns	
Serial Data Input Hold Time	$T_{h1}$	50	-	-	ns	
SCL Write Pulse High Width	$T_{wh1}$	50	-	-	ns	
SCL Write Pulse Low Width	$T_{wl1}$	50	-	-	ns	
SCL Read Pulse High Width	$T_{rh1}$	300			ns	
SCL Read Pulse Low Width	$T_{rl1}$	300			ns	
CS Pulse High Width	$T_{w2}$	400	-	-	ns	

## 7.2.2 System Bus Timing for RGB Interface



Item	Symbol	Min.	Typ.	Max.	Unit	Conditions
CLK Pulse Duty	$T_{clk}$	40	50	60	%	
HSYNC Width	$T_{hw}$	2	-	-	DCLK	
HSYNC Period	$T_h$	55	60	65	us	
VSYNC Setup Time	$T_{vst}$	12	-	-	ns	
VSYNC Hold Time	$T_{vhd}$	12	-	-	ns	
HSYNC Setup Time	$T_{hst}$	12	-	-	ns	
HSYNC Hold Time	$T_{hhd}$	12	-	-	ns	
Data Setup Time	$T_{dsu}$	12	-	-	ns	
Data Hold Time	$T_{dhd}$	12	-	-	ns	
DE Setup Time	$T_{dest}$	12	-	-	ns	
DE Hold Time	$T_{dehd}$	12	-	-	ns	

### 7.3 Electrical characteristic of LED Back-light

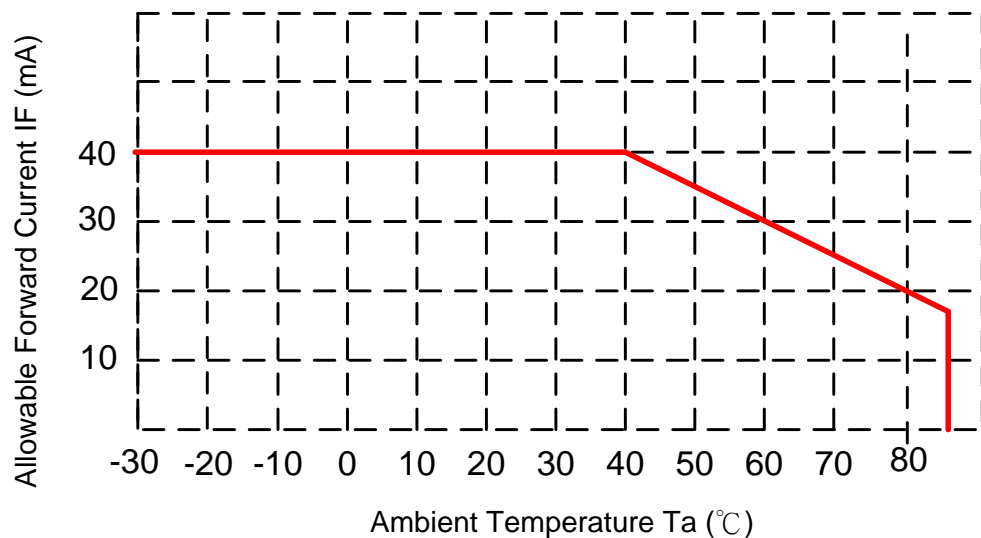
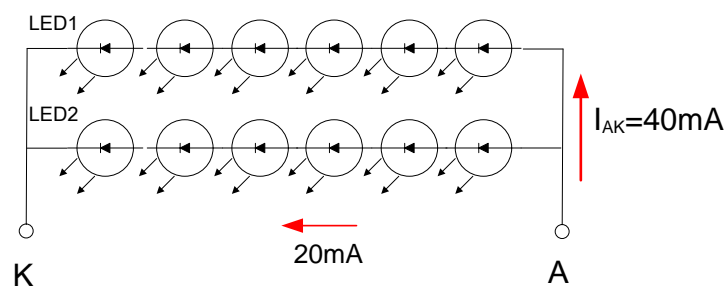
Item	Symbol	Min.	Typ.	Max.	Unit	Remark
Forward current	IF	-	40	--	mA	
Forward voltage	VF	-	18		V	
Power consumption	WBL	-	720	-	mW	
Operating Life time			50		kHrs	Ta=25°C

Note1: The figure below shows the connection of backlight LED.

Note2: Optical performance should be evaluated at Ta=25°C only.

Note3: IF LED is driven by high current, high ambient temperature & humidity condition, the life time of LED will be reduced.

Note4: Operating life means brightness goes down to 50% initial brightness. Typical operating life time is estimated data.



## 8 Communication Interface

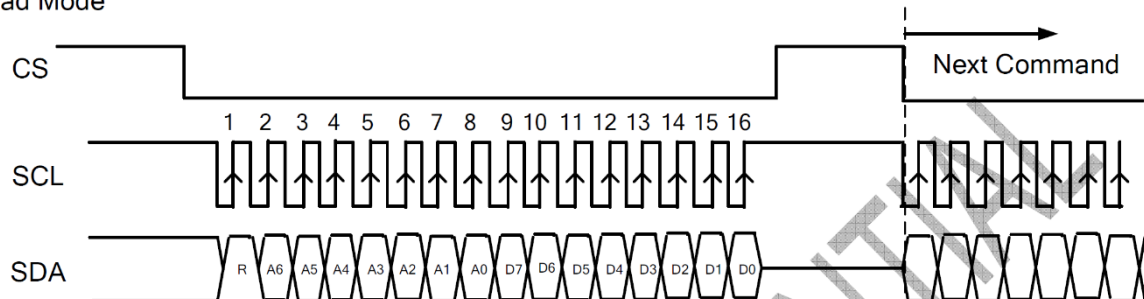
### 8.1 3-wire Serial Interface

R/W: Read/Write mode control bit.

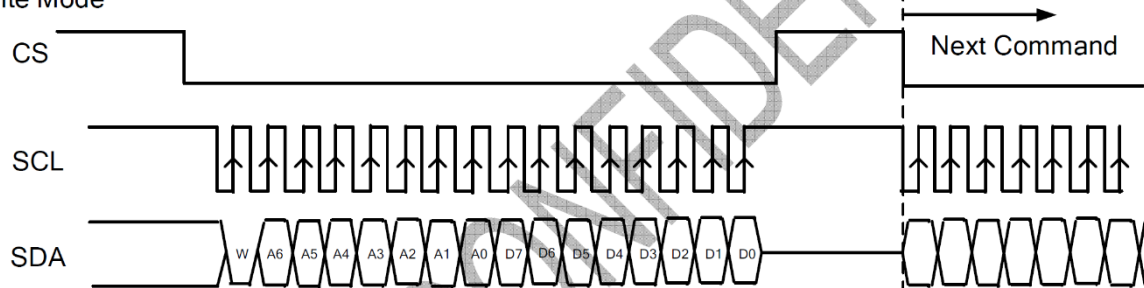
R/W=1: Read mode

R/W=0: Write mode

Read Mode



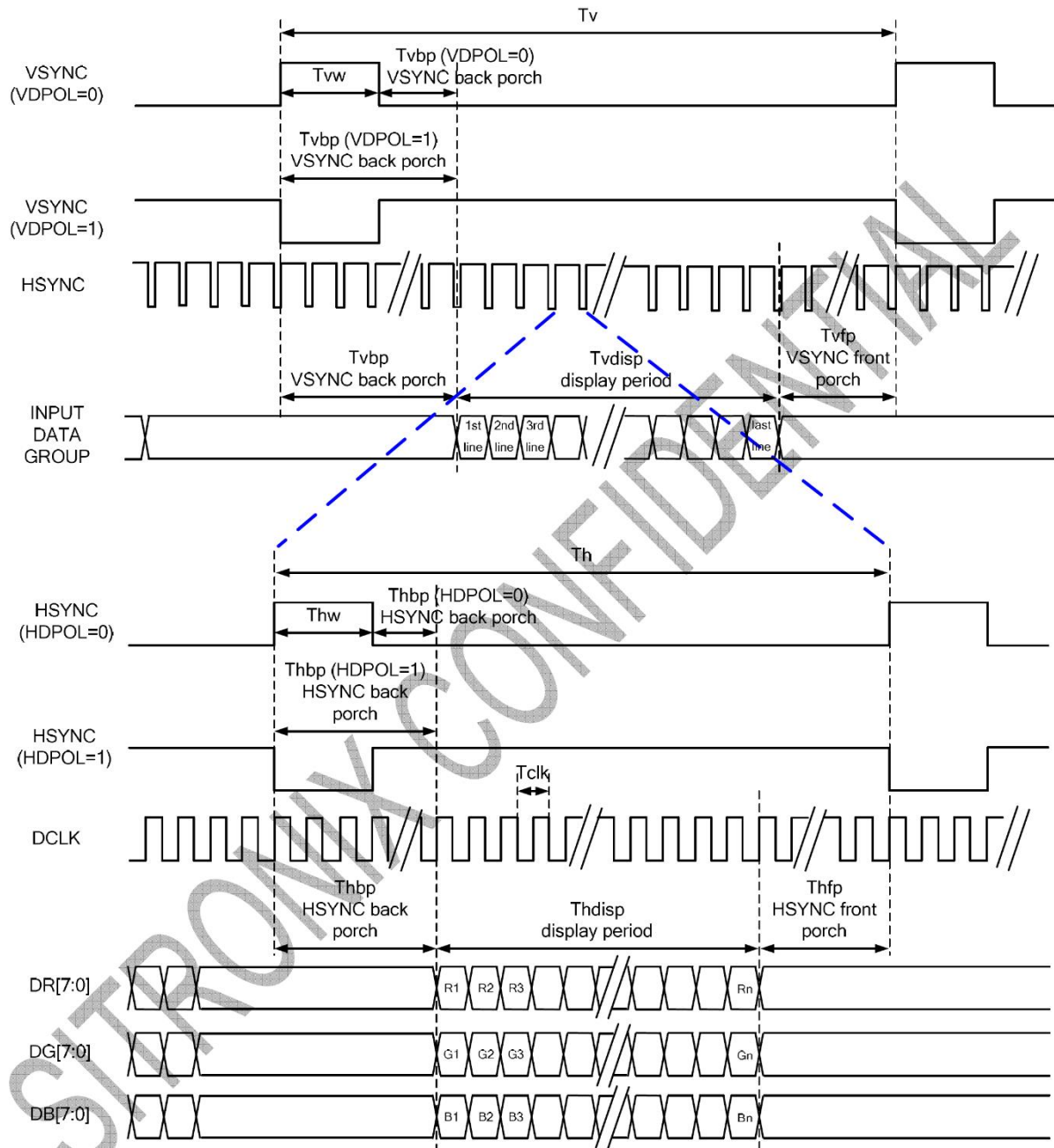
Write Mode



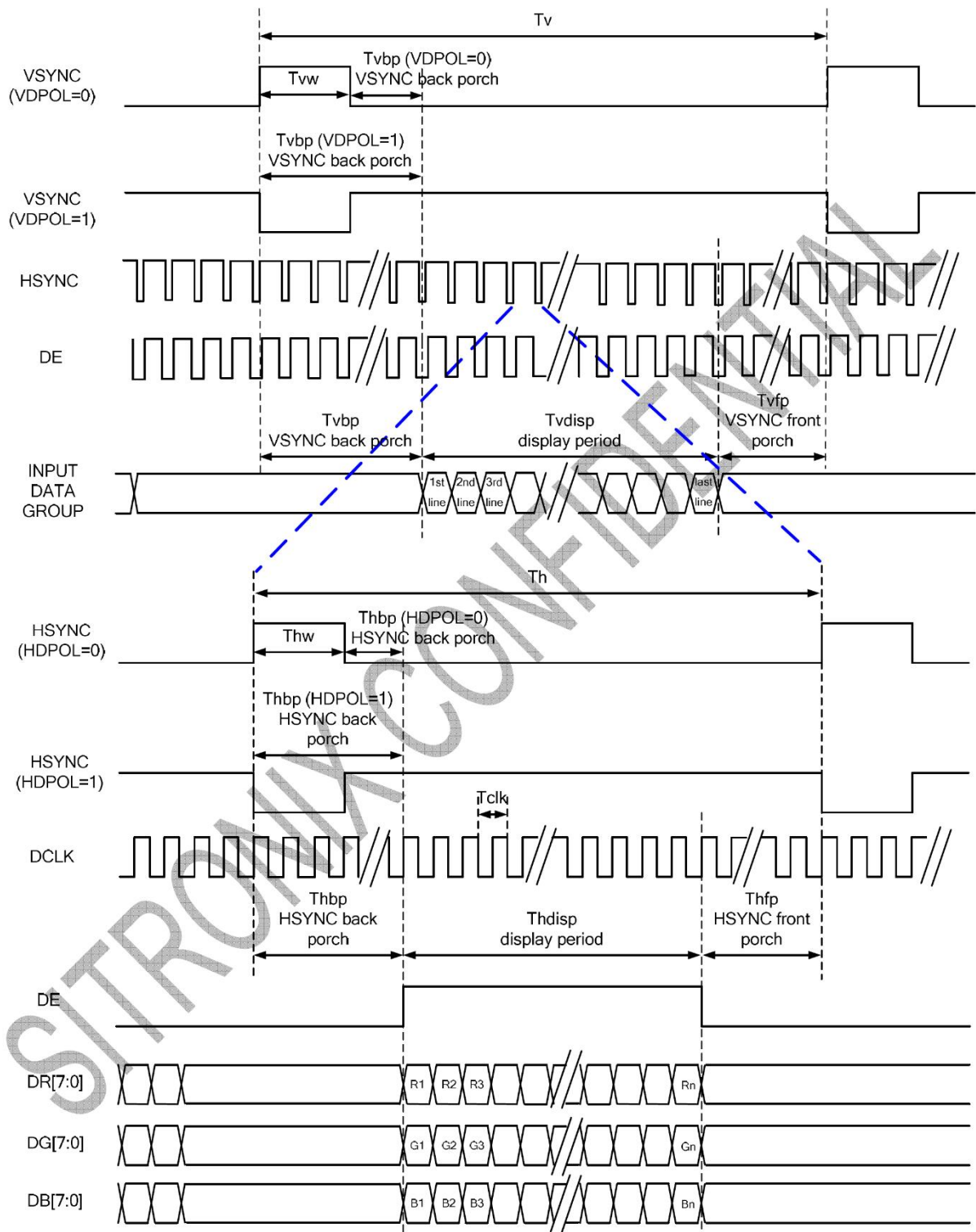
- Each serial command consists of 16 bits of data which is loaded one bit a time at the rising edge of serial clock SCL.
- Command loading operation starts from the falling edge of CS and is completed at the next rising edge of CS.
- The serial control block is operational after power on reset, but commands are established by the VSYNC signal. If command is transferred multiple times for the same register, the last command before the VSYNC signal is valid.
- If less than 16 bits of SCL are input while CS is low, the transferred data is ignored.
- If 16 bits or more of SCL are input while CS is low, the previous 16 bits of transferred data before then rising edge of CS pulse are valid data.
- Serial block operates with the SCL clock
- Serial data can be accepted in the power save mode.
- After power on reset or GRB reset, it is required 100ms delay to begin SPI communication.

## 8.2 RGB Interface

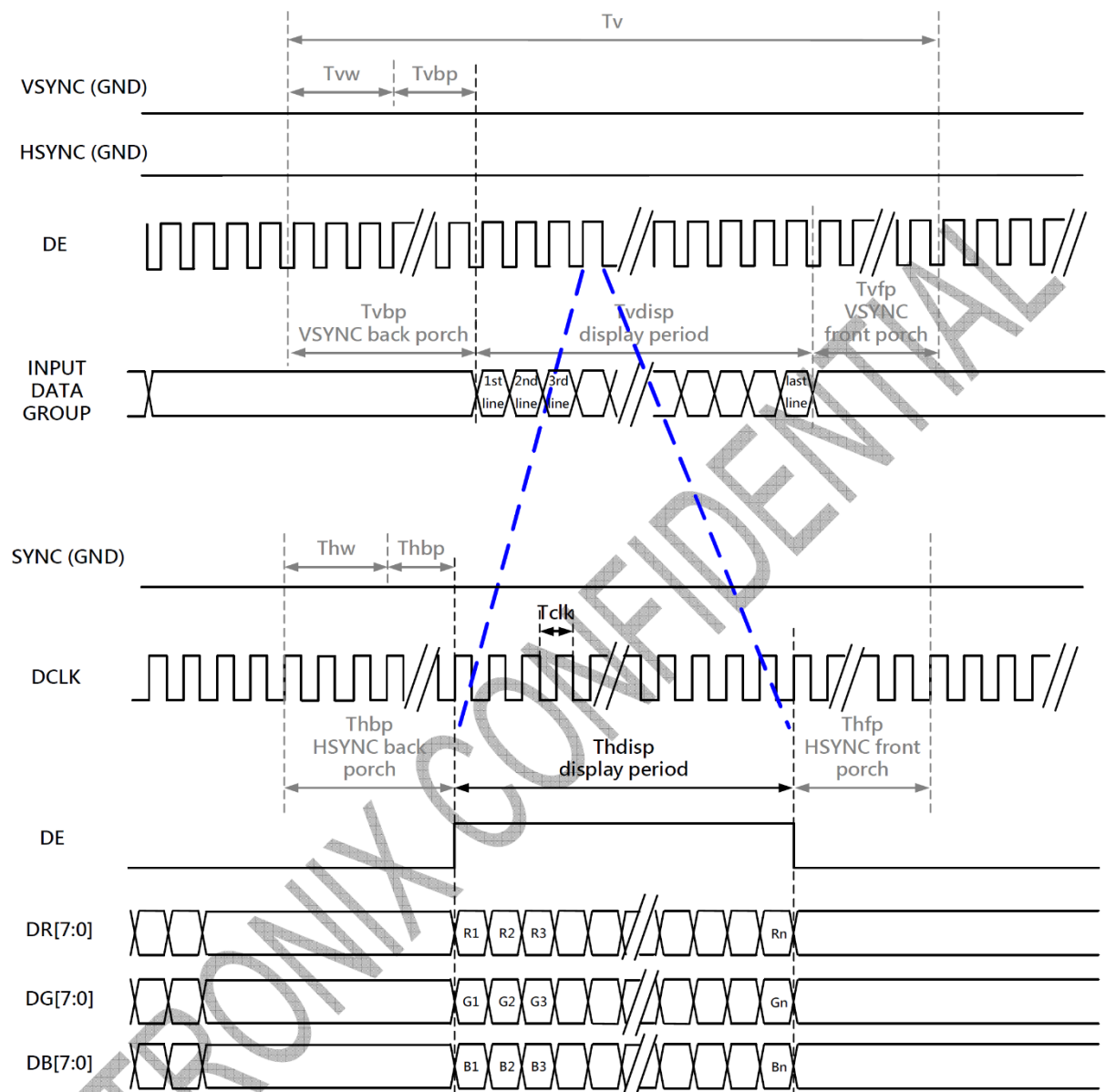
### 8.2.1 SYNC Mode



## 8.2.2 SYNC-DE Mode



8.2.3 DE Mode



RGB Mode Selection Table	DCLK	HSYNC	VSYNC	DE
SYNC - DE Mode	Input	Input	Input	Input
SYNC Mode	Input	Input	Input	GND
DE Mode	Input	GND	GND	Input

Note: "Input" means these signals are driven by host side.

## 8.2.4 Parallel 24-bit RGB Input Timing Table

Parallel 24-bit RGB Input Timing (PVDD=VDD=VDDI= 3.3V, AGND= 0V, TA=25°C)

Serial 8-bit RGB Input Timing Table							
Item		Symbol	Min.	Typ.	Max.	Unit	Remark
DCLK Frequency		Fclk	5	6	8	MHz	
DCLK Period		Tclk	125	167	200	ns	
HSYNC	Period Time	Th	325	371	438	DCLK	
	Display Period	Thdisp		320		DCLK	SYNC mode back porch control by H_BLANKING[7:0] setting Thbp= H_BLANKING[7:0]
	Back Porch	Thbp	3	43	43	DCLK	
	Front Porch	Thfp	2	8	75	DCLK	
	Pulse Width	Thw	2	4	43	DCLK	
VSYNC	Period Time	Tv	244	260	289	HSYNC	
	Display Period	Tvdisp		240		HSYNC	SYNC mode back porch control by V_BLANKING[7:0] setting Tvbp= V_BLANKING[7:0]
	Back Porch	Tvbp	2	12	12	HSYNC	
	Front Porch	Tvfp	2	8	37	HSYNC	
	Pulse Width	Tvw	2	4	12	HSYNC	

Note:

It is necessary to keep Tvbp =12 and Thbp =43 in sync mode. DE mode is unnecessary to keep it.



## 8.2.5 Serial 8-bit RGB Input Timing Table

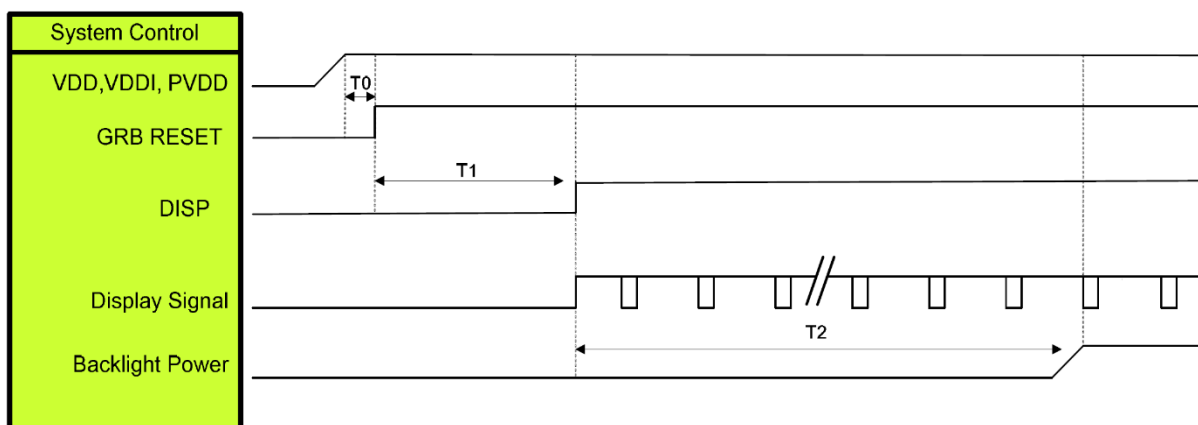
Serial 8-bit RGB Input Timing (PVDD=VDD=VDDI= 3.3V, AGND= 0V, TA=25°C)

Serial 8-bit RGB Input Timing Table						
Item	Symbol	Min.	Typ.	Max.	Unit	Remark
DCLK Frequency	Fclk	15	18	21	MHz	
DCLK Period	Tclk	47	55	66	ns	
HSYNC	Period Time	Th	965	1011	1078	DCLK
	Display Period	Thdisp		960		DCLK SYNC mode back porch control by H_BLANKING[7:0] setting Thbp= H_BLANKING[7:0]
	Back Porch	Thbp	3	43	43	DCLK
	Front Porch	Thfp	2	8	75	DCLK
	Pulse Width	Thw	2	4	43	DCLK
VSYNC	Period Time	Tv	244	260	289	HSYNC
	Display Period	Tvdisp		240		HSYNC SYNC mode back porch control by V_BLANKING[7:0] setting Tvbp= V_BLANKING[7:0]
	Back Porch	Tvbp	2	12	12	HSYNC
	Front Porch	Tvfp	2	8	37	HSYNC
	Pulse Width	Tvw	2	4	12	HSYNC

Note:

It is necessary to keep Tvbp =12 and Thbp =43 in sync mode. DE mode is unnecessary to keep it.

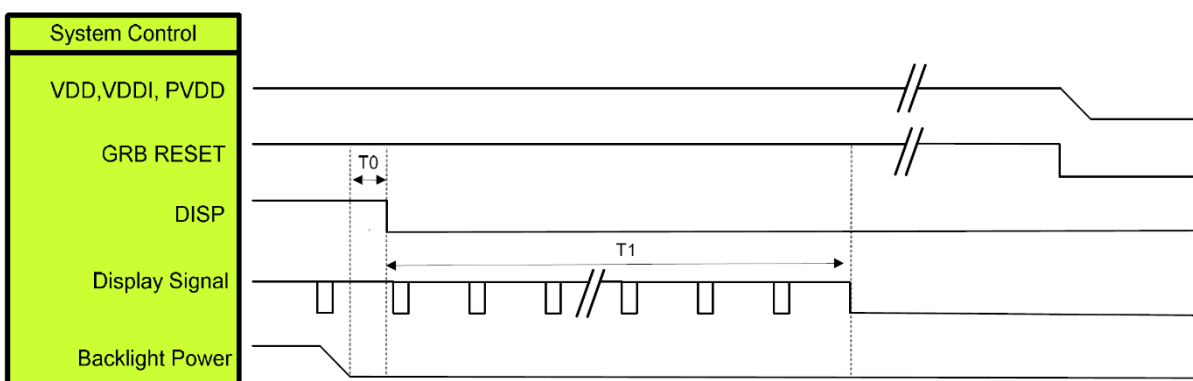
### 8.3 Power on sequence



Symbol	Description	Min. Time	Unit
T0	System power stability to GRB RESET signal	0	ms
T1	GRB RESET= "High" to DISP="High"	10	ms
T2	Display Signal output to Backlight Power on	250	ms

Note: Display signal: DCLK; VSYNC; HSYNC; DE; DR[7:0]; DG[7:0]; DB[7:0]

### 8.4 Power off sequence



Symbol	Description	Min. Time	Unit
T0	Backlight Power off to DISP="Low"	5	ms
T1	DISP="Low" to IC internal voltage discharge complete	80	ms

Note: Display signal: DCLK; VSYNC; HSYNC; DE; DR[7:0]; DG[7:0]; DB[7:0]

## 9 Optical specification

### 9.1 Optical characteristic of the LCD

Item		Symbol	Condition	Min.	Typ.	Max.	Unit	Note
Contrast		CR	$\Theta=0$ Normal viewing angle	640	800	—		(1)(2)
Response time		$T_R+T_F$		—	30	40	msec	(1)(3)
White luminance (Center)		$Y_L$		800	1000	—	cd/m <sup>2</sup>	(1)(4)
Color chromaticity (CIE1931)	White	$W_x$		-0.06	0.317	+0.06		(1)(4)
		$W_y$			0.339			
	Red	$R_x$			0.646			
		$R_y$			0.332			
	Green	$G_x$			0.323			
		$G_y$			0.567			
	Blue	$B_x$			0.134			
		$B_y$			0.121			
Viewing angle	Hor.	$\Theta_L$	CR>10	75	85	—		
		$\Theta_R$		75	85	—		
	Ver.	$\Theta_U$		75	85	—		
		$\Theta_D$		75	85	—		

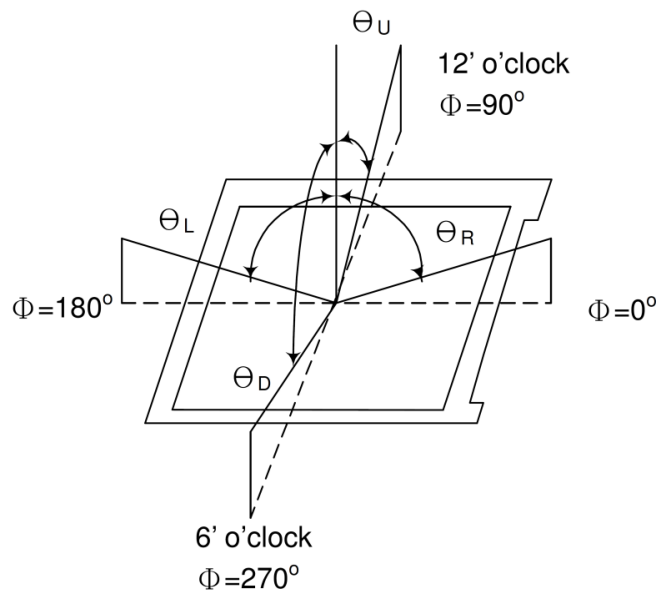
#### Measuring Condition

- Measuring surrounding : dark room
- Ambient temperature : 25±2°C
- 15min. warm-up time.

## Measuring Equipment

Measuring Equipment is BM-7

Note 1 Definition of viewing angle

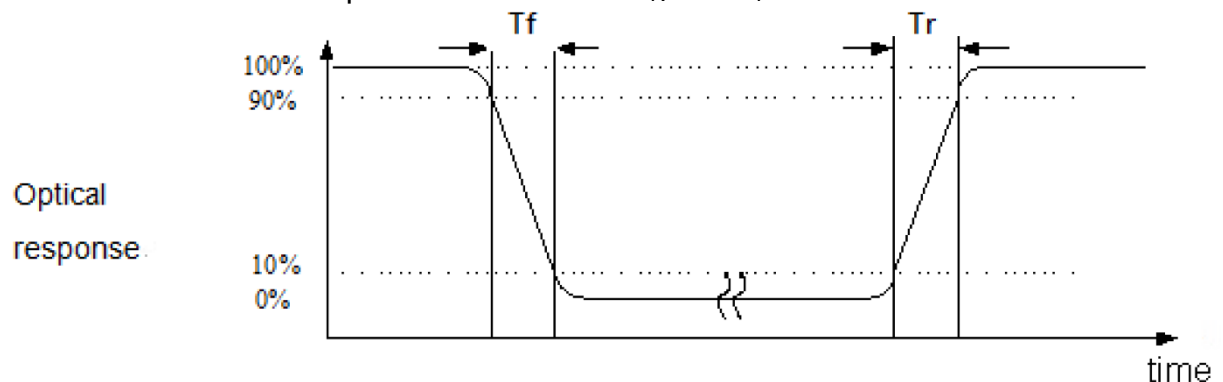


Note 2: Definition of contrast ratio (CR)

Measured at the center point of panel

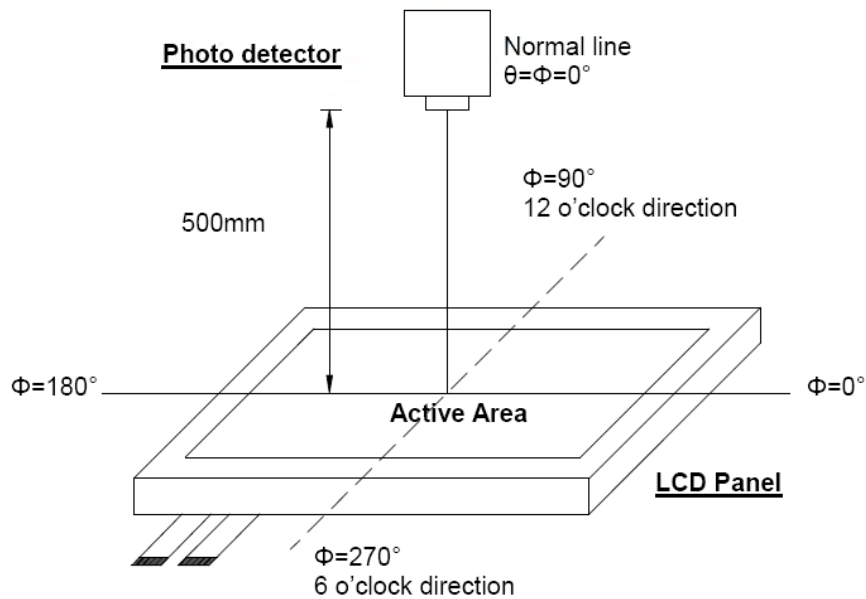
$$CR = \frac{\text{Luminance with all pixels white}}{\text{Luminance with all pixels black}}$$

Note 3: Definition of response time: Sum of  $T_R$  and  $T_F$



Note 4: Definition of optical measurement setup

The optical characteristics should be measured in dark room. After 30 minutes operation, the optical properties are measured at the center point of the LCD screen. (Response time is measured by Photo detector TOPCON BM-7, other items are measured by BM-5A/Field of view:  $1^\circ$  / Height: 500mm.)



## 10 Reliability Test

The reliability test items and its conditions are shown below.

Test Item	Test Conditions	Note
High Temperature Operation	85±3°C , t=240 hrs	
Low Temperature Operation	-30±3°C , t=240 hrs	
High Temperature Storage	85±3°C , t=240 hrs	1,2
Low Temperature Storage	-30±3°C , t=240 hrs	1,2
Storage at High Temperature and Humidity	60°C, 90% RH , 240 hrs	1,2
Vibration Test (Packing)	Sweep frequency : 10~55~10 Hz/1min Amplitude : 0.75mm Test direction : X.Y.Z/3 axes Duration : 30 min/each axis	2

Note 1: Condensation of water is not permitted on the module.

Note 2: The module should be inspected after 1 hour storage in normal conditions (15-35°C, 45-65%RH).

Note 3: The module shouldn't be tested more than one condition, and all the test conditions are independent.

Note 4: All the reliability tests should be done without protective film on the module.

## 11 USE PRECAUTIONS

### 11.1 Handling Precautions

- 11.1.1. The display panel is made of glass. Do not subject it to a mechanical shock by dropping it from a high place, etc.
- 11.1.2. If the display panel is damaged and the liquid crystal substance inside it leaks out, be sure not to get any in your mouth, if the substance comes into contact with your skin or clothes, promptly wash it off using soap and water.
- 11.1.3. Do not apply excessive force to the display surface or the adjoining areas since this may cause the color tone to vary.
- 11.1.4. The polarizer covering the display surface of the LCD module is soft and easily scratched. Handle this polarizer carefully.
- 11.1.5. If the display surface is contaminated, breathe on the surface and gently wipe it with a soft dry cloth. If still not completely clear, moisten cloth with one of the following solvents:
  - Isopropyl alcohol
  - Ethyl alcoholSolvents other than those mentioned above may damage the polarizer. Especially, do not use the following:
  - Water
  - Ketone
  - Aromatic solvents
- 11.1.6. Do not attempt to disassemble the LCD Module.
- 11.1.7. If the logic circuit power is off, do not apply the input signals.
- 11.1.8. To prevent destruction of the elements by static electricity, be careful to maintain an optimum work environment.
  - 11.1.8.1. Be sure to ground the body when handling the LCD Modules.
  - 11.1.8.2. Tools required for assembly, such as soldering irons, must be properly ground.
  - 11.1.8.3. To reduce the amount of static electricity generated, do not conduct assembly and other work under dry conditions.
  - 11.1.8.4. The LCD Module is coated with a film to protect the display surface. Be care when peeling off this protective film since static electricity may be generated.

## **11.2 Storage Precautions**

- 11.2.1. When storing the LCD modules, avoid exposure to direct sunlight or to the light of fluorescent lamps.
- 12.2.2. The LCD modules should be stored under the storage temperature range. If the LCD modules will be stored for a long time, the recommend condition is:  
Temperature : 0°C ~ 40°C Relatively humidity: ≤80%
- 11.2.3. The LCD modules should be stored in the room without acid, alkali and harmful gas.

## **11.3 Transportation Precautions**

The LCD modules should be no falling and violent shocking during transportation, and also should avoid excessive press, water, damp and sunshine.

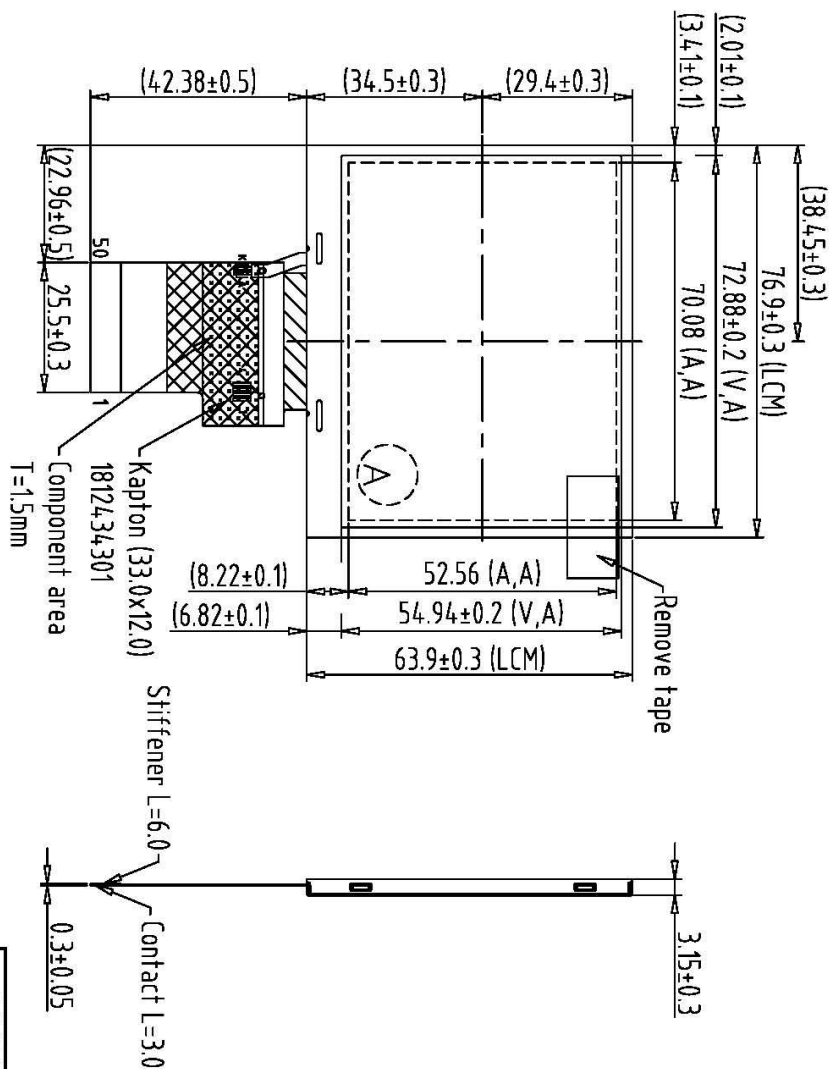
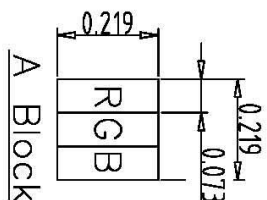
## **11.4 Other**

- 11.4.1. AMIPRE will provide one year warrantee for all products and three months warrantee for all repairing products.
- 11.4.2. Do not keep the LCD at the same display pattern continually. The residual image will happen and it will damage the LCD. Please use screen saver.



## 12 Mechanical Dimensions

1	LED_K	26	G0
2	LED_K	27	R7
3	LED_A	28	R6
4	LED_A	29	R5
5	NC	30	R4
6	RESET	31	R3
7	SPENA	32	R2
8	SPCK	33	R1
9	SPDA	34	R0
10	NC	35	CLK
11	B7	36	HSYNC
12	B6	37	VSYNC
13	B5	38	DEN
14	B4	39	VDD
15	B3	40	VDD
16	B2	41	VDD
17	B1	42	VDD
18	B0	43	NC
19	G7	44	NC
20	G6	45	NC
21	G5	46	NC
22	G4	47	Shutdown
23	G3	48	NC
24	G2	49	GND
25	G1	50	GND



**Note:**

1. Unless indicated, Tolerance " $\pm 0.3$ "
2. UV Glue For OLB Protection.

[illegible]

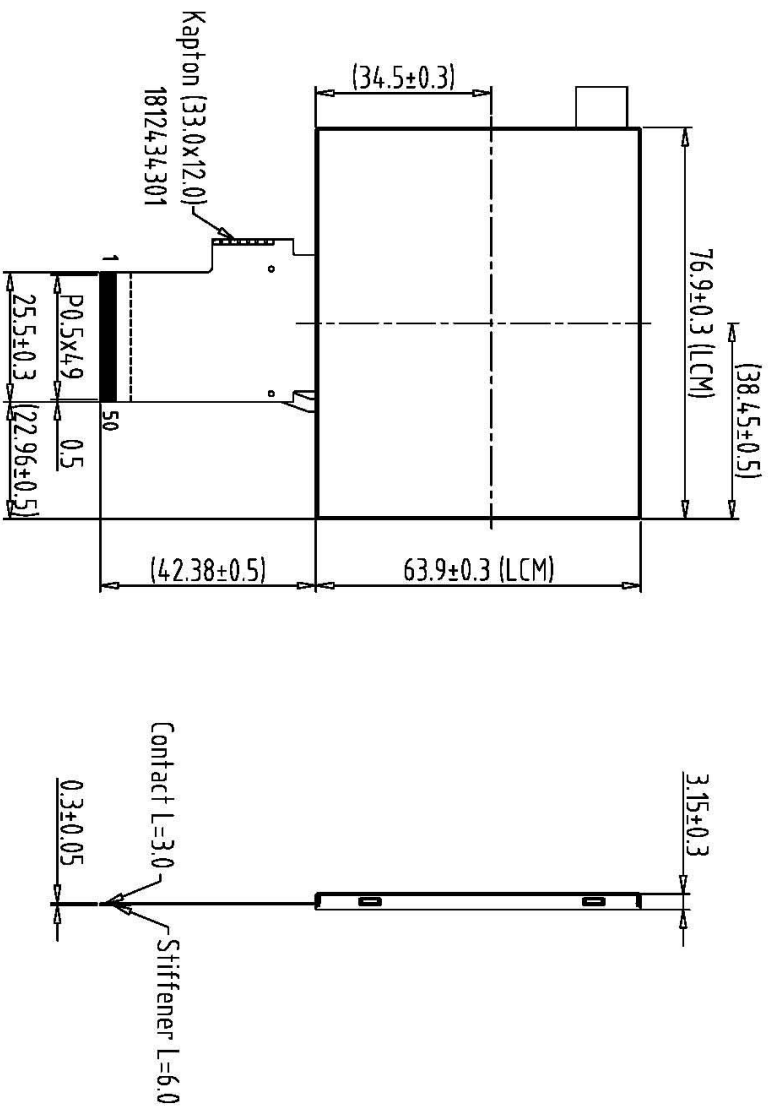
REV	REVISION RECORD	DATE MADE
0	NEW RELEASE	10-05-18 SNOV
1	Rename TFS20240-149-0 to 32024010-60	01-14-18 SNOV

REV	REVISION RECORD	DATE	NAME
0	NEW RELEASE	10-05-18	SNOW
1	Rename TF320240-149-0 to 320240LQ-60	10-04-18	SNOW

1	LED_K	26	G0
2	LED_K	27	R7
3	LED_A	28	R6
4	LED_A	29	R5
5	NC	30	R4
6	RESET	31	R3
7	SPENA	32	R2
8	SPCK	33	R1
9	SPDA	34	R0
10	NC	35	CLK
11	B7	36	HSYNC
12	B6	37	VSXNC
13	B5	38	DEN
14	B4	39	VDD
15	B3	40	VDD
16	B2	41	VDD
17	B1	42	VDD
18	B0	43	NC
19	G7	44	NC
20	G6	45	NC
21	G5	46	NC
22	G4	47	Shutdown
23	G3	48	NC
24	G2	49	GND
25	G1	50	GND

Note:

1. Unless indicated, Tolerance "±0.3"
2. UV Glue For OLB Protection.



Back View

1	320240LQ-50	7		TOLERANCE GRADE(±)	A	B	DIM.	MM	DWN.	SNOW	DATE	TITLE
2	TF320240-149-0	8					IE NO.		CHEK.		DATE	320240LQ-60
3		9					PARTS NO.	LCM-1	APPD.		DATE	(3.5") IPS
4		10										
5		11										
6		12										

AMPIRE	晶采光电科技
320240LQ-60	(3.5") IPS
DWG. NO.	*181039MA
SHEET	1 OF 1