



# Product Specification

AU OPTRONICS CORPORATION

G150XTN06.B

( ) Preliminary Specifications

(v) Final Specifications

Module	15" inch Color TFT-LCD
Model Name	G150XTN06.B

<div><div>Customer</div><div>Date</div><div></div></div> <div><div>Checked &amp; Approved by</div><div>Date</div><div></div></div>	<div><div>Approved by</div><div>Date</div><div>Sean Lin2021.10.20</div></div> <div><div>Prepared by</div><div>Date</div><div>Ginger Lin2021.10.20</div></div> <div>General Display Business Unit / AUO Display Plus corporation</div>
Customer's sign back page	

## Contents

2.1 Display Characteristics .....	3
2.1 Display Characteristics .....	3
<b>1. Operating Precautions .....</b>	<b>4</b>
<b>2. General Description .....</b>	<b>5</b>
2.1 Display Characteristics .....	5
2.2 Optical Characteristics .....	6
<b>3. Functional Block Diagram .....</b>	<b>9</b>
<b>4. Absolute Maximum Ratings .....</b>	<b>10</b>
4.1 Absolute Ratings of TFT LCD Module .....	10
4.2 Absolute Ratings of Environment .....	10
<b>5. Electrical Characteristics .....</b>	<b>11</b>
5.1 TFT LCD Module .....	11
5.1.1 Power Specification .....	11
5.2 Backlight Unit .....	13
<b>6. Signal Characteristic .....</b>	<b>14</b>
6.1 Pixel Format Image .....	14
6.2 Scanning Direction .....	14
6.3 Signal Description .....	15
6.4 The Input Data Format .....	16
6.5 Interface Timing .....	17
6.6 Power ON/OFF Sequence .....	18
<b>7. Connector &amp; Pin Assignment .....</b>	<b>19</b>
7.1 TFT LCD Module: LVDS Connector .....	19
7.2 Backlight Unit: LED Driver Connector .....	21
7.3 LED Connector Pin Assignment .....	21
<b>8. Reliability Test Criteria .....</b>	<b>22</b>
<b>9. Mechanical Characteristics .....</b>	<b>23</b>
9.1 LCM Outline Dimension (Front View and back view) .....	23
<b>10. Label and Packaging .....</b>	<b>25</b>
10.1 Shipping Label (on the rear side of TFT-LCD display) .....	25
10.2 Carton Package .....	25
10.3 Palletizing .....	26
<b>11 Safety .....</b>	<b>27</b>
11.1 Sharp Edge Requirements .....	27
11.2 Materials .....	27
11.3 Capacitors .....	27
11.4 National Test Lab Requirement .....	27

## Record of Revision

Version and Date	Page	Old description	New Description																																																																
0.0 2018/09/03	All	First Edition																																																																	
0.1 2018/09/20	5	2.1 Display Characteristics Surface Treatment – Anti-Glare	2.1 Display Characteristics Surface Treatment – Anti-Reflection																																																																
1.0 2019/12/20	All	Final Edition																																																																	
2.0 2021/10/20	13	<div>5.2.1 Parameter guideline for LED</div> <table><thead><tr><th>Symbol</th><th>Parameter</th><th>Min</th><th>Typ</th><th>Max</th><th>Unit</th></tr></thead><tbody><tr><td rowspan="5">F<sub>PWM</sub></td><td>PWM Dimming Frequency</td><td>200</td><td>-</td><td>20k</td><td>Hz</td></tr><tr><td>High Voltage</td><td>2.5</td><td>3.3</td><td>5.5</td><td>Volt</td></tr><tr><td>Low Voltage</td><td>-</td><td>-</td><td>0.7</td><td>Volt</td></tr><tr><td>Dimming Duty Cycle, 200Hz~5KHz</td><td>5</td><td>-</td><td>100</td><td>%</td></tr><tr><td>Dimming Duty Cycle, 5KHz~20KHz</td><td>5</td><td>-</td><td>100</td><td>%</td></tr></tbody></table>	Symbol	Parameter	Min	Typ	Max	Unit	F <sub>PWM</sub>	PWM Dimming Frequency	200	-	20k	Hz	High Voltage	2.5	3.3	5.5	Volt	Low Voltage	-	-	0.7	Volt	Dimming Duty Cycle, 200Hz~5KHz	5	-	100	%	Dimming Duty Cycle, 5KHz~20KHz	5	-	100	%	<div>5.2.1 Parameter guideline for LED</div> <table><thead><tr><th>Symbol</th><th>Parameter</th><th>Min</th><th>Typ</th><th>Max</th><th>Units</th></tr></thead><tbody><tr><td rowspan="5">F<sub>PWM</sub></td><td>PWM Dimming Frequency</td><td>200</td><td>-</td><td>20k</td><td>Hz</td></tr><tr><td>High Voltage</td><td>2.5</td><td>3.3</td><td>5.5</td><td>Volt</td></tr><tr><td>Low Voltage</td><td>-</td><td>-</td><td>0.7</td><td>Volt</td></tr><tr><td>Dimming Duty Cycle, 200Hz~5KHz</td><td>5</td><td>-</td><td>100</td><td>%</td></tr><tr><td>Dimming Duty Cycle, 5KHz~20KHz</td><td>15</td><td>-</td><td>100</td><td>%</td></tr></tbody></table> <div>*Updated PWM diming vs. frequency spec due to EC to new LED driver IC.</div>	Symbol	Parameter	Min	Typ	Max	Units	F <sub>PWM</sub>	PWM Dimming Frequency	200	-	20k	Hz	High Voltage	2.5	3.3	5.5	Volt	Low Voltage	-	-	0.7	Volt	Dimming Duty Cycle, 200Hz~5KHz	5	-	100	%	Dimming Duty Cycle, 5KHz~20KHz	15	-	100	%
Symbol	Parameter	Min	Typ	Max	Unit																																																														
F <sub>PWM</sub>	PWM Dimming Frequency	200	-	20k	Hz																																																														
	High Voltage	2.5	3.3	5.5	Volt																																																														
	Low Voltage	-	-	0.7	Volt																																																														
	Dimming Duty Cycle, 200Hz~5KHz	5	-	100	%																																																														
	Dimming Duty Cycle, 5KHz~20KHz	5	-	100	%																																																														
Symbol	Parameter	Min	Typ	Max	Units																																																														
F <sub>PWM</sub>	PWM Dimming Frequency	200	-	20k	Hz																																																														
	High Voltage	2.5	3.3	5.5	Volt																																																														
	Low Voltage	-	-	0.7	Volt																																																														
	Dimming Duty Cycle, 200Hz~5KHz	5	-	100	%																																																														
	Dimming Duty Cycle, 5KHz~20KHz	15	-	100	%																																																														
2.0 2021/10/20	21	<div>7.2 Backlight Unit: LED Driver Connector</div> <table><thead><tr><th>Connector Name / Designation</th><th>LED Driver Connector</th></tr></thead><tbody><tr><td>Manufacturer</td><td>ENTERY or compatible</td></tr><tr><td>Connector Model Number</td><td>3808K-F06N-12R or compatible</td></tr><tr><td>Mating Model Number</td><td>H208K-D06N-22B or compatible</td></tr></tbody></table>	Connector Name / Designation	LED Driver Connector	Manufacturer	ENTERY or compatible	Connector Model Number	3808K-F06N-12R or compatible	Mating Model Number	H208K-D06N-22B or compatible	<div>7.2 Backlight Unit: LED Driver Connector</div> <table><thead><tr><th>Connector Name / Designation</th><th>LED Driver Connector</th></tr></thead><tbody><tr><td>Manufacturer</td><td>ENTERY or STM or compatible</td></tr><tr><td>Connector Model Number</td><td>3808K-F06N-12R or MSB24038P6D or compatible</td></tr><tr><td>Mating Model Number</td><td>H208K-D06N-22B or P24038P6 or compatible</td></tr></tbody></table>	Connector Name / Designation	LED Driver Connector	Manufacturer	ENTERY or STM or compatible	Connector Model Number	3808K-F06N-12R or MSB24038P6D or compatible	Mating Model Number	H208K-D06N-22B or P24038P6 or compatible																																																
Connector Name / Designation	LED Driver Connector																																																																		
Manufacturer	ENTERY or compatible																																																																		
Connector Model Number	3808K-F06N-12R or compatible																																																																		
Mating Model Number	H208K-D06N-22B or compatible																																																																		
Connector Name / Designation	LED Driver Connector																																																																		
Manufacturer	ENTERY or STM or compatible																																																																		
Connector Model Number	3808K-F06N-12R or MSB24038P6D or compatible																																																																		
Mating Model Number	H208K-D06N-22B or P24038P6 or compatible																																																																		

## 1. Operating Precautions

- 1) Since front polarizer is easily damaged, please be cautious and not to scratch it.
- 2) Be sure to turn off power supply when inserting or disconnecting from input connector.
- 3) Wipe off water drop immediately. Long contact with water may cause discoloration or spots.
- 4) When the panel surface is soiled, wipe it with absorbent cotton or soft cloth.
- 5) Since the panel is made of glass, it may be broken or cracked if dropped or bumped on hard surface.
- 6) Since CMOS LSI is used in this module, take care of static electricity and insure human earth when handling.
- 7) Do not open nor modify the module assembly.
- 8) Do not press the reflector sheet at the back of the module to any direction.
- 9) In case if a module has to be put back into the packing container slot after it was taken out from the container, do not press the center of the LED Reflector edge. Instead, press at the far ends of the LED Reflector edge softly. Otherwise the TFT Module may be damaged.
- 10) At the insertion or removal of the Signal Interface Connector, be sure not to rotate nor tilt the Interface Connector of the TFT Module.
- 11) TFT-LCD Module is not allowed to be twisted & bent even force is added on module in a very short time. Please design your display product well to avoid external force applying to module by end-user directly.
- 12) Small amount of materials without flammability grade are used in the TFT-LCD module. The TFT-LCD module should be supplied by power complied with requirements of Limited Power Source (IEC60950-1 or UL60950-1), or be applied exemption.
- 13) Severe temperature condition may result in different luminance, response time.
- 14) Continuous operating TFT-LCD Module under high temperature environment may accelerate LED light bar exhaustion and reduce luminance dramatically.
- 15) The data on this specification sheet is applicable when TFT-LCD module is placed in landscape position.
- 16) Continuous displaying fixed pattern may induce image sticking. It's recommended to use screen saver or moving content periodically if fixed pattern is displayed on the screen.

## 2. General Description

G150XTN06.B is a Color Active Matrix Liquid Crystal Display composed of a TFT-LCD display, a driver circuit, and a backlight system. The screen format is intended to support XGA (1024(H) x 768(V)) screen and 16.2M or 262K colors. All input signals are LVDS interface compatible. All design rules of this module can correspond to PSWG standard.

G150XTN06.B is designed for industrial display applications.

### 2.1 Display Characteristics

The following items are characteristics summary on the table under 25 °C condition:

Items	Unit	Specifications
Screen Diagonal	[inch]	15
Active Area	[mm]	304.128(H) x 228.096(V)
Pixels H x V		1024x3(RGB) x 768
Pixel Pitch	[mm]	0.297 x 0.297
Pixel Arrangement		R.G.B. Vertical Stripe
Display Mode		TN, Normally White
Nominal Input Voltage VDD	[Volt]	3.3 typ.
Typical Power Consumption	[Watt]	12.23W
Weight	[Grams]	1000g (max.)
Physical Size	[mm]	326.5(H)x 253.5(V) x 10.0(D) (max.)
Electrical Interface		LVDS
Surface Treatment		Anti-Reflection,3H
Support Color		16.2M/262K
Temperature Range Operating Storage (Non-Operating)	[°C] [°C]	-30 to +70 -30 to +80
RoHS Compliance		RoHS Compliance
Light Bar Unit		LED, non-replaceable

## 2. 2 Optical Characteristics

The optical characteristics are measured under stable conditions at 25°C (Room Temperature):

Item	Unit	Conditions	Min.	Typ.	Max.	Note
White Luminance	[cd/m2]		640	800	-	1
Uniformity	%	9 Points	75	80	-	1, 2, 3
Contrast Ratio			400	800	-	4
Cross talk	%		-	1.2	1.5	5
Response Time	[msec]	Rising	-	5.7		6
	[msec]	Falling	-	2.3		
	[msec]	Raising + Falling	-	8		
Viewing Angle	[degree]	Horizontal (Right)	70	80	-	7
	[degree]	CR = 10 (Left)	70	80	-	
	[degree]	Vertical (Upper)	60	70	-	
	[degree]	CR = 10 (Lower)	70	80	-	
Color / Chromaticity Coordinates (CIE 1931)		Red x	0.547	0.597	0.647	
		Red y	0.289	0.339	0.389	
		Green x	0.279	0.329	0.379	
		Green y	0.546	0.596	0.646	
		Blue x	0.104	0.154	0.204	
		Blue y	0.003	0.053	0.103	
		White x	0.263	0.313	0.363	
		White y	0.279	0.329	0.379	
Color Gamut	%	NTSC		60	-	

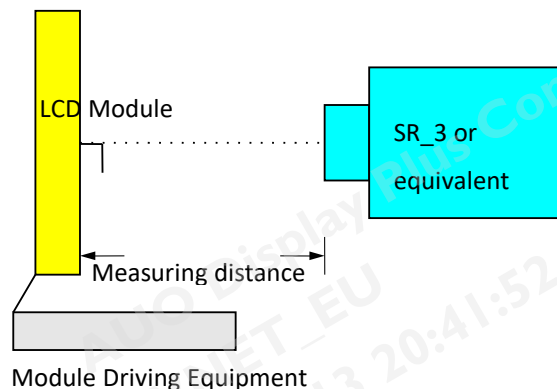
Note 1: Measurement method

Equipment Pattern Generator, Power Supply, Digital Voltmeter, Luminance meter (SR\_3 or equivalent)

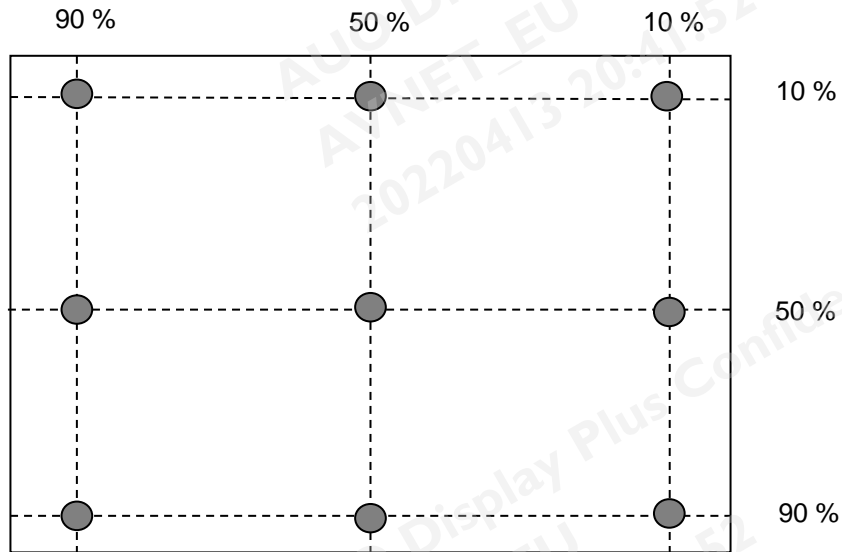
Aperture 1 with 50cm viewing distance

Test Point Center

Environment < 1 lux



Note 2: Definition of 9 points position (Display active area: 304.128(H) x 228.096(V))



Note 3: The luminance uniformity of 9 points is defined by dividing the minimum luminance values by the maximum test point luminance

$$\delta w_9 = \frac{\text{Minimum Brightness of nine points}}{\text{Maximum Brightness of nine points}}$$

Note 4: Definition of contrast ratio (CR):

$$\text{Contrast ratio (CR)} = \frac{\text{Brightness on the "White" state}}{\text{Brightness on the "Black" state}}$$

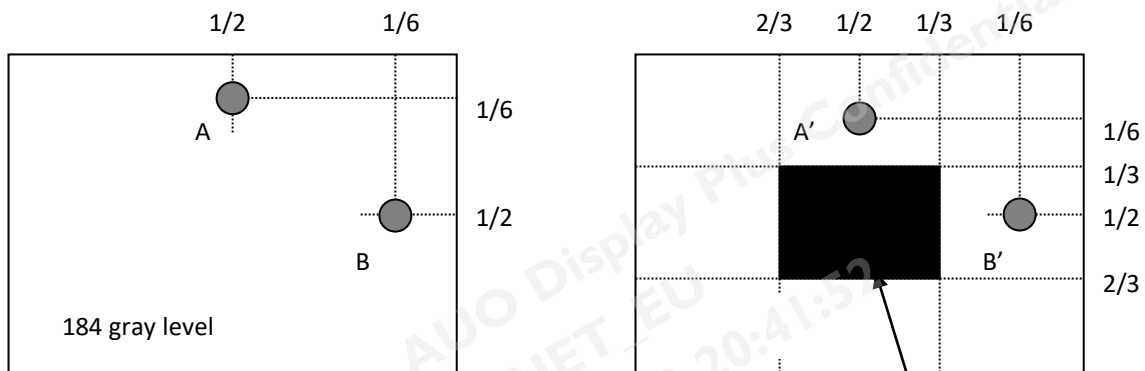
Note 5 : Definition of cross talk (CT)

$$CT = |YB - YA| / YA \times 100 (\%)$$

Where

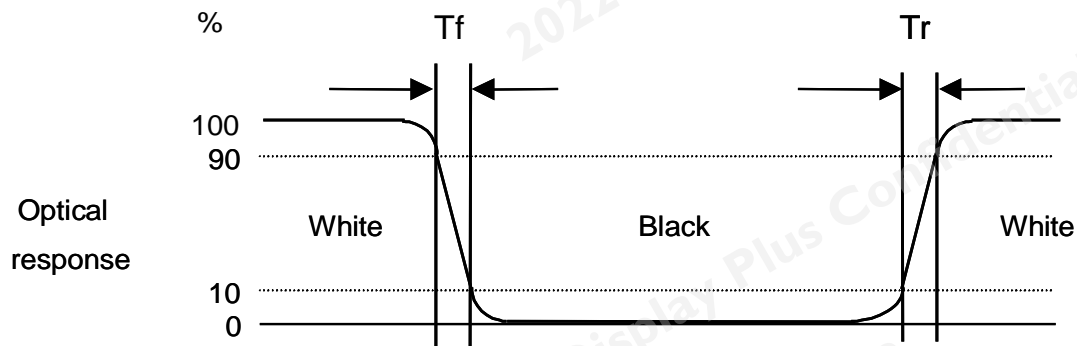
YA = Luminance of measured location without gray level 0 pattern (cd/m2)

YB = Luminance of measured location with gray level 0 pattern (cd/m2)



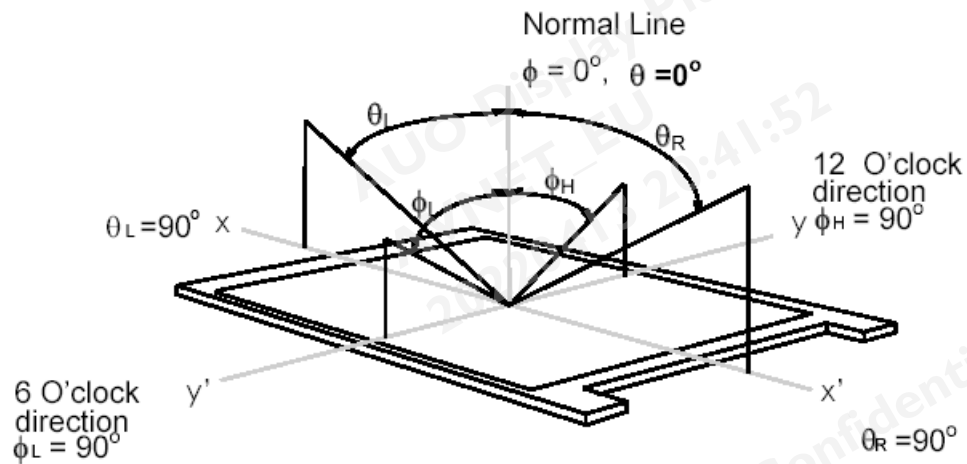
## Note 6: Definition of response time:

The output signals of photo detector are measured when the input signals are changed from “White” to “Black” (falling time) and from “Black” to “White” (rising time), respectively. The response time interval is between 10% and 90% of amplitudes. Please refer to the figure as below.



## Note 7: Definition of viewing angle

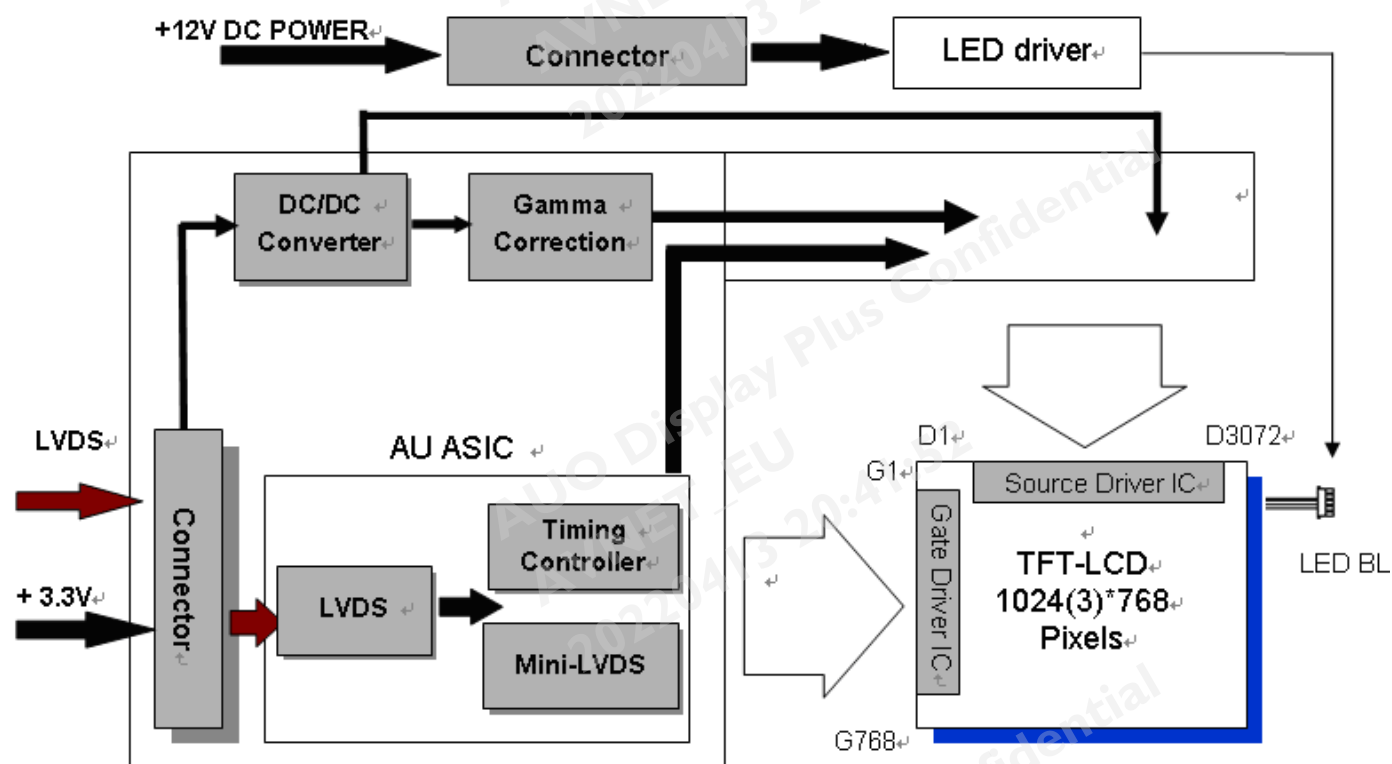
Viewing angle is the measurement of contrast ratio  $\geq 10$ , at the screen center, over a  $180^\circ$  horizontal and  $180^\circ$  vertical range (off-normal viewing angles). The  $180^\circ$  viewing angle range is broken down as below:  $90^\circ$  ( $\theta$ ) horizontal left and right, and  $90^\circ$  ( $\phi$ ) vertical high (up) and low (down). The measurement direction is typically perpendicular to the display surface with the screen rotated to its center to develop the desired measurement viewing angle.





### 3. Functional Block Diagram

The following diagram shows the functional block of the 15inch color TFT/LCD module:



## 4. Absolute Maximum Ratings

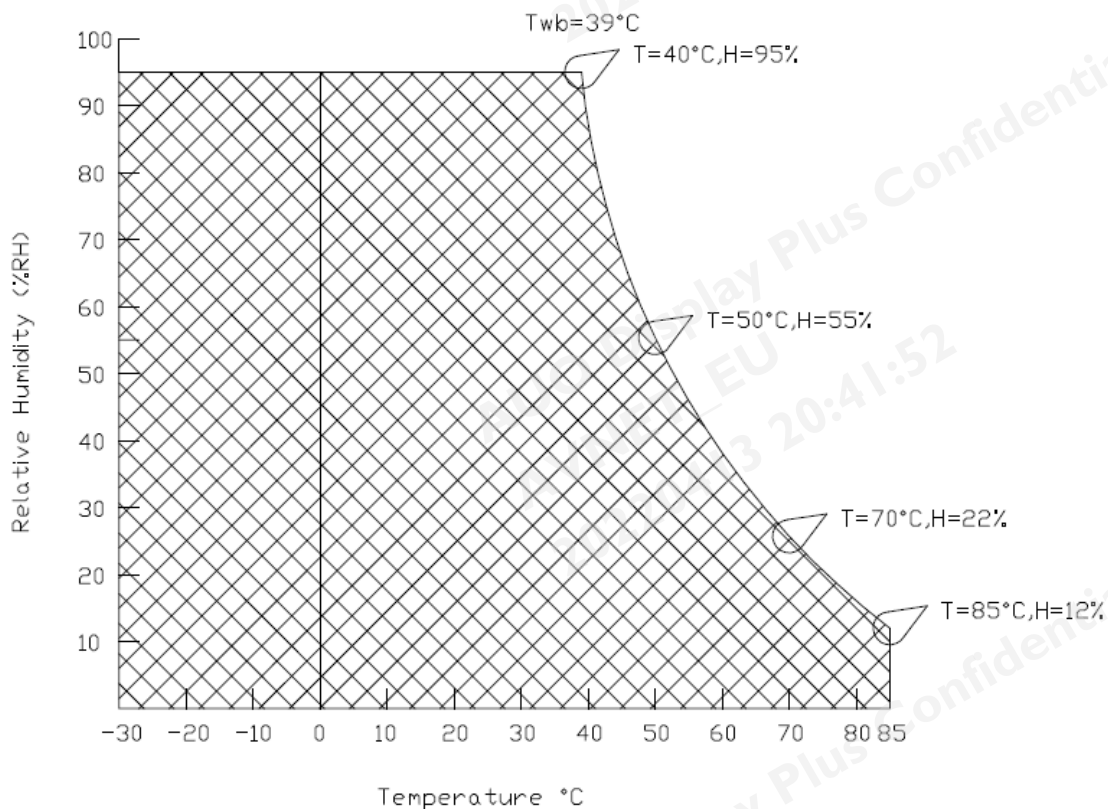
### 4.1 Absolute Ratings of TFT LCD Module

Item	Symbol	Min	Max	Unit
Logic/LCD drive Voltage	Vin	-0.3	+3.6	[Volt]

### 4.2 Absolute Ratings of Environment

Item	Symbol	Min	Max	Unit
Operating Temperature	TOP	-30	+70	[°C]
Operation Humidity	HOP	8	90	[%RH]
Storage Temperature	TST	-30	+80	[°C]
Storage Humidity	HST	8	90	[%RH]

Note: Maximum Wet-Bulb should be 39°C and no condensation.



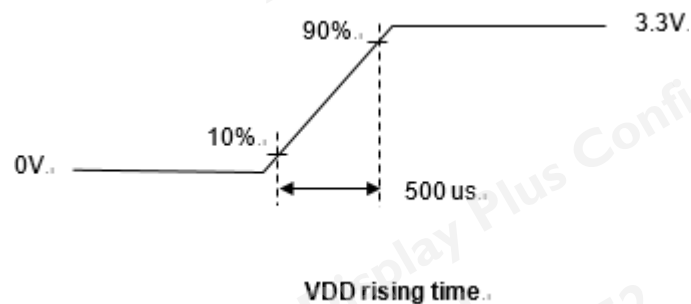
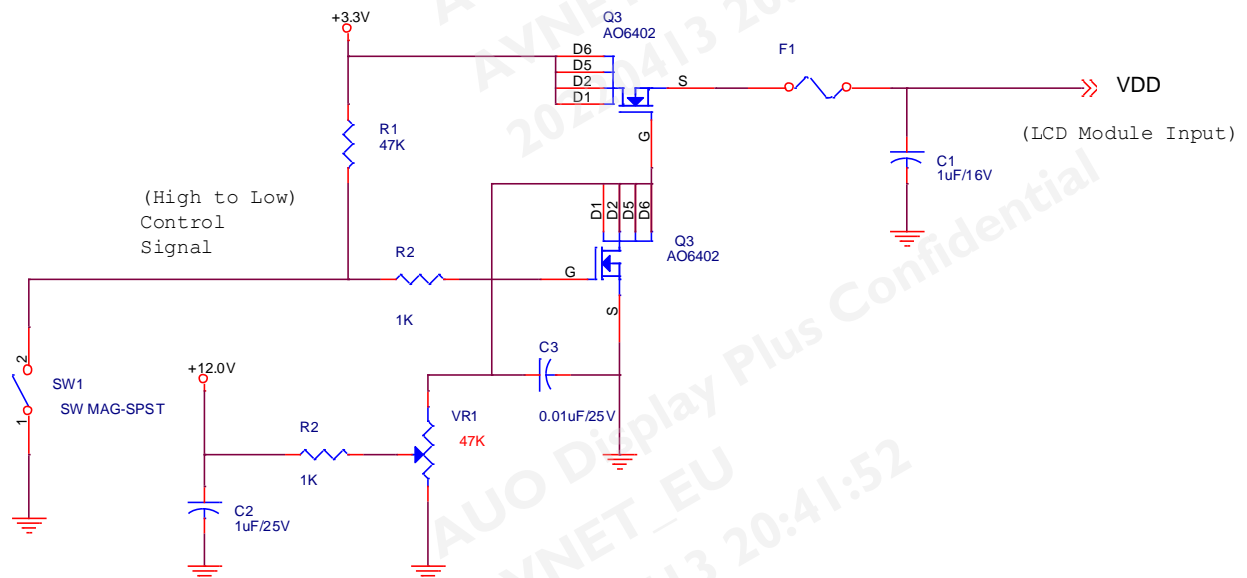
## 5. Electrical Characteristics

### 5.1 TFT LCD Module

#### 5.1.1 Power Specification

Symbol	Parameter	Min	Typ	Max	Units	Remark
VDD	Logic/LCD Drive Voltage	3.0	3.3	3.6	[Volt]	±10%
IDD	VDD Current	-	1	1.2	[A]	Black pattern VDD=Typ.3.3 V, at 60Hz)
Irush	LCD Inrush Current	-	-	3	[A]	Note 1
PDD	VDD Power	-	3.3	3.96	[Watt]	Black pattern VDD=Typ.3.3 V, at 60Hz)

Note 1: Measurement condition:



## 5.1.2 Signal Electrical Characteristics

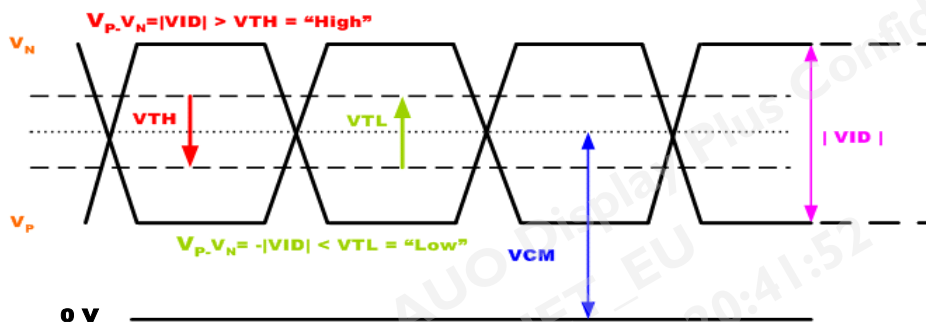
Symbol	Item	Min.	Typ.	Max.	Unit	Remark
$V_{TH}$	Differential Input High Threshold	-	-	+100	[mV]	$V_{CM}=1.2V$
$V_{TL}$	Differential Input Low Threshold	-100	-	-	[mV]	$V_{CM}=1.2V$
$ VID $	Input Differential Voltage	100		600	[mV]	
$V_{ICM}$	Differential Input Common Mode Voltage	1.0	1.2	1.5	[V]	$V_{TH}/V_{TL}=\pm 100mV$

Input signals shall be low or Hi-Z state when VDD is off.

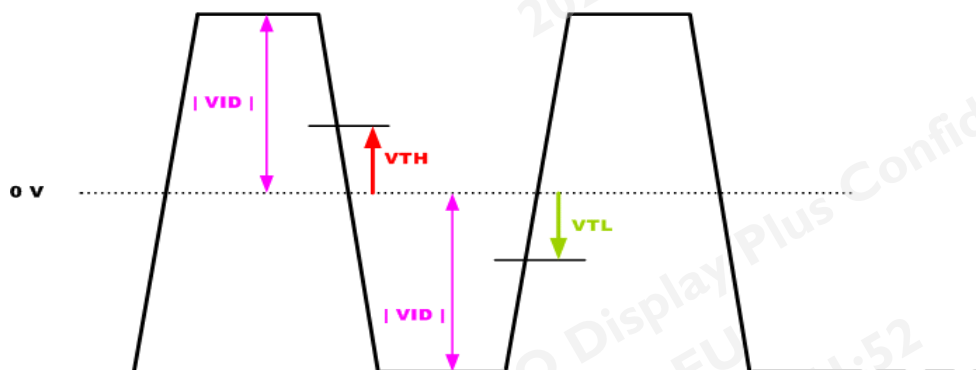
Note: LVDS Signal Waveform.

$V_P - V_N = |VID| > V_{TH} = \text{"High"}$   
 $V_P - V_N = -|VID| < V_{TL} = \text{"Low"}$

### Single-end Signal



### Differential Signal



## 5.2 Backlight Unit

### 5.2.1 Parameter guideline for LED

Following characteristics are measured under stable condition using a LED driving board at 25°C (Room Temperature).

Symbol	Parameter	Min	Typ	Max	Units	Remark
Vcc	Input Voltage	10.8	12	13.2	Volt	
Ivcc	Input Current	-	0.74	0.82	A	100% Dimming
PLED	Power Consumption	-	8.93	9.79	Watt	100% Dimming
Irush	Inrush Current			3	A	
VLED on/off	On Control Voltage	2.5	3.3	5.5	Volt	
	Off Control Voltage			0.7	Volt	
FPWM	PWM Dimming Frequency	200	-	20k	Hz	
	High Voltage	2.5	3.3	5.5	Volt	
	Low Voltage			0.7	Volt	
	Dimming Duty Cycle, 200Hz~5KHz	5	-	100	%	
	Dimming Duty Cycle, 5KHz~20KHz	15	-	100	%	
I <sub>F</sub>	LED Forward Current	-	36		mA	Ta = 25°C
LED Life		50,000		-	Hrs	Ta = 25°C

Note 1: Ta means ambient temperature of TFT-LCD module.

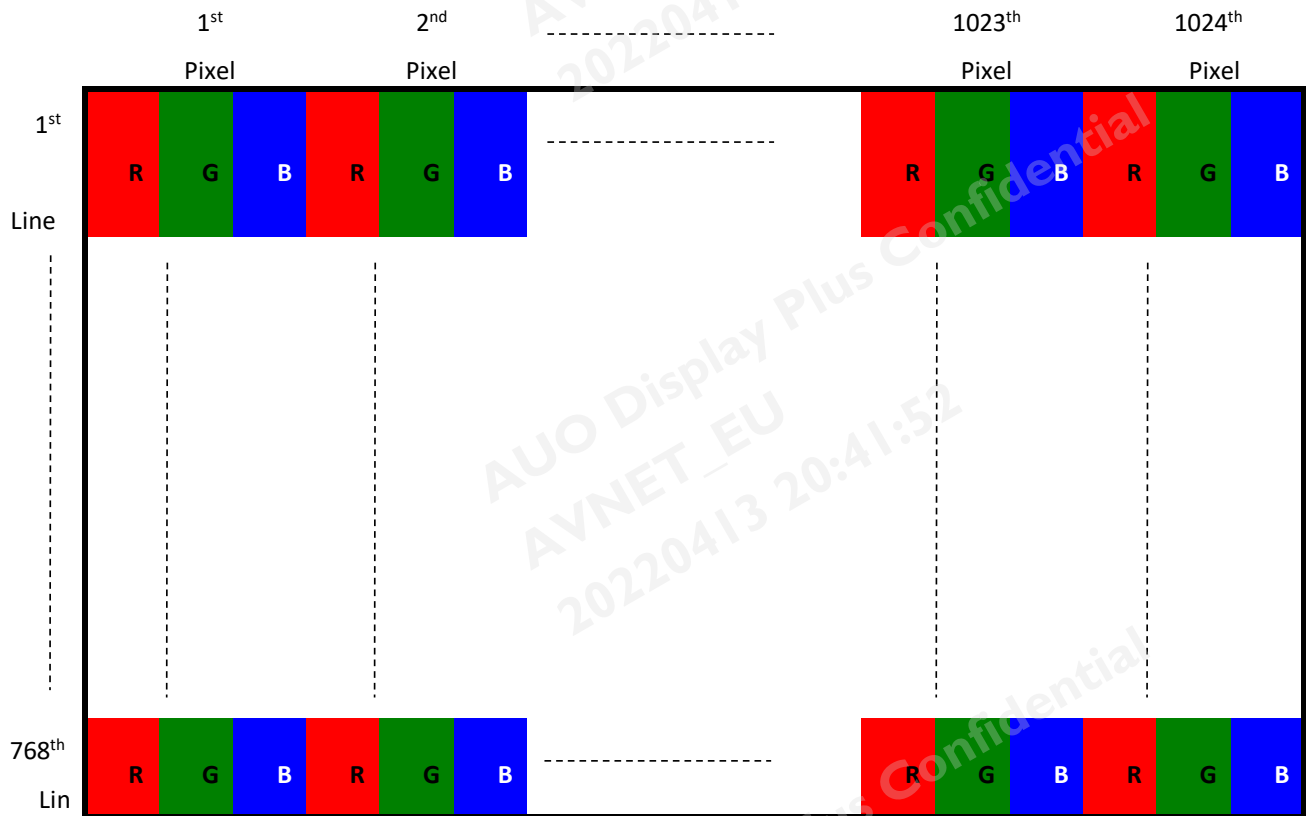
Note 2: If G150XTN06.B module is driven at high ambient temperature & humidity condition. The operating life will be reduced.

Note 3: LED life means brightness goes down to 50% initial brightness. Min. operating life time is estimated data.

## 6. Signal Characteristic

### 6.1 Pixel Format Image

Following figure shows the relationship between input signal and LCD pixel format.



### 6.2 Scanning Direction

The following figures show the image seen from the front view. The arrow indicates the direction of scan.



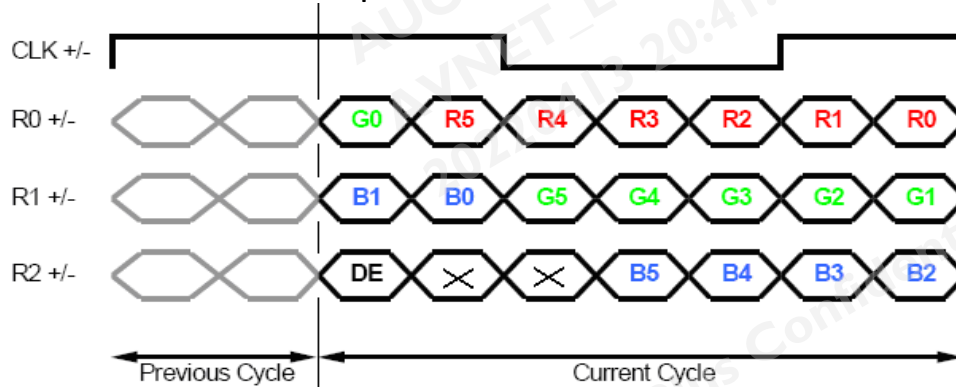
## 6.3 Signal Description

LVDS is a differential signal technology for LCD interface and high speed data transfer device.

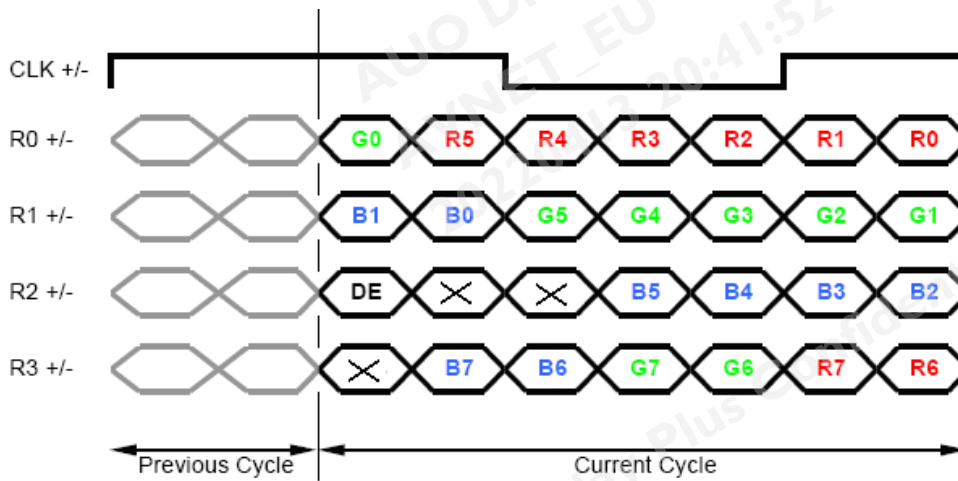
Pin No.	Symbol	Description
1	VDD	Power Supply, 3.3V (typical)
2	VDD	Power Supply, 3.3V (typical)
3	NC	No Connect
4	NC	No Connect
5	Rin0-	- LVDS differential data input
6	Rin0+	+ LVDS differential data input
7	VSS	Ground
8	Rin1-	- LVDS differential data input
9	Rin1+	+ LVDS differential data input
10	VSS	Ground
11	Rin2-	- LVDS differential data input
12	Rin2+	+ LVDS differential data input
13	VSS	Ground
14	ClkIN-	- LVDS differential clock input
15	ClkIN+	+ LVDS differential clock input
16	VSS	Ground
17	Rin3-	- LVDS differential data input
18	Rin3+	+ LVDS differential data input
19	VSS	Ground
20	SEL LVDS	H or NC: 6bit/L: 8bit

## 6.4 The Input Data Format

SEL LVDS = "H" or NC for 6 bits LVDS Input



SEL LVDS = "L" for 8 bits LVDS Input



Note1: Please follow PSWG.

Note2: R/G/B data 7:MSB, R/G/B data 0:LSB



## 6.5 Interface Timing

### 6.5.1 Timing Characteristics

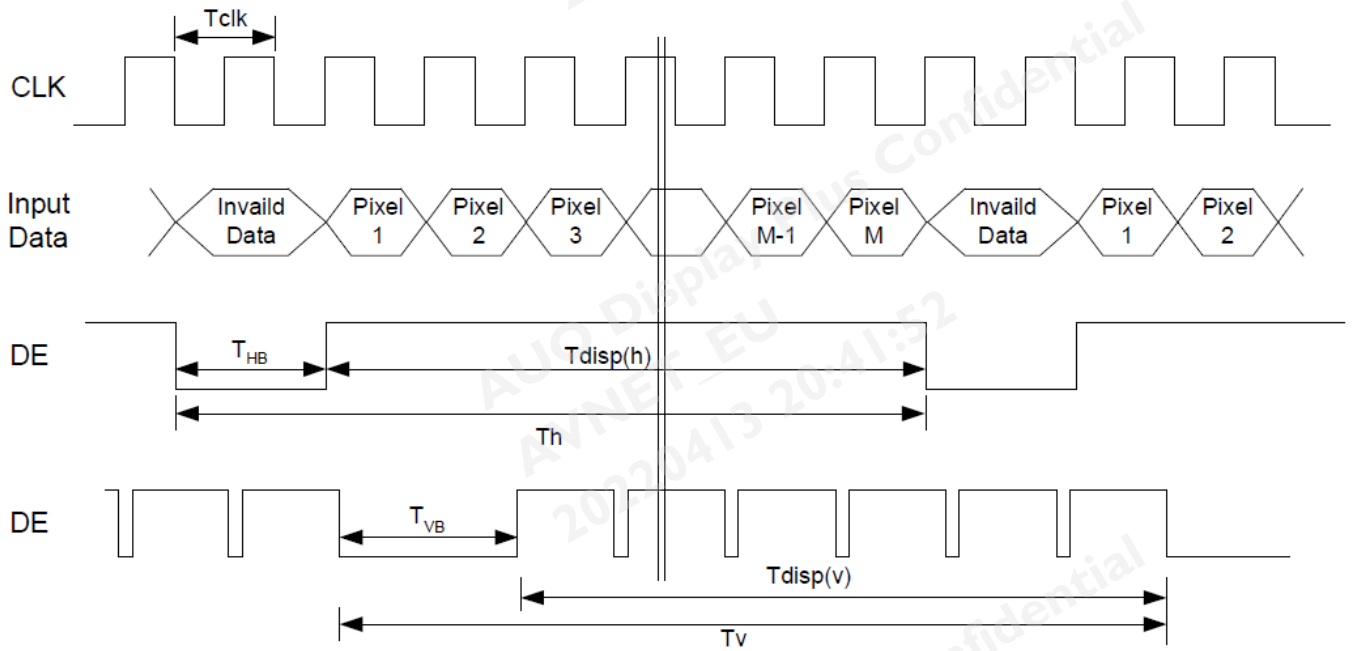
Signal	Parameter		Symbol	Min.	Typ.	Max.	Unit
Clock Timing	Clock frequency		1/ T <sub>Clock</sub>	50	65	81	MHz
Vsync Timing	Vertical Section	Period	T <sub>V</sub>	783	806	968	Vsync Timing
		Active	T <sub>VD</sub>	768	768	768	
		Blanking	T <sub>VB</sub>	15	38	200	
Hsync Timing	Horizontal Section	Period	T <sub>H</sub>	1224	1344	2024	Hsync Timing
		Active	T <sub>HD</sub>	1024	1024	1024	
		Blanking	T <sub>HB</sub>	200	320	1000	
Frame Rate			F		60		Hz

Note: The maximum Frame Rate  $< 81\text{MHz} / [(V\_Period) * (H\_Period)]$

Note: DE mode only.

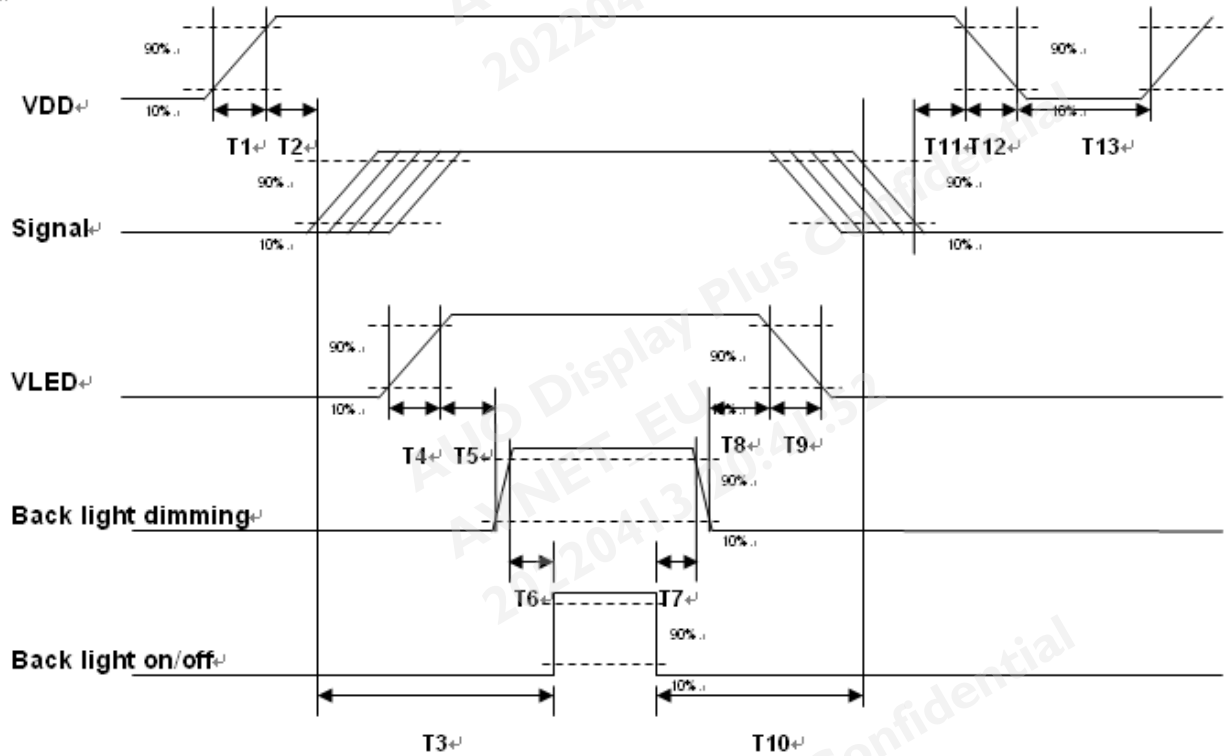
Note : Typical value refer to VESA STANDARD

### 6.5.2 Input Timing Diagram



## 6.6 Power ON/OFF Sequence

VDD power and LED on/off sequence is as below. Interface signals are also shown in the chart. Signals from any system shall be Hi-Z state or low level when VDD is off.



**Power ON/OFF sequence timing**

Parameter	Value			Units
	Min.	Typ.	Max.	
<b>T1</b>	0.5	-	10	[ms]
<b>T2</b>	30	40	50	[ms]
<b>T3</b>	200	-	-	[ms]
<b>T4</b>	0.5	-	10	[ms]
<b>T5</b>	10	-	-	[ms]
<b>T6</b>	10	-	-	[ms]
<b>T7</b>	0	-	-	[ms]
<b>T8</b>	10	-	-	[ms]
<b>T9</b>	-	-	200	[ms]
<b>T10</b>	110	-	-	[ms]
<b>T11</b>	0	16	50	[ms]
<b>T12</b>	-	-	200	[ms]
<b>T13</b>	1000	-	-	[ms]

The above on/off sequence should be applied to avoid abnormal function in the display. Please make sure to turn off the power when you plug the cable into the input connector or pull the cable out of the connector.

## 7. Connector & Pin Assignment

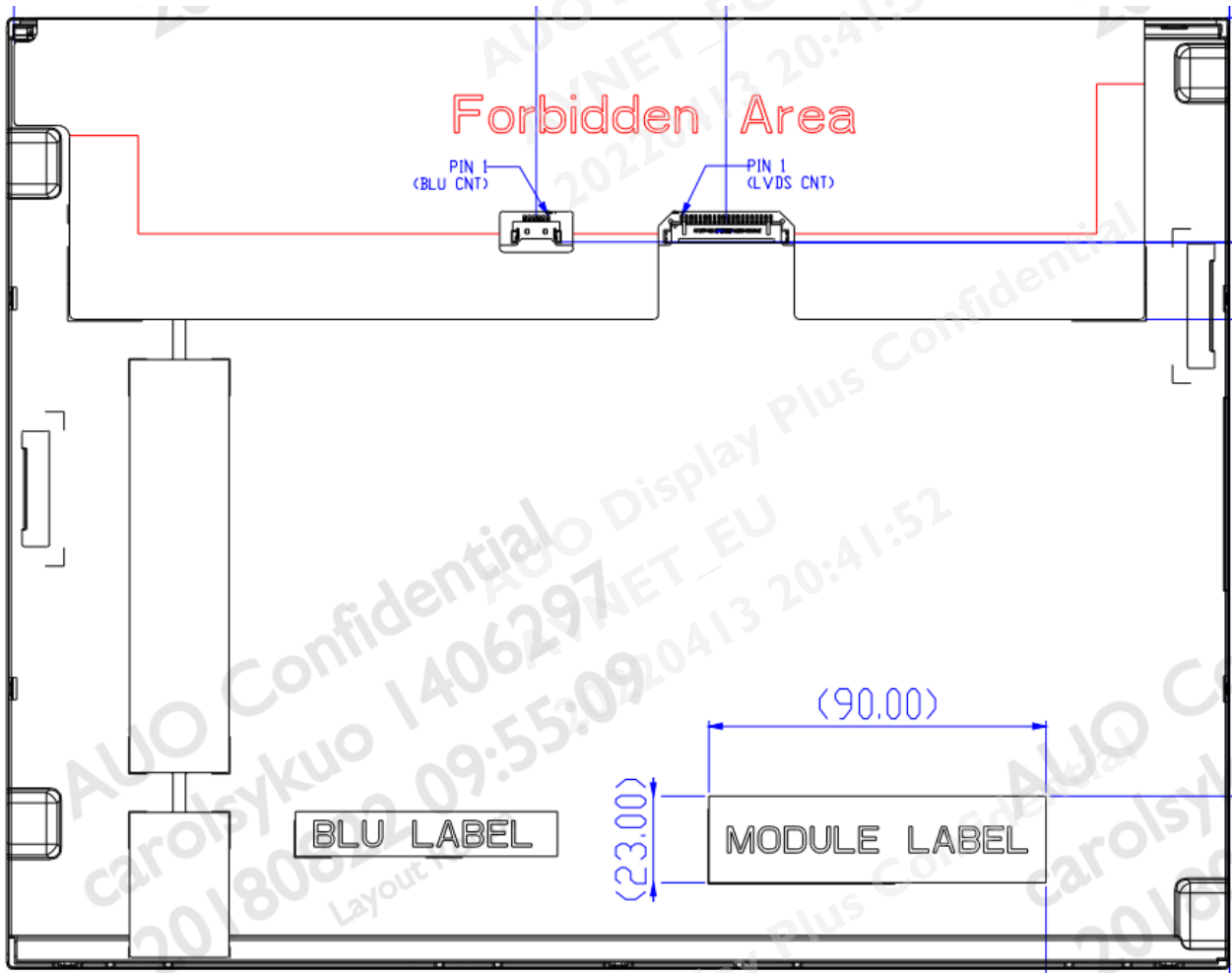
Physical interface is described as for the connector on module. These connectors are capable of accommodating the following signals and will be following components.

### 7.1 TFT LCD Module: LVDS Connector

Connector Name / Designation	Signal Connector
Manufacturer	STM or compatible
Connector Model Number	MSB240420HD or compatible
Mating Model Number	P240420H or compatible

Pin#	Signal Name	Pin#	Signal Name
1	VDD	2	VDD
3	NC	4	NC
5	Rin0-	6	Rin0+
7	VSS	8	Rin1-
9	Rin1+	10	VSS
11	Rin2-	12	Rin2+
13	VSS	14	ClkIN-
15	ClkIN+	16	VSS
17	Rin3-	18	Rin3+
19	VSS	20	SEL68

## 7.1.1 Connector Illustration





## 7.2 Backlight Unit: LED Driver Connector

Connector Name / Designation	LED Driver Connector
Manufacturer	ENTERY or STM or compatible
Connector Model Number	3808K-F06N-12R or MSB24038P6D or compatible
Mating Model Number	H208K-D06N-22B or P24038P6 or compatible

## 7.3 LED Connector Pin Assignment

Pin#	Symbol	Signal Name
1	Vcc	Power Supply (Typ. 12V)
2	Vcc	Power Supply (Typ. 12V)
3	GND	Ground
4	GND	Ground
5	Enable	VLED On/Off
6	Dimming	PWM Dimming

## 8. Reliability Test Criteria

Items	Required Condition	Note
Temperature Humidity Bias	50°C/80%,300 hours	
High Temperature Operation	70°C,300 hours	
Low Temperature Operation	-30°C,300 hours	
Hot Storage	80°C,300 hours	
Cold Storage	-30°C,300 hours	
Thermal Shock Test	-20°C/30 min ,60°C/30 min ,100cycles	
Shock Test (Non-Operating)	50G,20ms,Half-sine wave,( ±X, ±Y, ±Z)	
Vibration Test (Non-Operating)	1.5G, (10~200Hz, P-P) 30 mins/axis (X, Y, Z)	
On/off test	On/10 sec, Off/10 sec, 30,000 cycles	
ESD	Contact Discharge: ± 8KV, 150pF(330Ω ) 1sec, 8 points, 25 times/ point Air Discharge: ± 15KV, 150pF(330Ω ) 1sec, 8 points, 25 times/ point	Note 1

Note1: According to EN61000-4-2, ESD class B: Some performance degradation allowed. No data lost

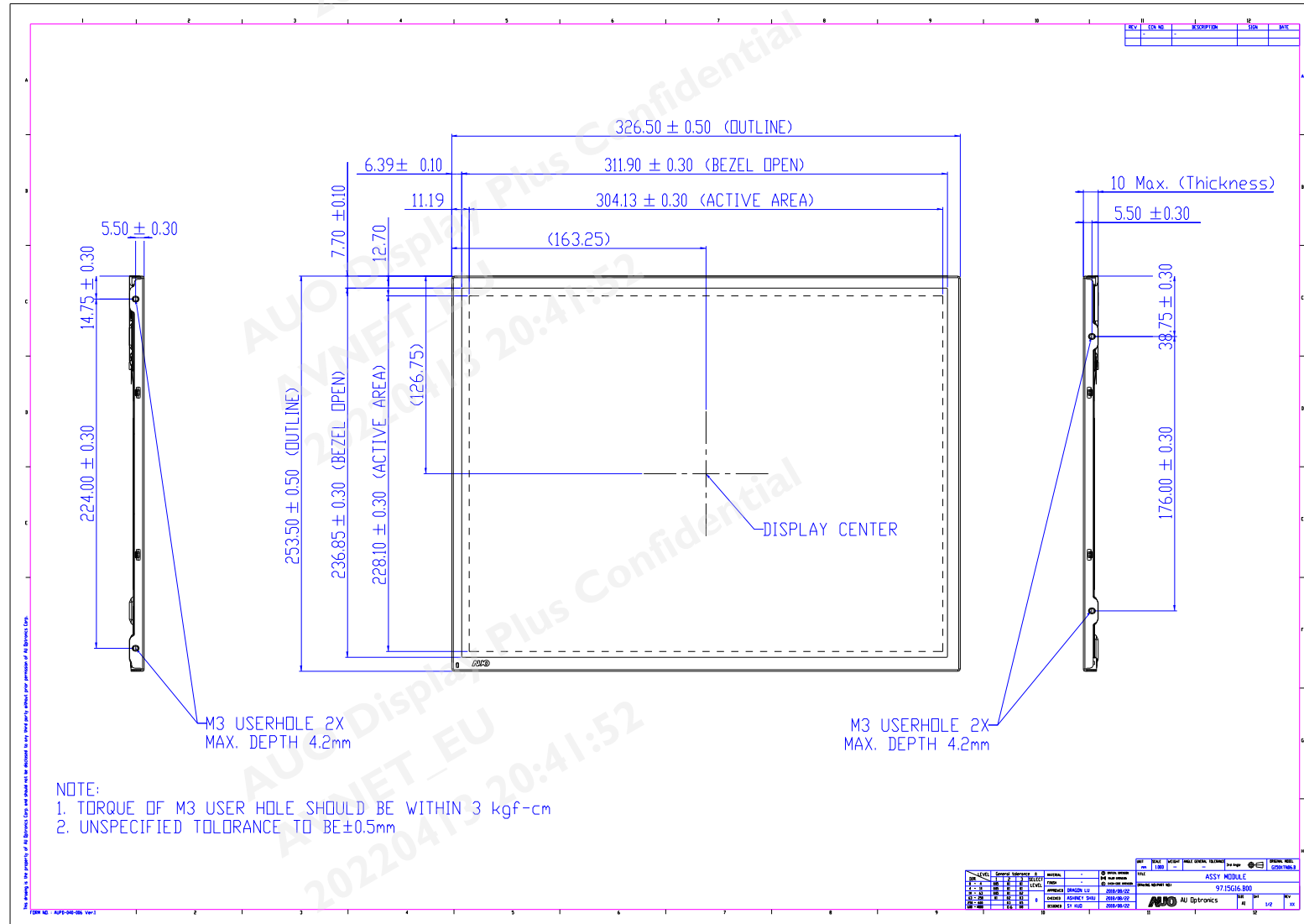
. Self-recoverable. No hardware failures.

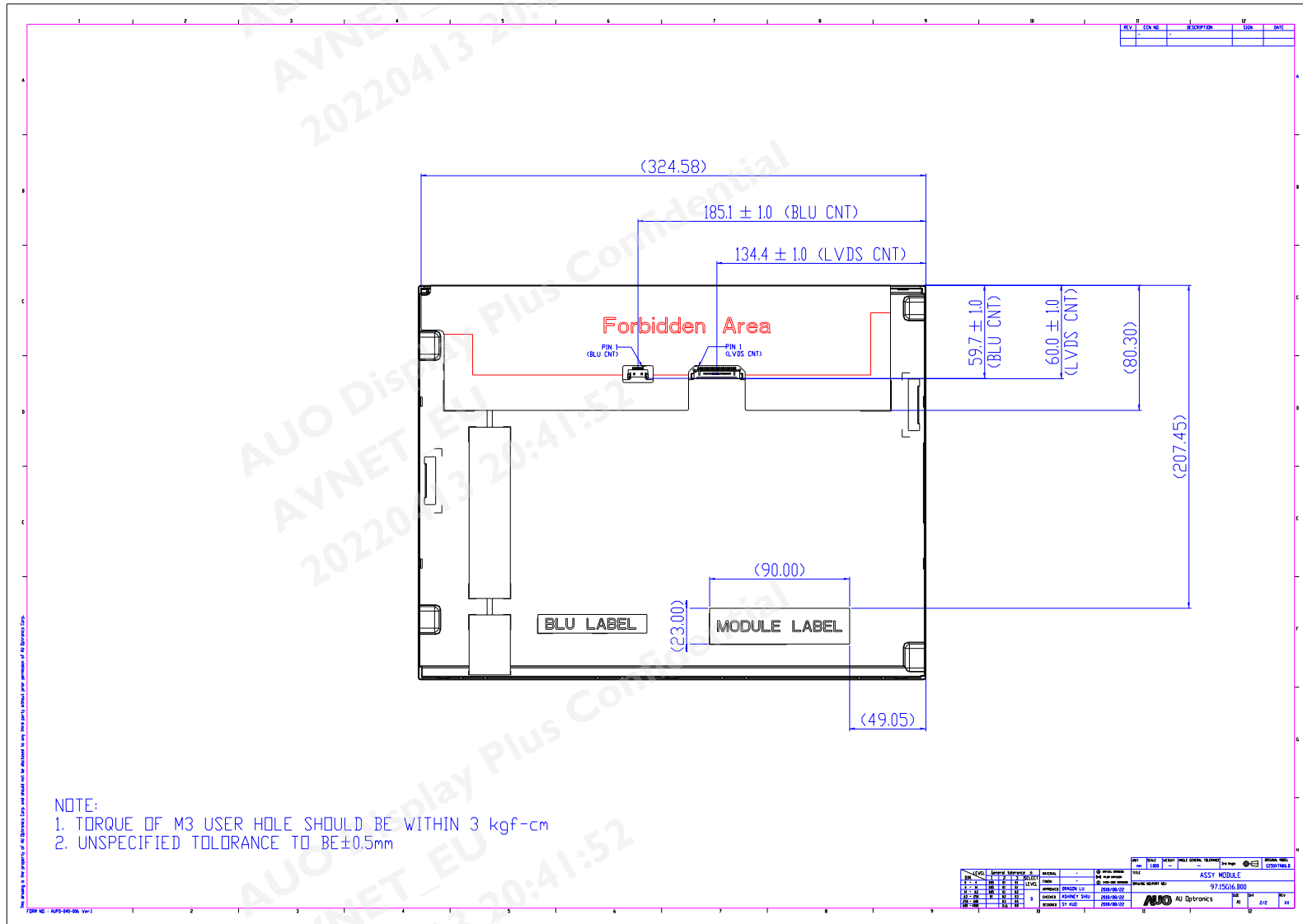
Note 2:

- Water condensation is not allowed for each test items.
- Each test is done by new TFT-LCD module. Don't use the same TFT-LCD module repeatedly for reliability test.
- The reliability test is performed only to examine the TFT-LCD module capability.
- To inspect TFT-LCD module after reliability test, please store it at room temperature and room humidity for 24 hours at least in advance.
- No function failure occurs. Mura shall be ignored after high temperature reliability test

## 9. Mechanical Characteristics

### 9.1 LCM Outline Dimension (Front View and back view)

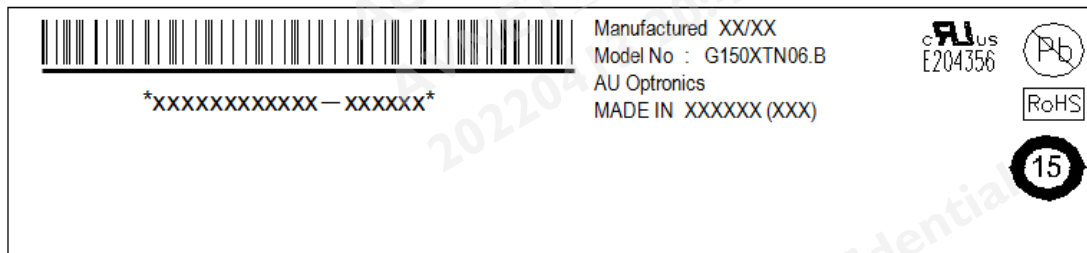






## 10. Label and Packaging

### 10.1 Shipping Label (on the rear side of TFT-LCD display)



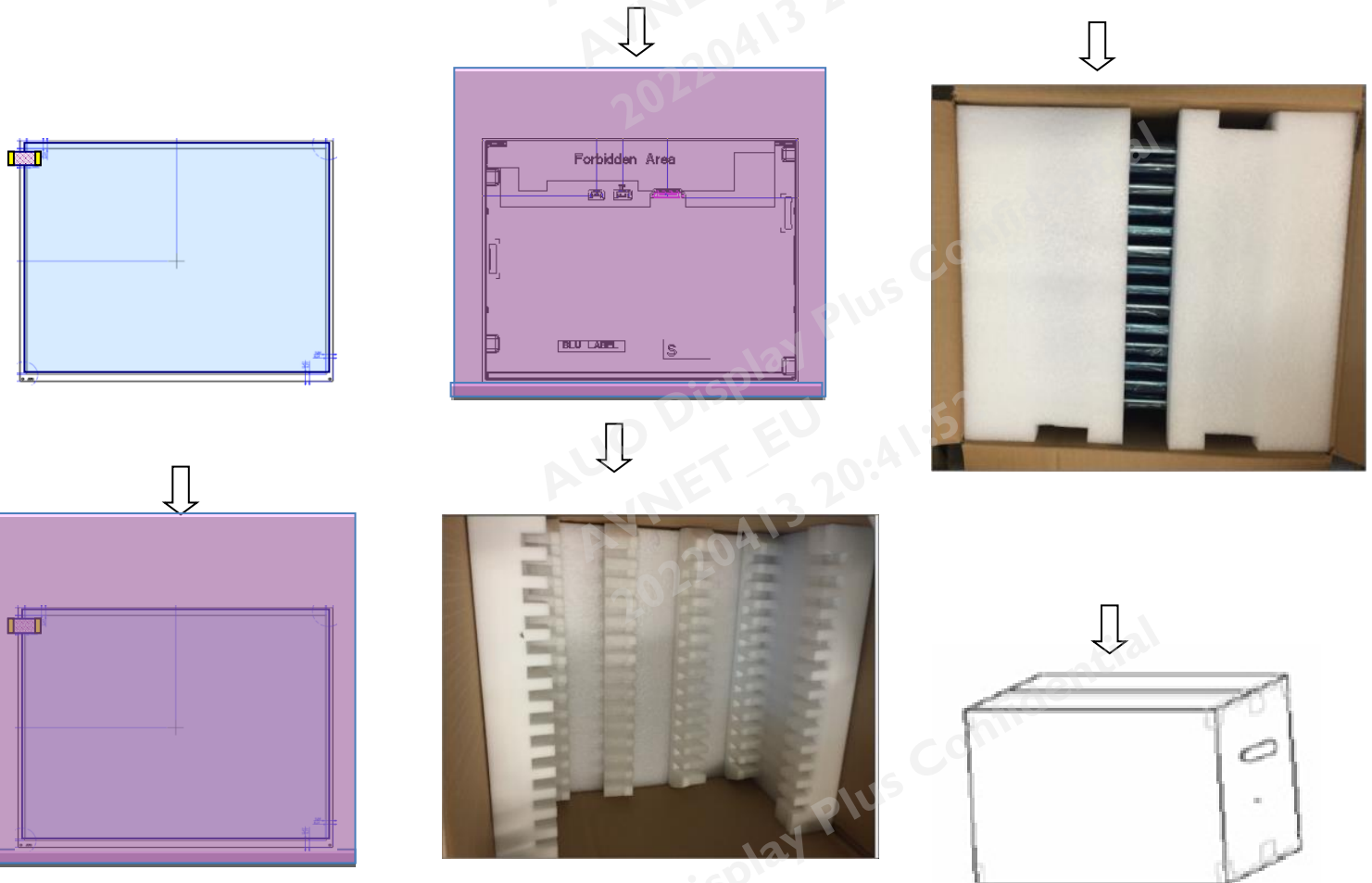
## 10.2 Carton Package

Max capacity : 14 TFT-LCD module per carton

Max weight: 16.5 kg per carton

Outside dimension of carton: 430mm(L)\* 370mm(W)\*350mm(H)

Pallet size : 1150 mm \* 910 mm \* 132mm



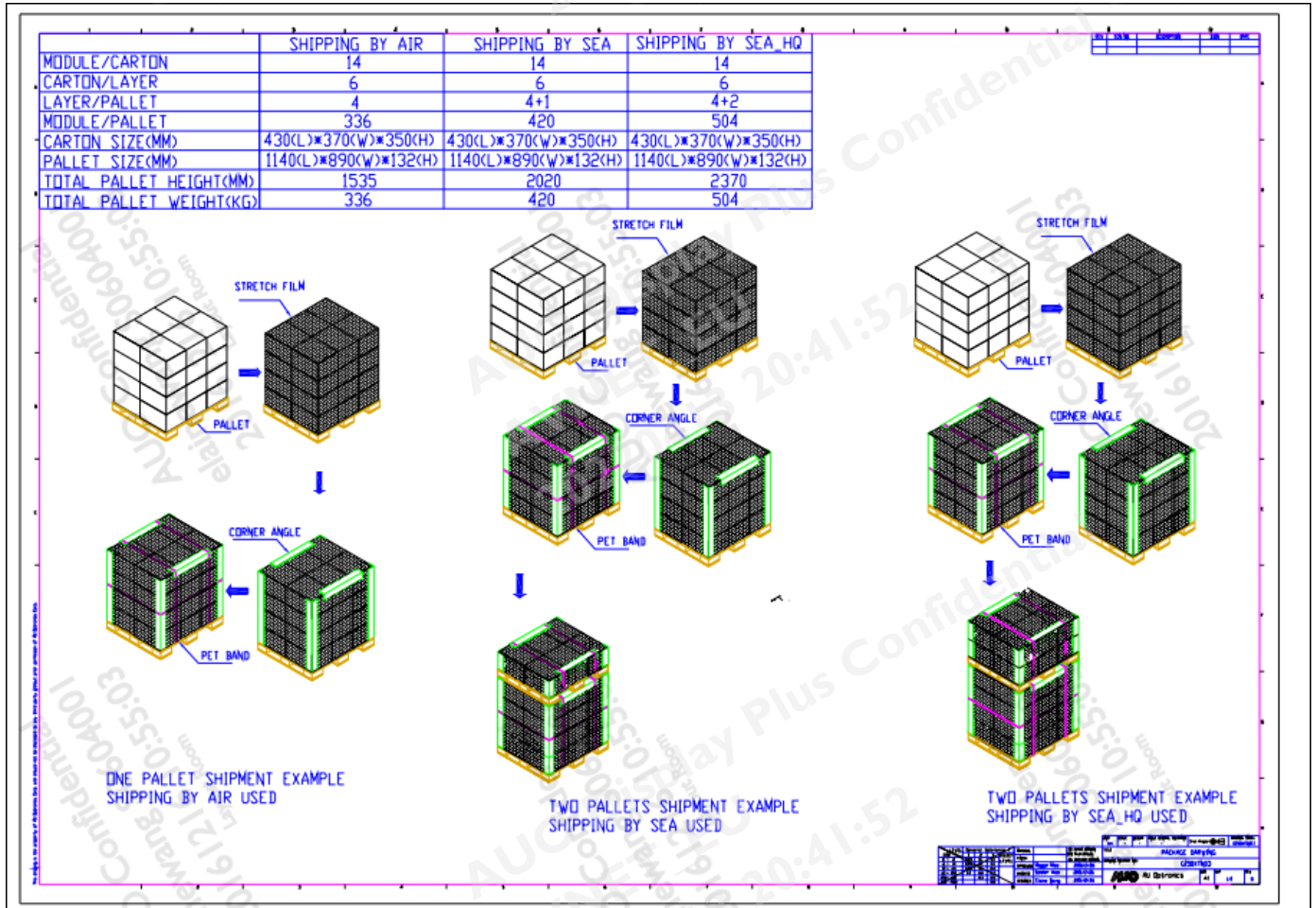
14pcs/Carton

## 10.3 Palletizing

Module by air\_Max: (2 \*3) \*4 layers , one pallet put 24 boxes , total 336pcs module

Module by sea\_Max: (2 \*3) \*4 layers + (2 \*3) \*1 layers , two pallet put 30 boxes , total 420pcs module

Module by sea\_HQ\_Max: (2 \*3) \*4 layers+(2 \*3) \*2 layers, two pallet put 36 boxes, total 504pcs module





## 11 Safety

### 11.1 Sharp Edge Requirements

There will be no sharp edges or comers on the display assembly that could cause injury.

### 11.2 Materials

#### 11.2.1 Toxicity

There will be no carcinogenic materials used anywhere in the display module. If toxic materials are used, they will be reviewed and approved by the responsible AUO toxicologist.

#### 11.2.2 Flammability

All components including electrical components that do not meet the flammability grade UL94-V1 in the module will complete the flammability rating exception approval process.

The printed circuit board will be made from material rated 94-V1 or better. The actual UL flammability rating will be printed on the printed circuit board.

### 11.3 Capacitors

If any polarized capacitors are used in the display assembly, provisions will be made to keep them from being inserted backwards.

### 11.4 National Test Lab Requirement

The display module will satisfy all requirements for compliance to:

UL 60950-1, Second Edition

U.S.A. Information Technology Equipment